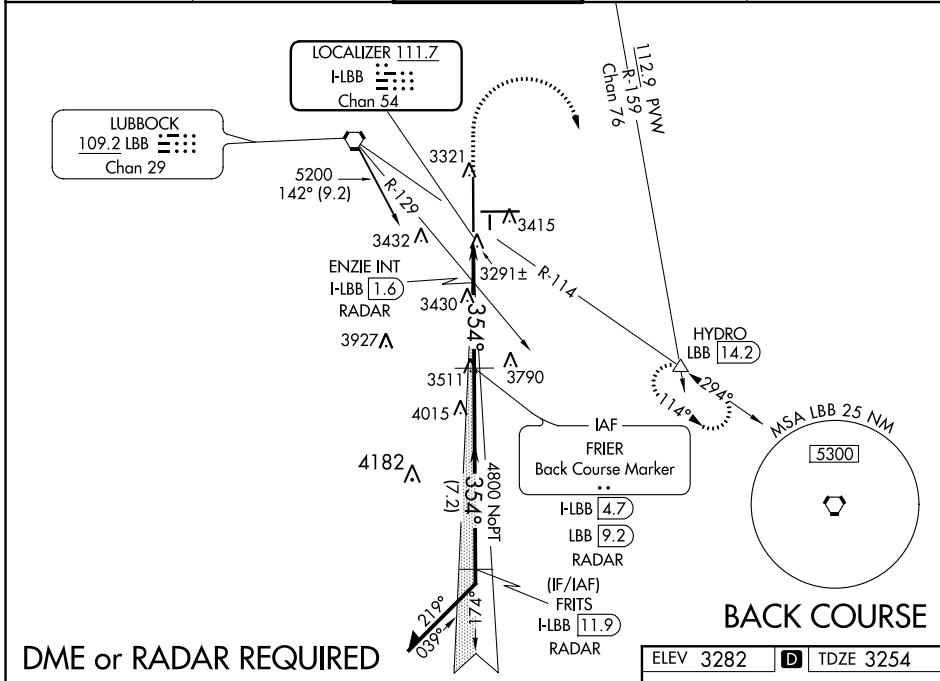


LOC I-LBB <b>111.7</b> Chan 54	APP CRS <b>354°</b>	Rwy Idg <b>11500</b> TDZE <b>3254</b> Apt Elev <b>3282</b>
--------------------------------------	------------------------	--

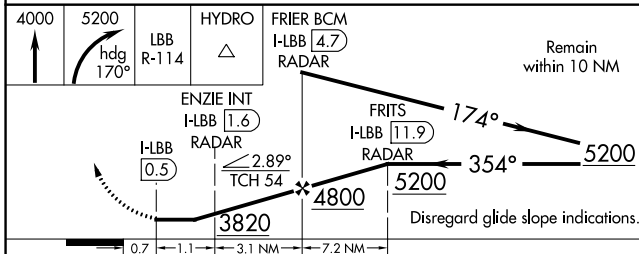
**LOC BC RWY 35L**  
LUBBOCK PRESTON SMITH INTL (LBB)

**MISSED APPROACH:** Climb to 4000 then climbing right turn to 5200 on heading 170° and on LBB VORTAC R-114 to HYDRO INT/LBB 14.2 DME and hold.

ATIS <b>125.3 270.275</b>	LUBBOCK APP CON <b>119.2 351.8</b>	LUBBOCK TOWER <b>120.5 239.3</b>	GND CON <b>121.9 348.6</b>	CLNC DEL <b>125.8 281.55</b>
------------------------------	---------------------------------------	-------------------------------------	-------------------------------	---------------------------------

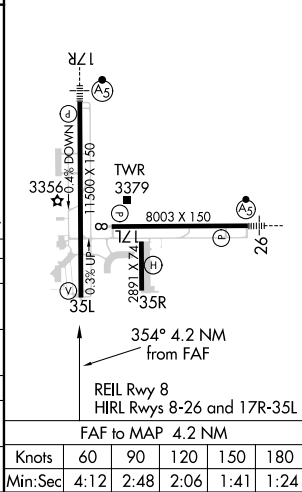


**DME or RADAR REQUIRED**



CATEGORY	A	B	C	D
S-35L	3820-1	566 (600-1)	3820-1½	566 (600-1½)
<b>C</b> CIRCLING	3820-1	538 (600-1)	3880-1½	3940-2
			598 (600-1½)	658 (600-2)
<b>ENZIE FIX MINIMUMS</b>				
S-35L	3560-1	306 (300-1)	3560-7/8	306 (300-7/8)
<b>C</b> CIRCLING	3720-1	3740-1	3880-1½	3940-2
	438 (500-1)	458 (500-1)	598 (600-1½)	658 (700-2)

ELEV 3282	<b>D</b> TDZE 3254
-----------	--------------------



F knots	60	90	120	150	180
Min:Sec	4:12	2:48	2:06	1:41	1:24