

LUBBOCK, TEXAS

# HI-VOR or TACAN Z RWY 26

VORTAC LBB <b>109.2</b> Chan <b>29</b>	APCH CRS <b>282°</b>	Rwy Idg TDZE Arpt Elev <b>8003</b> <b>3255</b> <b>3282</b>
--	-------------------------	---

LUBBOCK PRESTON SMITH INTL (KLBB)

DME required. RADAR required for entry at CIRKI.

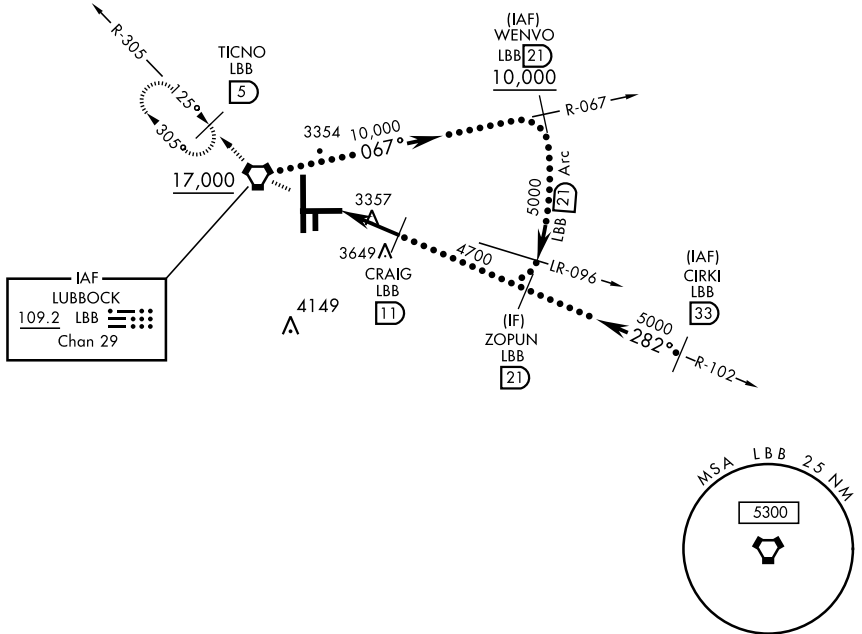
▼ \* When ALS inop, increase CAT E vis to 1¼.



MISSED APPROACH: Climb and maintain 5100 direct LBB VORTAC and via LBB R-305 to TICNO (LBB 5 DME) and hold.

ATIS <b>125.3 270.275</b>	LUBBOCK APP CON <b>119.2 351.8</b>	LUBBOCK TOWER <b>120.5 239.3</b>	GND CON <b>121.9 348.6</b>	CLNC DEL <b>125.8 281.55</b>
------------------------------	---------------------------------------	-------------------------------------	-------------------------------	---------------------------------

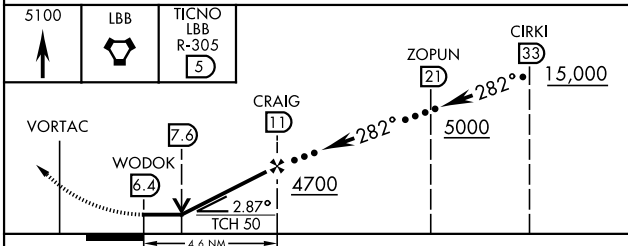
Procedure NA for arrival on LBB VORTAC airway R-052 CW R-114.



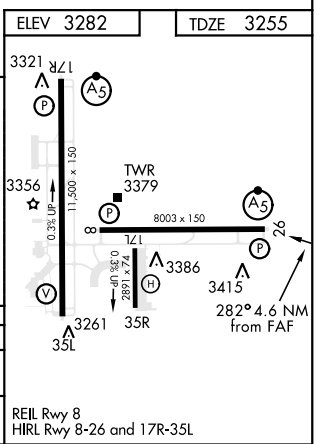
SC-2, 25 MAR 2021 to 22 APR 2021

SC-2, 25 MAR 2021 to 22 APR 2021

EMERG SAFE ALT 100 NM 7300



CATEGORY	C	D	E
S-26 *	3680/40	424	(400-¾)
CIRCLING	3880-1½ 598 (600-1½)	3940-2 658 (700-2)	4100-3 818 (900-3)



LUBBOCK, TEXAS

33°40'N-101°49'W

LUBBOCK PRESTON SMITH INTL (KLBB)

Amdt 1A 25MAR21

# HI-VOR or TACAN Z RWY 26