

LUBBOCK, TEXAS

HI-LOC/DME BC RWY 35L

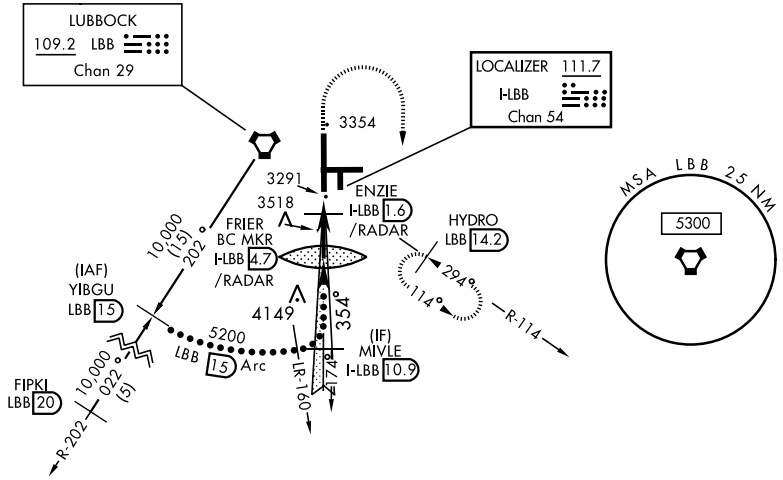
LOC I-LBB 111.7 Chan 54	APCH CRS 354°	Rwy Idg 11,500 TDZE 3254 Arprt Elev 3282
---	-------------------------	---

JAL-241 [USAF]

LUBBOCK PRESTON SMITH INTL (KLBB)

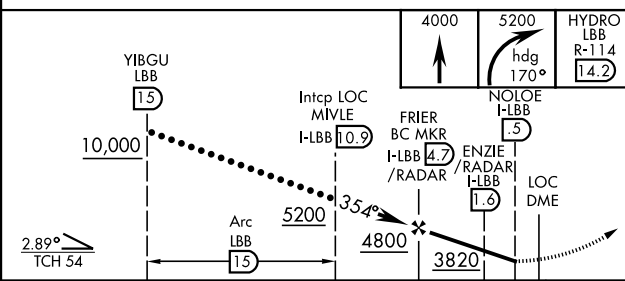
V Use I-LBB DME when on Localizer course.
A MISSED APPROACH: Climb to 4000, then climbing right turn to 5200 on Hdg 170° and on LBB VORTAC R-114 to HYDRO INT/LBB 14.2 DME and hold.

ATIS 125.3 270.275	LUBBOCK APP CON 119.2 351.8	LUBBOCK TOWER 120.5 239.3	GND CON 121.9 348.6	CLNC DEL 125.8 281.55
------------------------------	---------------------------------------	-------------------------------------	-------------------------------	---------------------------------



BACKCOURSE

EMERG SAFE ALT 100 NM 7300



ELEV 3282	TDZE 3254
REIL Rwy 8 HIRL Rwy 8-26 and 17R-35L	
Knots	120 150 160 180 200
Min:Sec	2:06 1:41 1:35 1:24 1:16

CATEGORY	C	D	E
S-35L	3560-7/8	306 (300-7/8)	
CIRCLING	3880-1 1/2 598 (600-1 1/2)	3940-2 658 (700-2)	4100-3 818 (900-3)

LUBBOCK, TEXAS
Orig C 21MAY20

33°40'N-101°49'W

LUBBOCK PRESTON SMITH INTL (KLBB)

HI-LOC/DME BC RWY 35L

SC-2, 25 MAR 2021 to 22 APR 2021

SC-2, 25 MAR 2021 to 22 APR 2021