

LUBBOCK, TEXAS

# HI-ILS or LOC RWY 17R

LOC I-LBB <b>111.7</b> Chan <b>54</b>	APCH CRS <b>174°</b>	Rwy Ildg <b>11,500</b> TDZE <b>3282</b> Arpt Elev <b>3282</b>
---	-------------------------	---

JAL-241 [USAF]

LUBBOCK PRESTON SMITH INTL (KLBB)

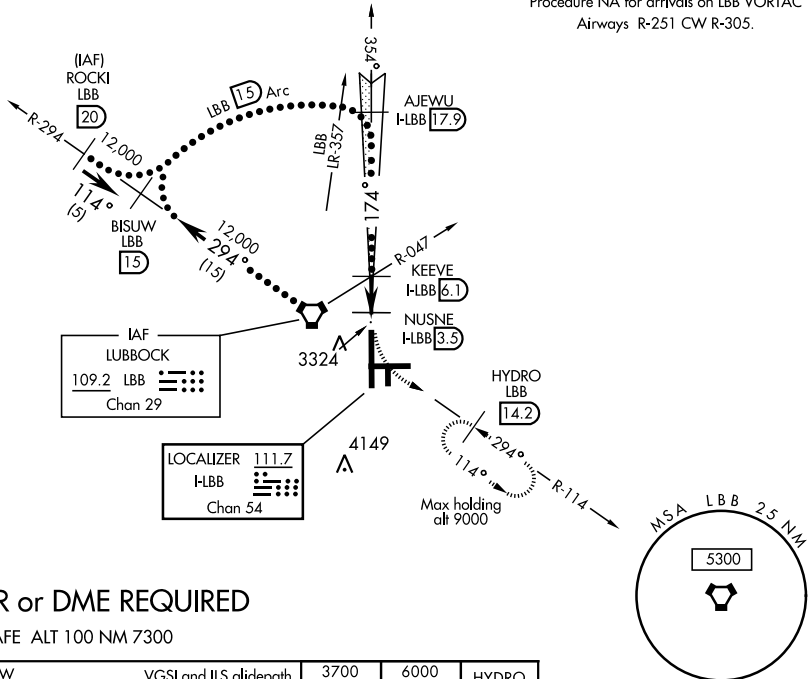
- ▼ \* When ALS inop, increase CAT E RVR to 40.
- \*\* When ALS inop, increase CAT CDE vis to 1 3/8 mile.
- ▲\*\*\* When ALS inop, increase CAT CDE RVR to 50.



MISSED APPROACH: Climb to 3700, then climbing left turn to 6000 via LBB VORTAC R-114 to HYDRO (LBB 14.2 DME) and hold, continue climb in hold to 6000.

ATIS <b>125.3 270.275</b>	LUBBOCK APP CON <b>119.2 351.8</b>	LUBBOCK TOWER <b>120.5 239.3</b>	GND CON <b>121.9 348.6</b>	CLNC DEL <b>125.8 281.55</b>
------------------------------	---------------------------------------	-------------------------------------	-------------------------------	---------------------------------

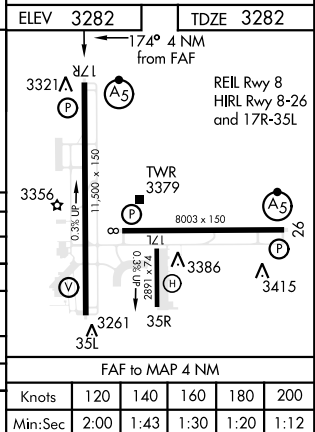
Procedure NA for arrivals on LBB VORTAC  
Airways R-251 CW R-305.



## RADAR or DME REQUIRED

EMERG SAFE ALT 100 NM 7300

BISUW LBB (15)	AJEWU H-LBB (17.9)	VGSI and ILS glidepath not coincident (VGSI angle 3.0/TCH69)	3700	6000	HYDRO LBB (14.2)
12,000	6000	KEEVE LBB R-047 I-LBB (6.1)	4600	LOC only	
GS 3.00° TCH 53	LBB Arc (15)	NUSNE H-LBB (3.5)	3780	H-LBB (3)	H-LBB (2.1)
CATEGORY		C	D	E	
S-ILS 17R *		3482/24 200 (200-1/2)			
S-LOC 17R **		3780/50 498 (500-1)			
CIRCLING	3880-1 1/2	3940-2		4100-3	
	598 (600-1 1/2)	658 (700-2)		818 (900-3)	
NUSNE DME FIX MINIMUMS					
S-LOC 17R ***		3620/26 338 (400-3/4)			
CIRCLING	3880-1 1/2	3940-2		4100-3	
	598 (600-1 1/2)	658 (700-2)		818 (900-3)	



LUBBOCK, TEXAS  
Amdt 2 02FEB17

33°40'N-101°49'W

LUBBOCK PRESTON SMITH INTL (KLBB)

# HI-ILS or LOC RWY 17R

SC-2, 25 MAR 2021 to 22 APR 2021

SC-2, 25 MAR 2021 to 22 APR 2021