

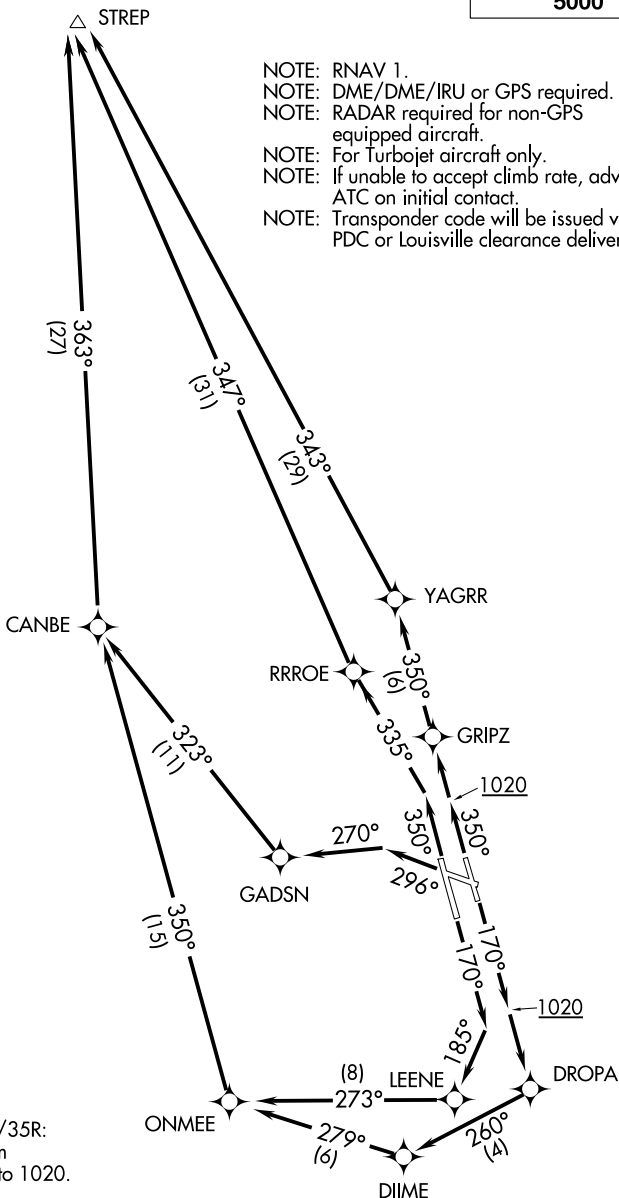
# STREP FIVE DEPARTURE (RNAV)

LOUISVILLE, KENTUCKY

D-ATIS 118.725  
 CLINC DEL  
 126.1 275.8  
 CPDLC  
 GND CON  
 121.7 348.6  
 LOUISVILLE TOWER  
 124.2 257.8  
 LOUISVILLE DEP CON  
 132.075 327.0

**TOP ALTITUDE:  
 5000**

- NOTE: RNAV 1.
- NOTE: DME/DME/IRU or GPS required.
- NOTE: RADAR required for non-GPS equipped aircraft.
- NOTE: For Turbojet aircraft only.
- NOTE: If unable to accept climb rate, advise ATC on initial contact.
- NOTE: Transponder code will be issued via PDC or Louisville clearance delivery.



**TAKEOFF MINIMUMS:**  
 Rwy 11: NA-ATC.  
 Rwys 17L/17R, 29, 35L/35R:  
 Standard with minimum  
 climb of 500' per NM to 1020.

(NARRATIVE ON FOLLOWING PAGE)

NOTE: Chart not to scale.

# STREP FIVE DEPARTURE (RNAV)

LOUISVILLE, KENTUCKY

SE-1, 25 MAR 2021 to 22 APR 2021

SE-1, 25 MAR 2021 to 22 APR 2021