

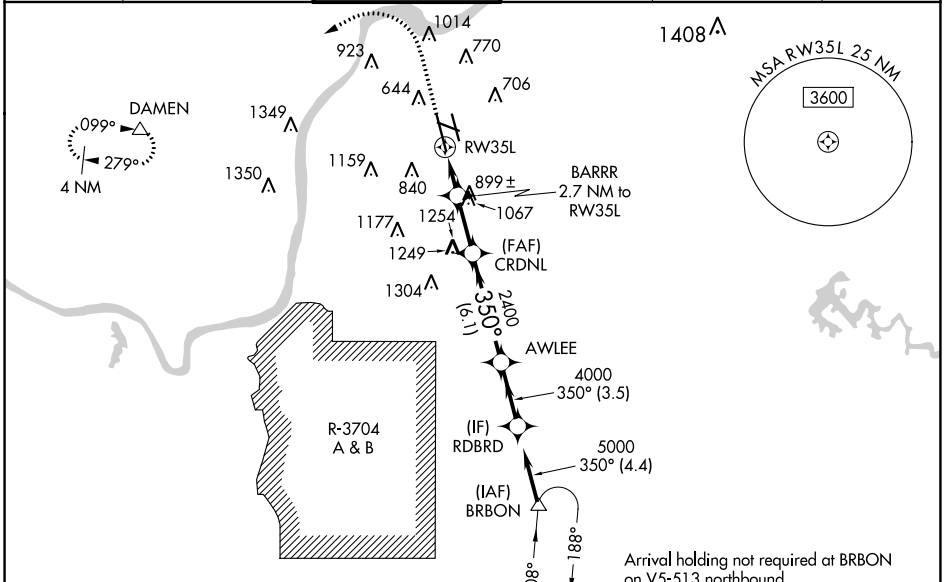
WAAS CH <b>86203</b> <b>W35A</b>	APP CRS <b>350°</b>	Rwy Idg <b>10000</b> TDZE <b>464</b> Apt Elev <b>501</b>
--	------------------------	--

# RNAV (GPS) Y RWY 35L

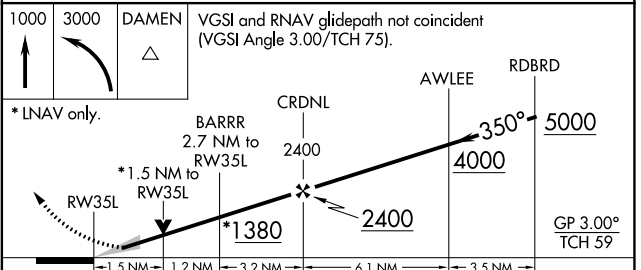
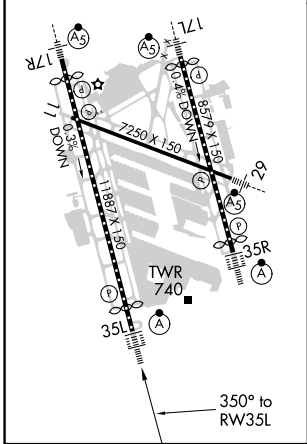
LOUISVILLE MUHAMMAD ALI INTL (SDF)

<p>RNP APCH.</p> <p><b>⚠</b> Circling Rwy 11 NA at night. Simultaneous approach authorized. LNAV procedure NA during simultaneous operations. Use of FD or AP required during simultaneous operations. For uncompensated Baro-VNAV systems, LNAV/VNAV NA below -14°C or above 54°C. For inop ALS, increase LNAV Cats C/D visibility to 1½ SM.</p>	<p>ALS F-2</p>	<p>MISSED APPROACH: Climb to 1000 then climbing left turn to 3000 direct DAMEN and hold.</p>
	<p><b>Ⓜ</b></p>	

D-ATIS <b>118.725</b>	LOUISVILLE APP CON <b>132.075 327.0</b>	LOUISVILLE TOWER <b>124.2 257.8</b>	GND CON <b>121.7 348.6</b>	CLNC DEL <b>126.1 275.8</b>	CPDLC
--------------------------	--	--	-------------------------------	--------------------------------	-------



ELEV <b>501</b>	<b>D</b>	TDZE <b>464</b>
HIRL all Rwys TDZ/CL Rwys 17L, 17R, 35L, and 35R		



CATEGORY	A	B	C	D
LPV DA	664/18	200 (200-½)		
LNAV/VNAV DA	904/50	440 (500-1)		
LNAV MDA	1000/24	536 (500-½)	1000/55	536 (500-1)
<b>C</b> CIRCLING	1040-1 539 (600-1)	1140-1 639 (700-1)	1160-1½ 659 (700-1½)	1400-3 899 (900-3)

SE-1, 25 MAR 2021 to 22 APR 2021

SE-1, 25 MAR 2021 to 22 APR 2021