

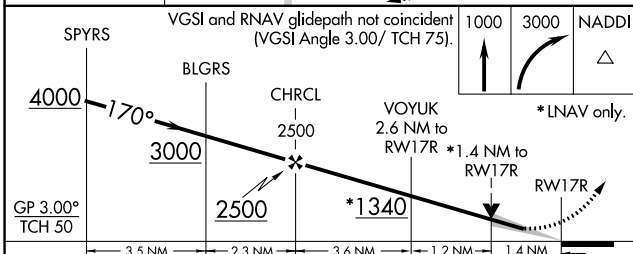
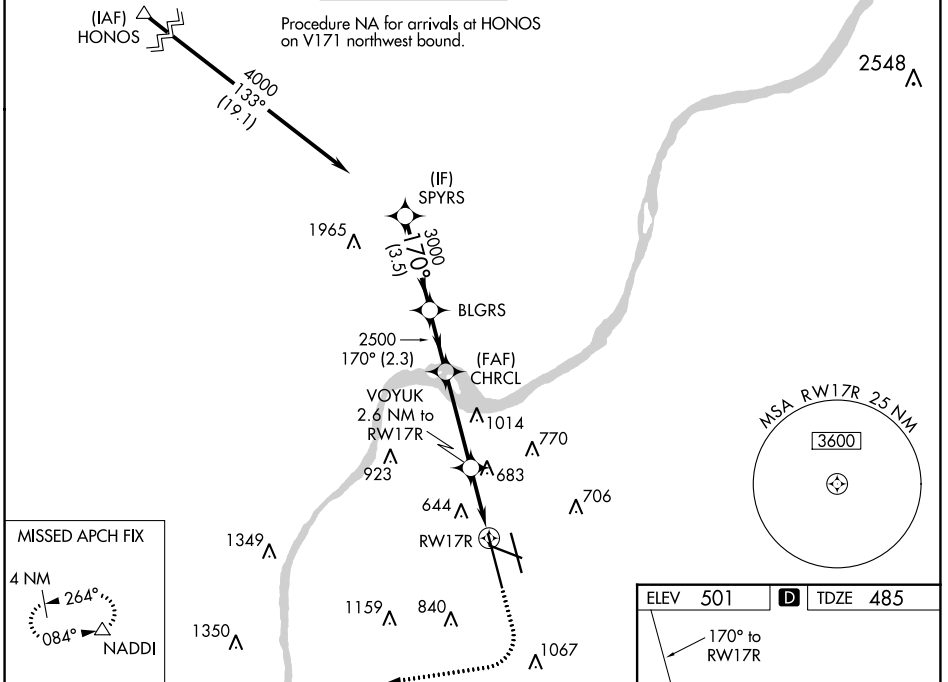
WAAS CH <b>57909</b> <b>W17A</b>	APP CRS <b>170°</b>	Rwy ldg <b>10000</b> TDZE <b>485</b> Apt Elev <b>501</b>
----------------------------------------	------------------------	----------------------------------------------------------------

# RNAV (GPS) Y RWY 17R

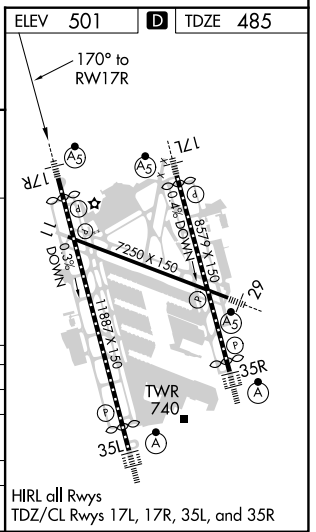
LOUISVILLE MUHAMMAD ALI INTL (SDF)

RNP APCH.	MALSRL	MISSED APPROACH: Climb to 1000 then climbing right turn to 3000 direct NADDI and hold.
Circling Rwy 11 NA at night. Simultaneous approach authorized. LNAV procedure NA during simultaneous operations. For uncompensated Baro-VNAV systems, LNAV/VNAV NA below -14°C or above 54°C. Use of FD or AP required during simultaneous operations. For inop ALS, increase LNAV Cats C/D visibility to 1½ SM.		

D-ATIS <b>118.725</b>	LOUISVILLE APP CON <b>132.075 327.0</b>	LOUISVILLE TOWER <b>124.2 257.8</b>	GND CON <b>121.7 348.6</b>	CLNC DEL <b>126.1 275.8</b>	CPDLC
--------------------------	--------------------------------------------	----------------------------------------	-------------------------------	--------------------------------	-------



SPYRS	BLGRS	CHRCL	VOYUK	RWY 17R
4000	3000	2500	1340	
GP 3.00° TCH 50				
3.5 NM	2.3 NM	3.6 NM	1.2 NM	1.4 NM
CATEGORY	A	B	C	D
LPV DA		685/18	200 (200-½)	
LNAV/VNAV DA		932/55	447 (500-1)	
LNAV MDA	1000/24	515 (500-½)	1000/55	515 (500-1)
CIRCLING	1040-1 539 (600-1)	1140-1 639 (700-1)	1160-1¾ 659 (700-1¾)	1400-3 899 (900-3)



SE-1, 25 MAR 2021 to 22 APR 2021

SE-1, 25 MAR 2021 to 22 APR 2021