

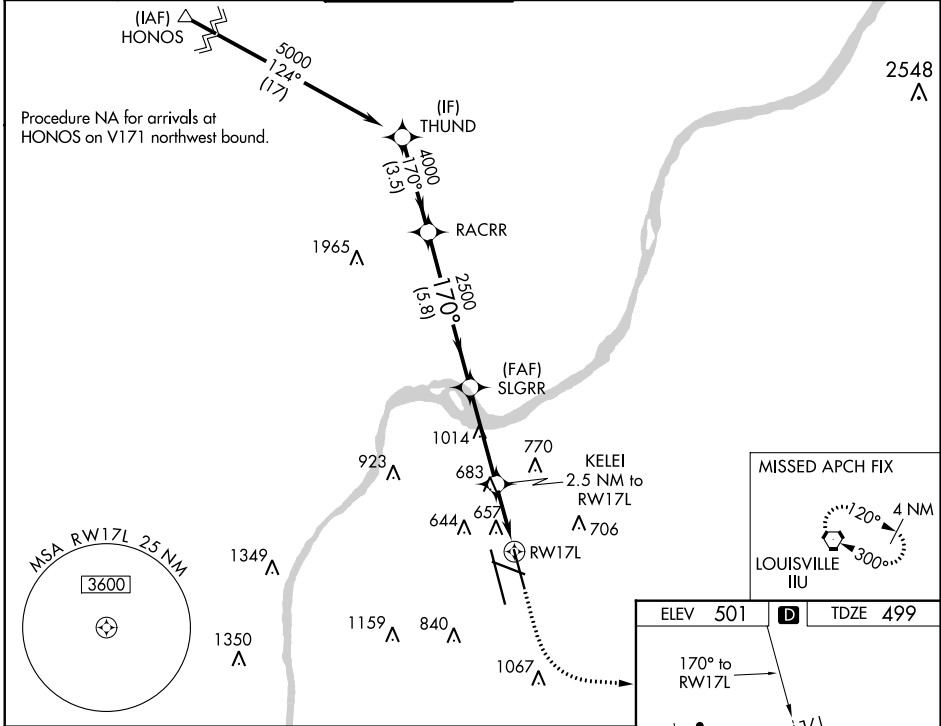
WAAS CH 90101 W17B	APP CRS 170°	Rwy Idg TDZE Apt Elev	7800 499 501
----------------------------------------	------------------------	-----------------------------	-----------------------------------------

RNAV (GPS) Y RWY 17L

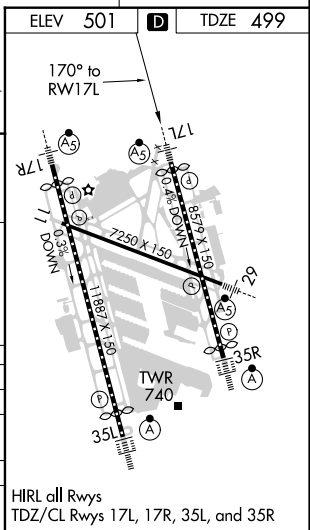
LOUISVILLE MUHAMMAD ALI INTL (SDF)

RNP APCH.	MALSR 	MISSED APPROACH: Climb to 1000 then climbing left turn to 3000 direct IIL VORTAC and hold, continue climb-in-hold to 3000.
Circling Rwy 11 NA at night. Simultaneous approach authorized. For uncompensated Baro-VNAV systems, LNAV/VNAV NA below -14°C or above 54°C. LNAV procedure NA during simultaneous operations. Use of FD or AP required during simultaneous operations.		

D-ATIS 118.725	LOUISVILLE APP CON 132.075 327.0	LOUISVILLE TOWER 124.2 257.8	GND CON 121.7 348.6	CLNC DEL 126.1 275.8	CPDLC
--------------------------	--------------------------------------------	----------------------------------------	-------------------------------	--------------------------------	-------



THUND	RACRR	SLGRR	KELEI	1000	3000	IIL
5000	4000	2500	2.5 NM to RWY 17L	↑	↶	
GP 3.00° TCH 55	170°	*1320	*1 NM to RWY 17L			
3.5 NM		5.8 NM	3.6 NM	1.5 NM	1 NM	
CATEGORY	A	B	C	D		
LPV DA		699/18	200 (200-½)			
LNAV/VNAV DA		818/24	319 (400-½)			
LNAV MDA	920/24	421 (500-½)	920/40	421 (500-¾)		
CIRCLING	1040-1 539 (600-1)	1140-1 639 (700-1)	1160-1¾ 659 (700-1¾)	1400-3 899 (900-3)		



SE-1, 25 MAR 2021 to 22 APR 2021

SE-1, 25 MAR 2021 to 22 APR 2021