

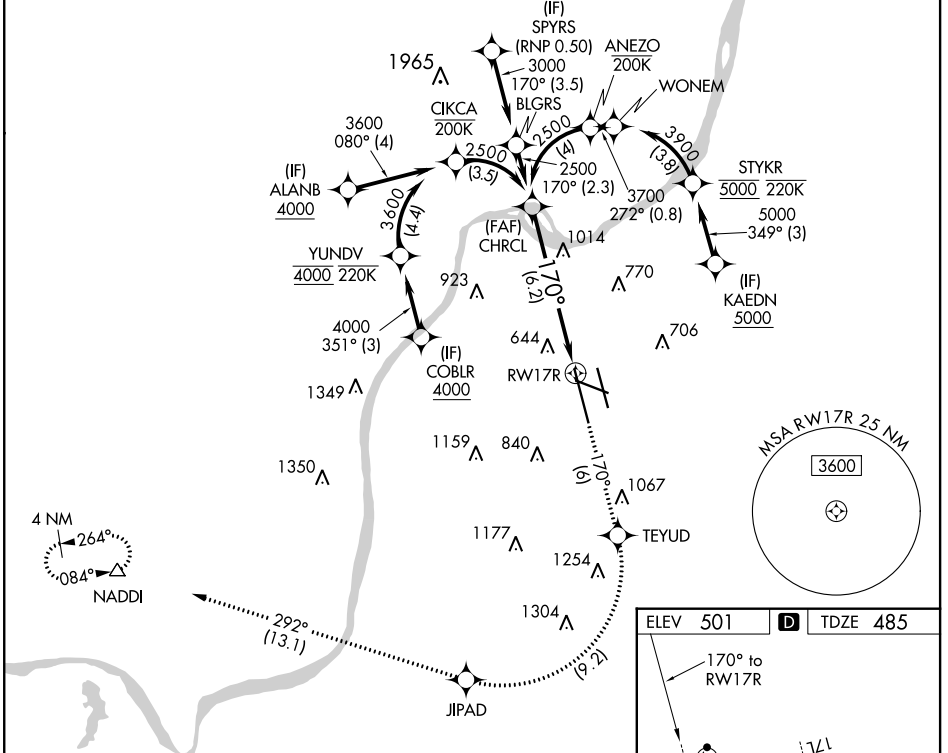
| | |
|-------------|----------------------|
| APP CRS | Rwy Idg 10000 |
| 170° | TDZE 485 |
| | Apt Elev 501 |

RNAV (RNP) Z RWY 17R

LOUISVILLE MUHAMMAD ALI INTL (SDF)

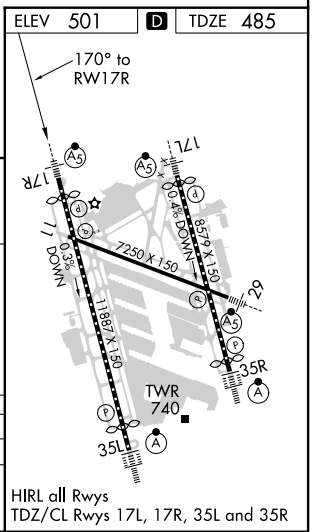
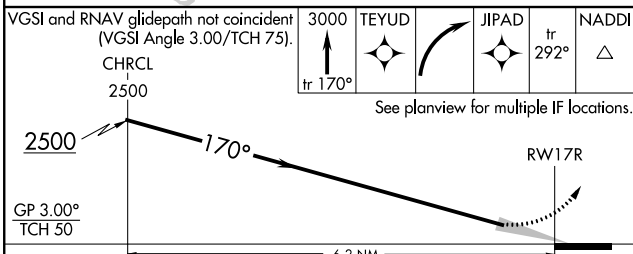
| | | | |
|--|--|-------|--|
| RNP AR APCH. RF required. | | MALSR | MISSED APPROACH: Climb to 3000 on track 170° to TEYUD right turn to JIPAD and on track 292° to NADDI and hold. |
| <p>▼ For uncompensated Baro-VNAV systems, procedure NA below -14°C or above 54°C. For inop ALS, increase RNP 0.30 all Cats visibility to 1 3/8 SM. Simultaneous approach authorized, except for arrivals at KAEDN, ALANB, and COBLR.</p> | | | |

| | | | | | |
|--------------------------|--|--|-------------------------------|--------------------------------|-------|
| D-ATIS 118.725 | LOUISVILLE APP CON 132.075 327.0 | LOUISVILLE TOWER 124.2 257.8 | GND CON 121.7 348.6 | CLNC DEL 126.1 275.8 | CPDLC |
|--------------------------|--|--|-------------------------------|--------------------------------|-------|



SE-1, 25 MAR 2021 to 22 APR 2021

SE-1, 25 MAR 2021 to 22 APR 2021



| | | | | |
|-------------|--------|---|-------------|---|
| CATEGORY | A | B | C | D |
| RNP 0.30 DA | 974/60 | | 489 (500-1) | |

AUTHORIZATION REQUIRED