

# REDSTONE SIX ARRIVAL

LOUISVILLE, KENTUCKY

LOUISVILLE APP CON  
 132.075 327.0  
 LOU ATIS  
 120.025  
 SDF D-ATIS  
 118.725

ROSEWOOD  
 117.5 ROD  
 Chan 122  
 N40°17.27'-W084°02.59'  
 L-27, H-10

CINCINNATI  
 117.3 CVG  
 Chan 120  
 N39°00.96'-W084°42.20'  
 L-26-27

SHIRT  
 N39°37.80'  
 W83°34.89'

APPLETON  
 116.7 APE  
 Chan 114  
 N40°09.06'-W082°35.30'  
 L-29, H-10

WARSA  
 N38°45.80'  
 W84°56.89'

NERVE  
 N38°36.94'  
 W85°05.42'

RDSTN  
 N38°23.38'  
 W85°18.38'

ZOPOM  
 N38°14.23'  
 W85°27.06'

LOUISVILLE  
 114.8 IUU  
 Chan 95  
 N38°06.21'-W085°34.65'

FALMOUTH  
 117.0 FLM  
 Chan 117

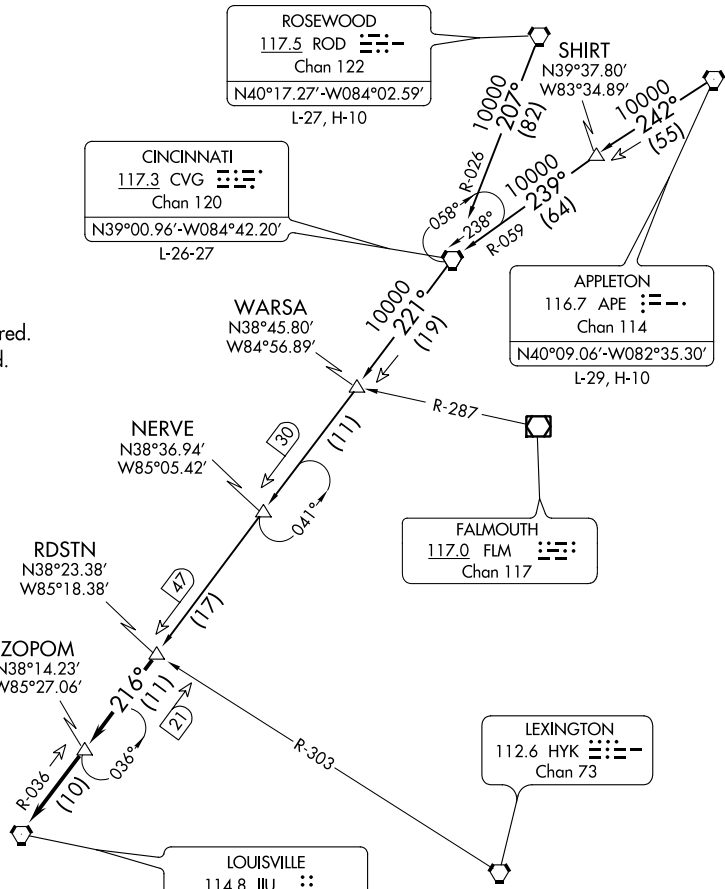
LEXINGTON  
 112.6 HYK  
 Chan 73

NOTE: RADAR required.  
 NOTE: DME required.

CLARK  
 RGNL

BOWMAN  
 FIELD

LOUISVILLE  
 MUHAMMAD ALI  
 INTL



NOTE: Chart not to scale.

## ARRIVAL ROUTE DESCRIPTION

**APPLETON TRANSITION (APE.RDSTN6):** From over APE VORTAC via APE R-242 and CVG R-059 to CVG VORTAC, then via CVG R-221 to RDSTN. Thence....

**CINCINNATI TRANSITION (CVG.RDSTN6):** From over CVG VORTAC via CVG R-221 to RDSTN. Thence....

**ROSEWOOD TRANSITION (ROD.RDSTN6):** From over ROD VORTAC via ROD R-207 and CVG R-026 to CVG VORTAC, then via CVG R-221 to RDSTN. Thence....

....from over RDSTN on IUU R-036 to ZOPOM, then on IUU R-036 to IUU VORTAC.  
 Expect radar vectors to final approach after ZOPOM.

# REDSTONE SIX ARRIVAL

LOUISVILLE, KENTUCKY