


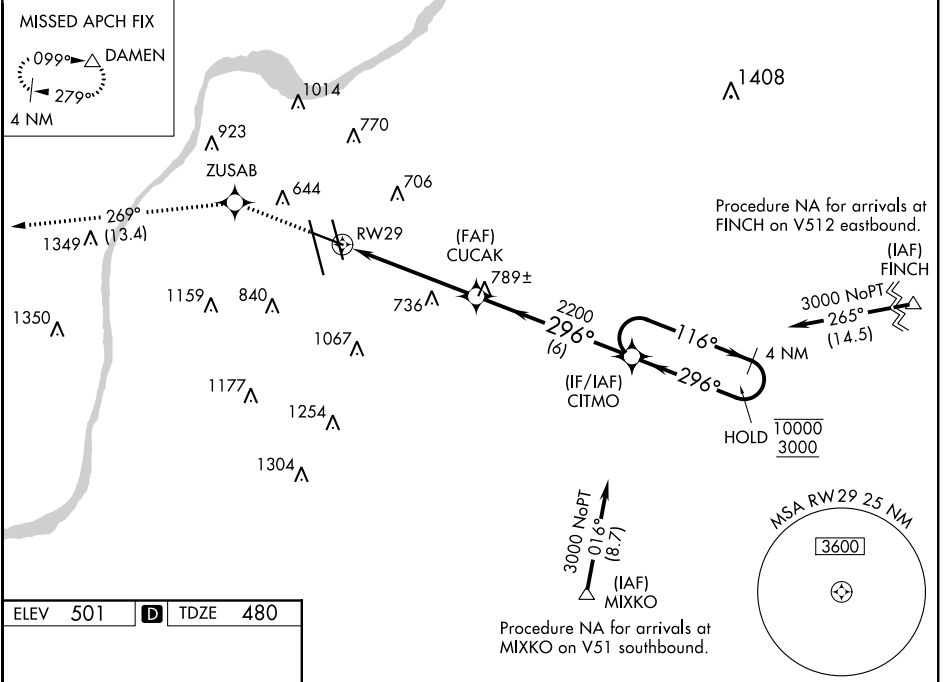
WAAS CH 93643 W29A	APP CRS 296°	Rwy Idg 7250 TDZE 480 Apt Elev 501
--	------------------------	---

RNAV (GPS) RWY 29

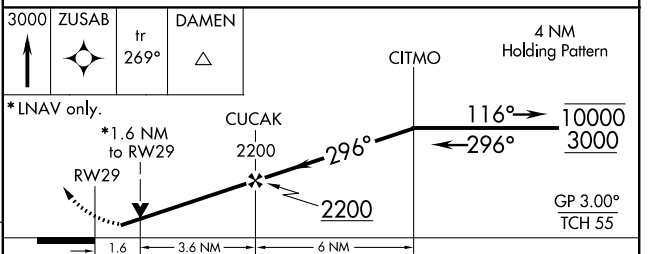
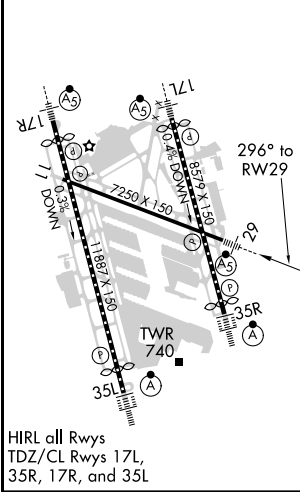
LOUISVILLE MUHAMMAD ALI INTL (SDF)

RNP APCH.	<p>▼ Circling Rwy 11 NA at night. Rwy 29 helicopter visibility reduction below RVR 4000 NA. For uncompensated Baro-VNAV systems, LNAV/VNAV NA below -16°C or above 54°C. For inop ALS, increase LPV all Cats visibility and LNAV Cats A/B visibility to RVR 5000.</p>	MALSR 	MISSED APPROACH: Climb to 3000 direct ZUSAB and on track 269° to DAMEN and hold.
-----------	---	--	--

D-ATIS 118.725	LOUISVILLE APP CON 132.075 327.0	LOUISVILLE TOWER 124.2 257.8	GND CON 121.7 348.6	CLNC DEL 126.1 275.8	CPDLC
--------------------------	--	---	-------------------------------	--------------------------------	-------



ELEV 501	D	TDZE 480
----------	----------	----------



CATEGORY	A	B	C	D
LPV DA		773/40	293 (300-¾)	
LNAV/VNAV DA		943/50	463 (500-1)	
LNAV MDA	1040/40	560 (600-¾)	1040/50 560 (600-1¼)	1040/60 560 (600-1¼)
C CIRCLING	1040-1 539 (600-1)	1140-1 639 (700-1)	1160-1¾ 659 (700-1¾)	1400-3 899 (900-3)

SE-1, 25 MAR 2021 to 22 APR 2021

SE-1, 25 MAR 2021 to 22 APR 2021