

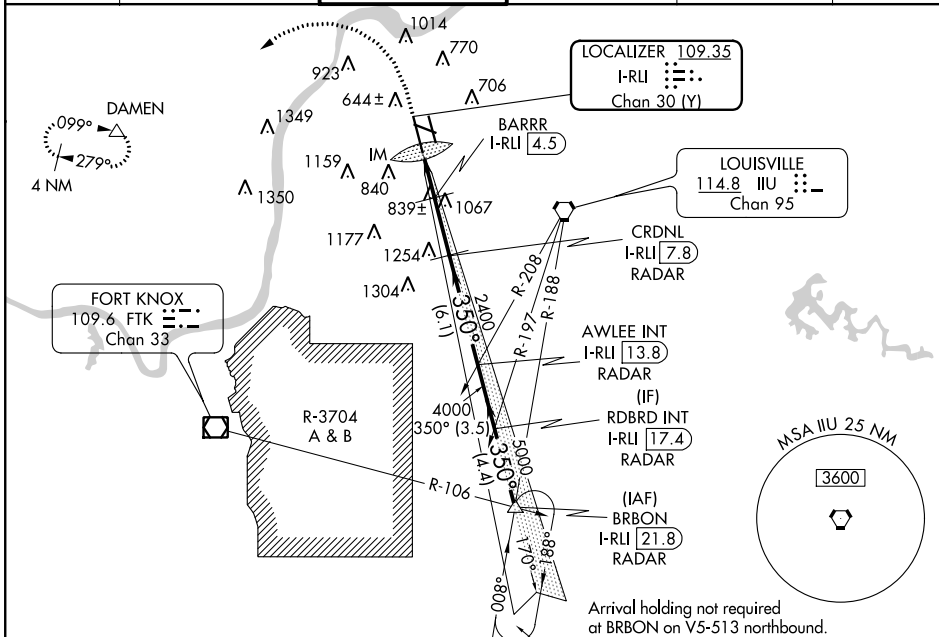
LOC/DME I-RLI <b>109.35</b>	APP CRS <b>350°</b>	Rwy Idg TDZE <b>10000</b> <b>464</b>
Chan <b>30 (Y)</b>		Apt Elev <b>501</b>

# ILS or LOC RWY 35L

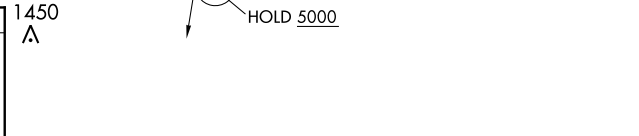
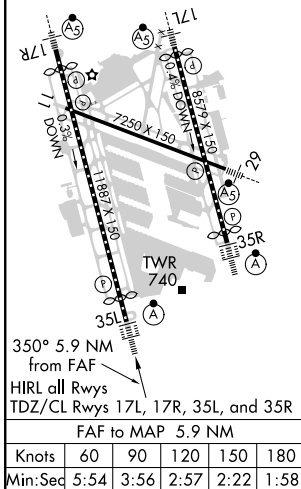
LOUISVILLE MUHAMMAD ALI INTL (SDF)

RNAV 1-GPS required. DME or RADAR required.	ALSF-2 	MISSED APPROACH: Climb to 1600 then climbing left turn to 3000 direct to DAMEN and hold. (GPS required)
Simultaneous approach authorized. For inop ALS, increase S-LOC 35L Cat C/D visibility to 1 1/2 SM. Circling Rwy 11 NA at night.		

D-ATIS <b>118.725</b>	LOUISVILLE APP CON <b>132.075 327.0</b>	LOUISVILLE TOWER <b>124.2 257.8</b>	GND CON <b>121.7 348.6</b>	CLNC DEL <b>126.1 275.8</b>	CPDLC
--------------------------	--	--	-------------------------------	--------------------------------	-------



ELEV <b>501</b>	<b>D</b>	TDZE <b>464</b>
-----------------	----------	-----------------



CATEGORY	B				C		D	
S-ILS 35L	664/18 200 (200-1/2)							
S-LOC 35L	1100/24 636 (700-1/2)				1100-1 3/4 636 (700-1 3/8)			
CIRCLING	1100-1 599 (600-1)		1140-1 639 (700-1)		1160-1 3/4 659 (700-1 3/4)		1400-3 899 (900-3)	

SE-1, 25 MAR 2021 to 22 APR 2021

SE-1, 25 MAR 2021 to 22 APR 2021