

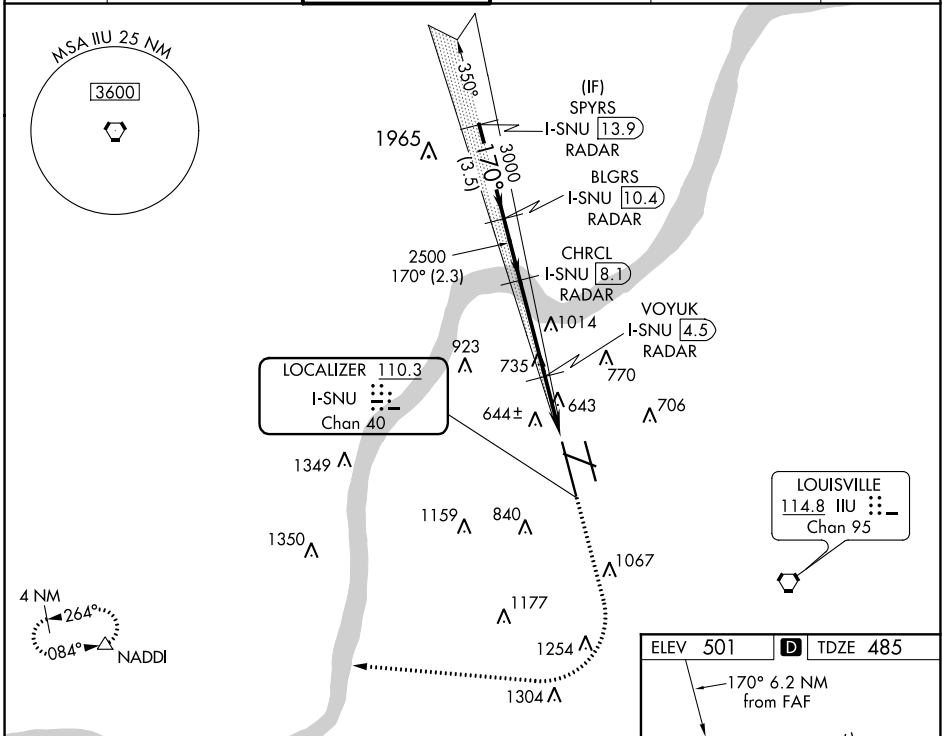
LOC/DME I-SNU 110.3 Chan 40	APP CRS 170°	Rwy Idg 10000 TDZE 485 Apt Elev 501
---	------------------------	--

ILS or LOC RWY 17R

LOUISVILLE MUHAMMAD ALI INTL (SDF)

RNAV 1-GPS required. DME or RADAR required.	MALSR 	MISSED APPROACH: Climb to 1600 then climbing right turn to 3000 direct NADDI and hold.
Circling Rwy 11 NA at night. Simultaneous approach authorized. For inop ALS, increase S-LOC 17R Cat C/D visibility to RVR 6000.		

D-ATIS 118.725	LOUISVILLE APP CON 132.075 327.0	LOUISVILLE TOWER 124.2 257.8	GND CON 121.7 348.6	CLNC DEL 126.1 275.8	CPDLC
--------------------------	--	--	-------------------------------	--------------------------------	-------

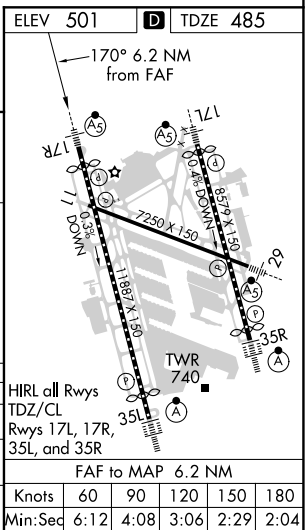


VGSI and ILS glidepath not coincident (VGSI Angle 3.00/TCH 75).

	1600	3000	NADDI
	*LOC only		

SPYRS I-SNU [13.9] RADAR	BLGRS I-SNU [10.4] RADAR	CHRCL I-SNU [8.1] RADAR	VOYUK I-SNU [4.5] RADAR	*I-SNU [3]	I-SNU [1.9]
4000	3000	2500	*1300		
GS 3.00° TCH 50					
	3.5 NM	2.3 NM	3.6 NM	1.5 NM	1.1

CATEGORY	A	B	C	D
S-ILS 17R		685/18	200 (200-½)	
S-LOC 17R	900/24	415 (500-½)	900/40	415 (500-¾)
CIRCLING	1040-1 539 (600-1)	1140-1 639 (700-1)	1160-1¾ 659 (700-1¾)	1400-3 899 (900-3)



SE-1, 25 MAR 2021 to 22 APR 2021

SE-1, 25 MAR 2021 to 22 APR 2021