

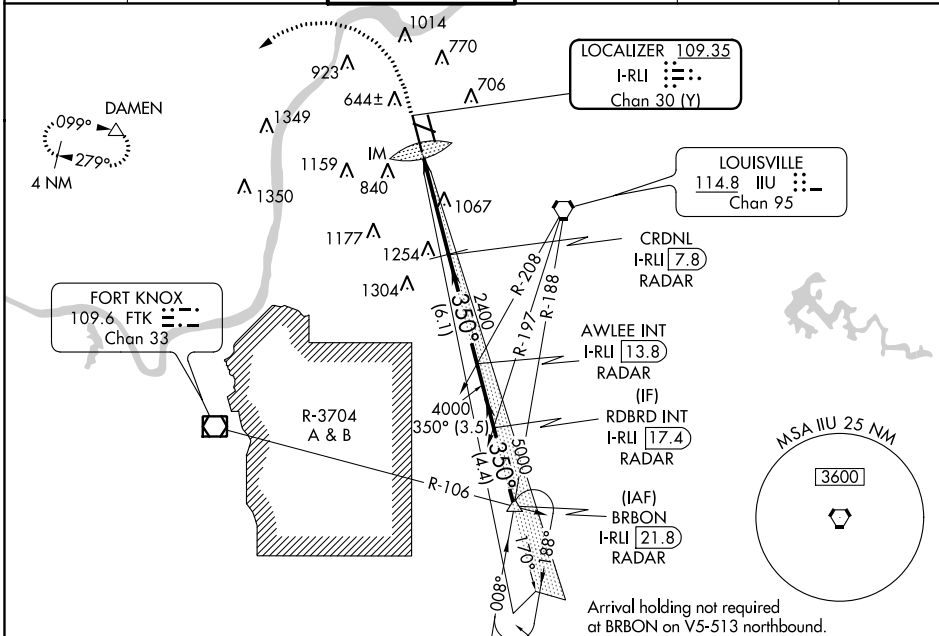
LOC/DME I-RLI <b>109.35</b>	APP CRS <b>350°</b>	Rwy Idg TDZE <b>464</b>	<b>10000</b>
Chan <b>30 (Y)</b>		Apt Elev <b>501</b>	

# ILS RWY 35L (SA CAT I)

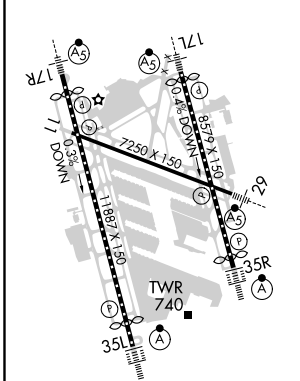
LOUISVILLE MUHAMMAD ALI INTL (SDF')

RNAV 1-GPS required. DME or RADAR required.		ALSF-2 	MISSED APPROACH: Climb to 1600 then climbing left turn to 3000 direct to DAMEN and hold. (GPS required)
Simultaneous approach authorized. Requires specific OPSPEC, MSPEC, or LOA approval and use of HUD to DH.			

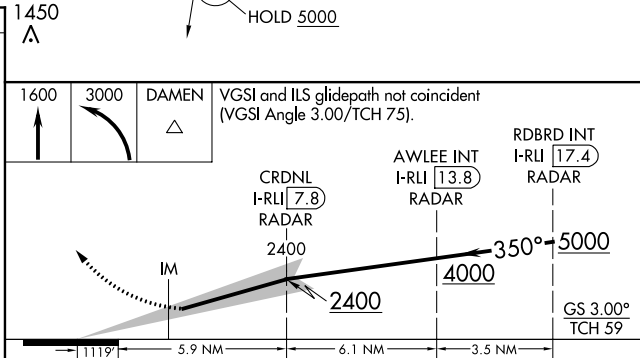
D-ATIS <b>118.725</b>	LOUISVILLE APP CON <b>132.075 327.0</b>	LOUISVILLE TOWER <b>124.2 257.8</b>	GND CON <b>121.7 348.6</b>	CLNC DEL <b>126.1 275.8</b>	CPDLC
--------------------------	--	--	-------------------------------	--------------------------------	-------



ELEV <b>501</b>	<b>D</b>	TDZE <b>464</b>
-----------------	----------	-----------------



HIRL all Rwys  
TDZ/CL Rwys 17L, 17R, 35L, and 35R



CATEGORY	A	B	C	D
S-ILS 35L	RA 154/14 150 DA 614			

**SA CATEGORY I ILS - SPECIAL AIRCREW & AIRCRAFT CERTIFICATION REQUIRED**

SE-1, 25 MAR 2021 to 22 APR 2021

SE-1, 25 MAR 2021 to 22 APR 2021