

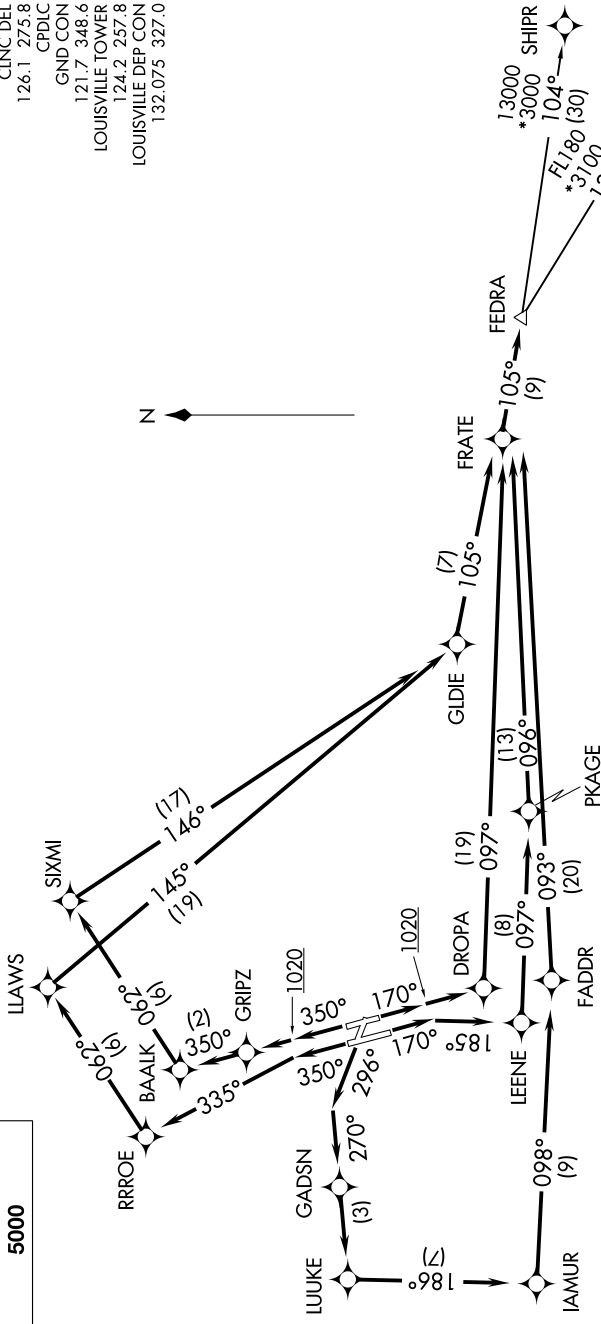
FEDRA FIVE DEPARTURE (RNAV)

LOUISVILLE, KENTUCKY

D-ATIS 118.725
 CLINC DEL
 126.1 275.8
 CPDIC
 GND CON
 121.7 348.6
 LOUISVILLE TOWER
 124.2 257.8
 LOUISVILLE DEP CON
 132.075 327.0



TOP ALTITUDE:
 5000



- NOTE: RNAV 1.
- NOTE: DME/DME/IRU or GPS required.
- NOTE: RADAR required for non-GPS equipped aircraft.
- NOTE: For Turbojet aircraft only.
- NOTE: If unable to accept climb rate, advise ATC on initial contact.
- NOTE: Transponder code will be issued via PDC or Louisville clearance delivery.

TAKEOFF MINIMUMS:
 Rwy 11: NA-ATC.
 Rwys 17L/R, 29, 35L/R: Standard with minimum climb of 500' per NM to 1020.

NOTE: Chart not to scale.

(NARRATIVE ON FOLLOWING PAGE)

SE-1, 25 MAR 2021 to 22 APR 2021

SE-1, 25 MAR 2021 to 22 APR 2021

FEDRA FIVE DEPARTURE (RNAV)

(FEDRA5.FEDRA) 15AUG19

LOUISVILLE, KENTUCKY

LOUISVILLE MUHAMMAD ALI INTL (SDF)