
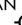




# DARBY SEVEN ARRIVAL

LOUISVILLE, KENTUCKY

LOUISVILLE APP CON  
 132.075 327.0  
 LOU ATIS  
 120.025  
 SDF D-ATIS  
 118.725


CLARK RGNL   
 BOWMAN FIELD   
 LOUISVILLE MUHAMMAD ALI INTL 

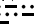
NOTE: RADAR required.  
 NOTE: DME required for LONDON and UNCKL Transitions.

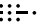
LOUISVILLE  
 114.8 IIIU   
 Chan 95  
 N38° 06.21'  
 W85° 34.65'

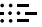
DARBY  
 N37° 39.26'  
 W84° 57.21'

UNCKL  
 N37° 28.88'  
 W84° 42.98'

LONDON  
 116.1 LOZ   
 Chan 108  
 N37° 01.99' - W84° 06.60'  
 L-26

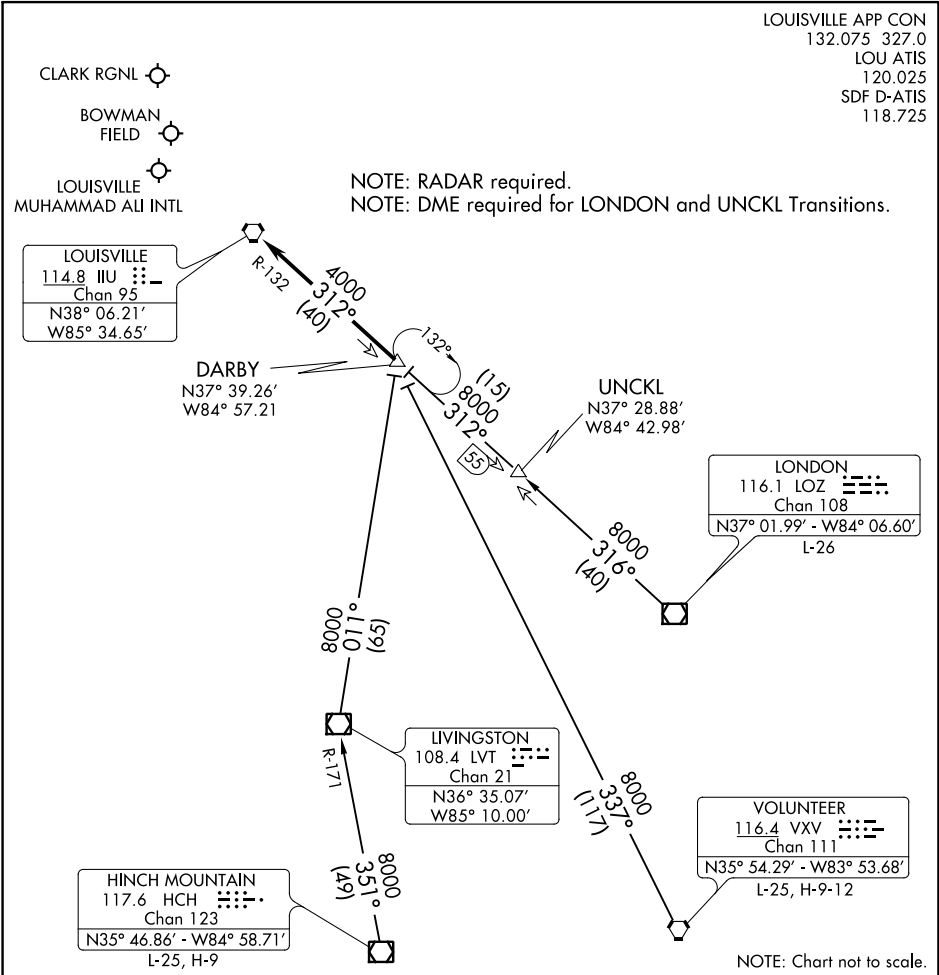
LIVINGSTON  
 108.4 LVT   
 Chan 21  
 N36° 35.07'  
 W85° 10.00'

HINCH MOUNTAIN  
 117.6 HCH   
 Chan 123  
 N35° 46.86' - W84° 58.71'  
 L-25, H-9

VOLUNTEER  
 116.4 VXV   
 Chan 111  
 N35° 54.29' - W83° 53.68'  
 L-25, H-9-12

SE-1, 25 MAR 2021 to 22 APR 2021

SE-1, 25 MAR 2021 to 22 APR 2021



NOTE: Chart not to scale.

## ARRIVAL ROUTE DESCRIPTION

**HINCH MOUNTAIN TRANSITION (HINCH.DARBY7):** From over HCH VOR/DME via HCH R-351 and LVT R-171 to LVT VOR/DME, then via LVT R-011 to DARBY INT. Thence. . .

**LONDON TRANSITION (LOZ.DARBY7):** From over LOZ VOR/DME via LOZ R-316 to UNCKL INT, then via IIIU R-132 to DARBY INT. Thence. . .

**UNCKL TRANSITION (UNCKL.DARBY7):** From over UNCKL INT via IIIU R-132 to DARBY INT. Thence. . .

**VOLUNTEER TRANSITION (VXV.DARBY7):** From over VXV VORTAC via VXV R-337 to DARBY INT. Thence. . .

. . . from DARBY INT on IIIU R-132 to IIIU VORTAC. Expect radar vectors to final course.

# DARBY SEVEN ARRIVAL

LOUISVILLE, KENTUCKY