

CRRGO FOUR DEPARTURE (RNAV)

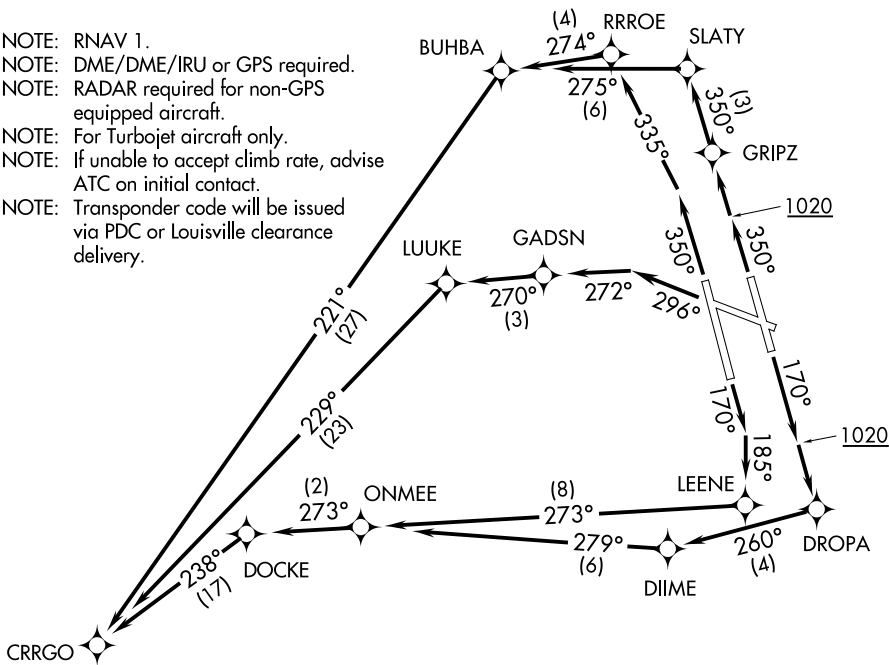
D-ATIS 118.725
 CLNC DEL
 126.1 275.8
 CPDLC
 GND CON
 121.7 348.6
 LOUISVILLE TOWER
 124.2 257.8
 LOUISVILLE DEP CON
 132.075 327.0

**TOP ALTITUDE:
5000**

TAKEOFF MINIMUMS:

Rwy 11: NA - ATC.
 Rwys 17L/R, 29, 35L/R: Standard with
 minimum climb of 500' per NM to 1020.

- NOTE: RNAV 1.
- NOTE: DME/DME/IRU or GPS required.
- NOTE: RADAR required for non-GPS equipped aircraft.
- NOTE: For Turbojet aircraft only.
- NOTE: If unable to accept climb rate, advise ATC on initial contact.
- NOTE: Transponder code will be issued via PDC or Louisville clearance delivery.



NOTE: Chart not to scale.

DEPARTURE ROUTE DESCRIPTION

- TAKEOFF RUNWAY 17L: Climb heading 170° to 1020, then direct DROPA, then on depicted route to CRRGO, thence....
- TAKEOFF RUNWAY 17R: Climb heading 170° to intercept course 185° to LEENE, then on depicted route to CRRGO, thence....
- TAKEOFF RUNWAY 29: Climb heading 296° to intercept course 272° to GADSN, then on depicted route to CRRGO, thence....
- TAKEOFF RUNWAY 35L: Climb heading 350° to intercept course 335° to RRROE, then on depicted route to CRRGO, thence....
- TAKEOFF RUNWAY 35R: Climb heading 350° to 1020, then direct GRIPZ, then on depicted route to CRRGO, thence....

....maintain 5000. Expect clearance to filed altitude 10 minutes after departure.

CRRGO FOUR DEPARTURE (RNAV)

SE-1, 25 MAR 2021 to 22 APR 2021

SE-1, 25 MAR 2021 to 22 APR 2021