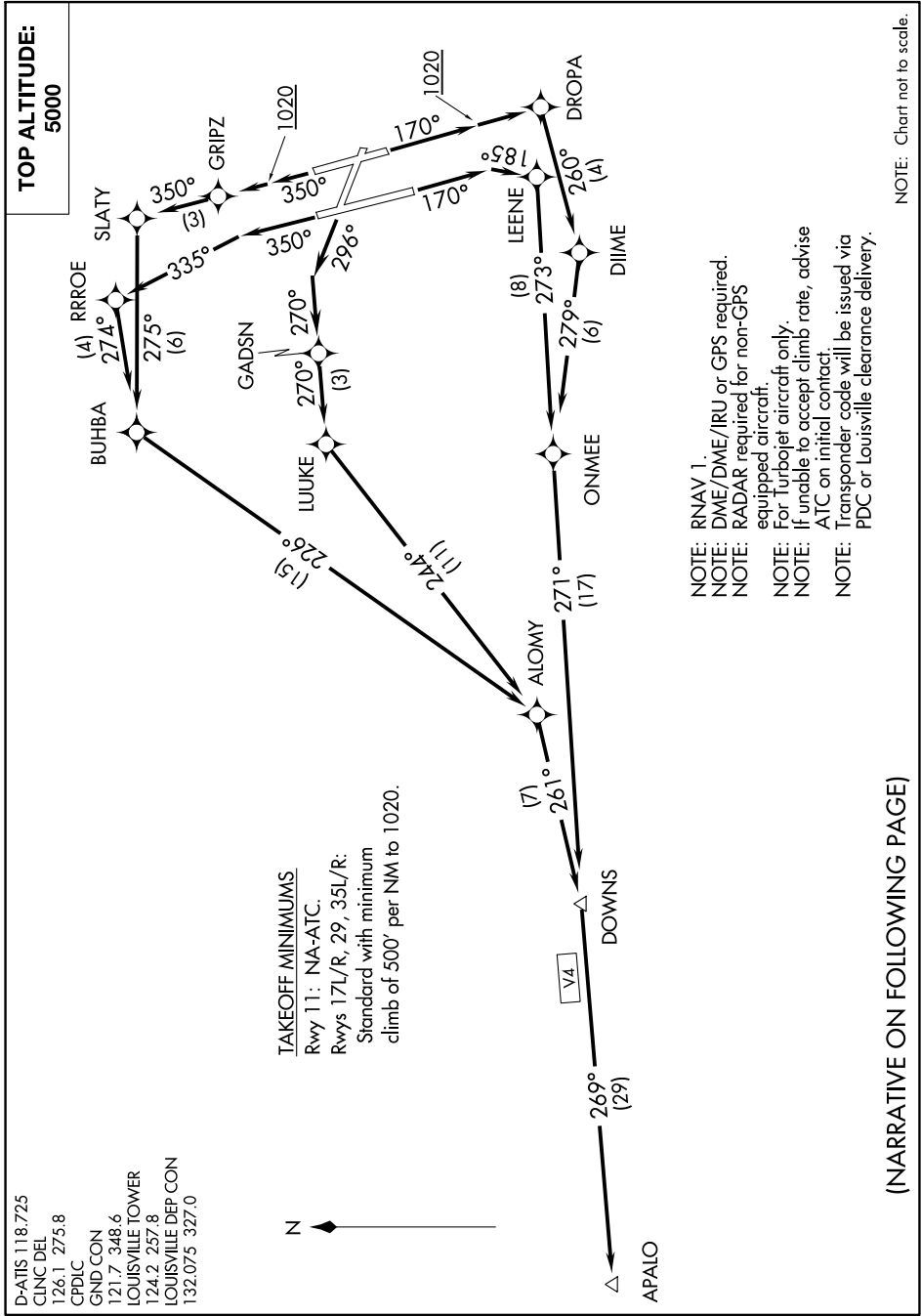


# APALO SIX DEPARTURE (RNAV)

LOUISVILLE, KENTUCKY

SE-1, 25 MAR 2021 to 22 APR 2021



- NOTE: RNAV 1.
- NOTE: DME/DME/IRU or GPS required.
- NOTE: RADAR required for non-GPS equipped aircraft.
- NOTE: For Turbojet aircraft only.
- NOTE: If unable to accept climb rate, advise ATC on initial contact
- NOTE: Transponder code will be issued via PDC or Louisville clearance delivery.

NOTE: Chart not to scale.

(NARRATIVE ON FOLLOWING PAGE)

SE-1, 25 MAR 2021 to 22 APR 2021

# APALO SIX DEPARTURE (RNAV)

LOUISVILLE, KENTUCKY