

APP CRS	Rwy Idg	5660
256°	TDZE	48
	Apt Elev	60

RNAV (RNP) RWY 26R

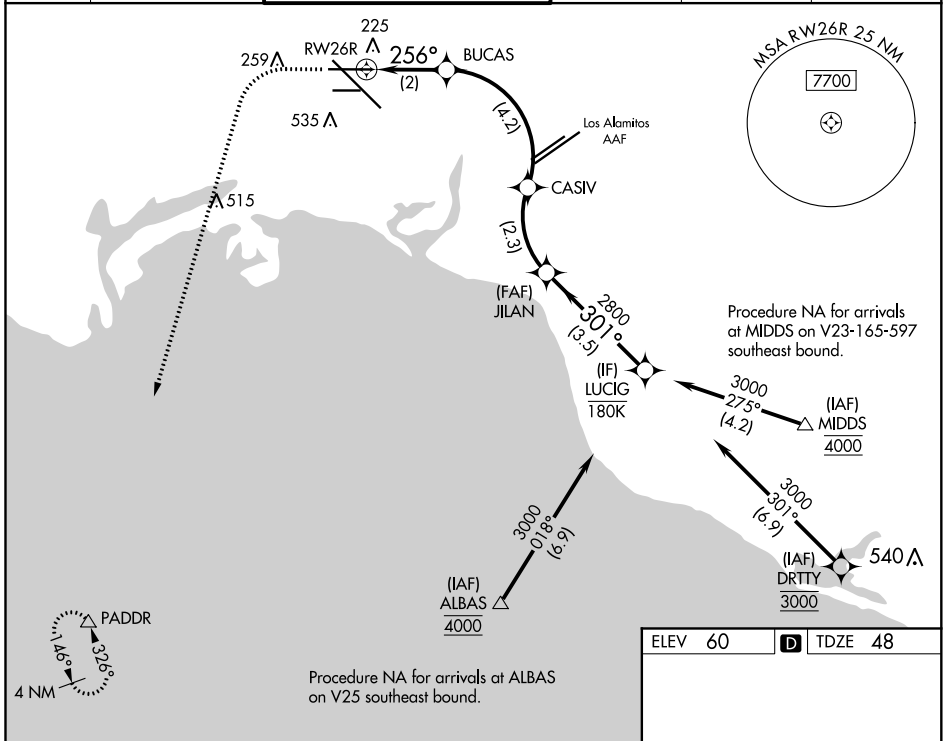
LONG BEACH/DAUGHERTY FIELD (LGB)

RNP AR APCH. RF required.

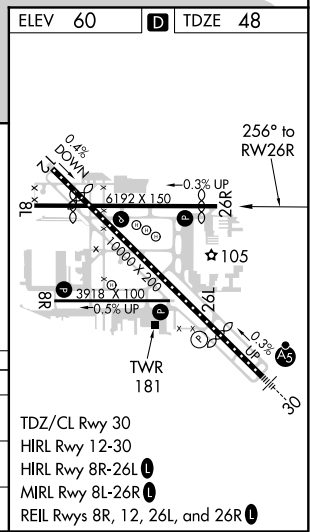
▽ For uncompensated Baro-VNAV systems, procedure NA below 4°C (40°F) or above 54°C (130°F).

MISSED APPROACH: Climb to 800 then climbing left turn to 3000 direct PADDR and hold.

ATIS 127.75	SOCAL APP CON 125.35 316.125	LONG BEACH TOWER* 120.5 257.6 (Rwy 12) 119.4 (CTAF) 0 257.6 (Rwy 30)	GND CON 133.0 257.6	CLNC DEL 118.15	UNICOM 122.95
-----------------------	--	---	-------------------------------	---------------------------	-------------------------



800	3000	PADDR	VGSI and RNAV glidepath not coincident (VGSI Angle 3.10/TCH 62).	LUCIG
				JILAN 2800
				CASIV 2066
				BUCAS 731
				RWY 26R
				GP 3.00° TCH 55
	2 NM	4.2 NM	2.3 NM	3.5 NM
CATEGORY	A	B	C	D
RNP 0.15 DA	320-1 272 (300-1)			
RNP 0.30 DA	415-1¼ 367 (400-1¼)			
AUTHORIZATION REQUIRED				



SW-3, 25 MAR 2021 to 22 APR 2021

SW-3, 25 MAR 2021 to 22 APR 2021