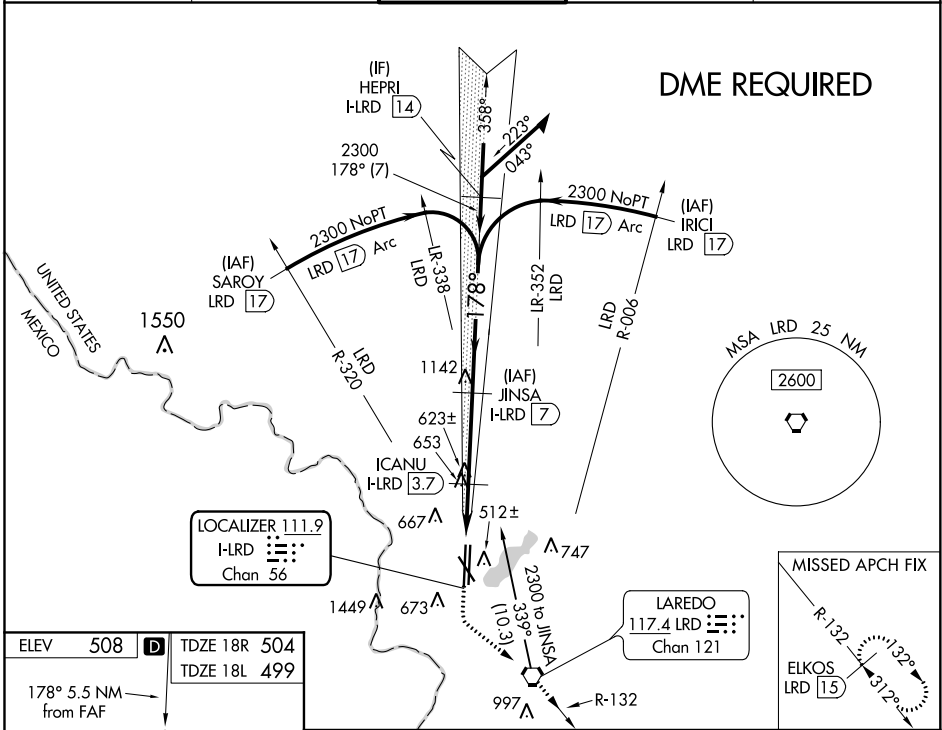


LOC/DME I-LRD <b>111.9</b> Chan 56	APP CRS <b>178°</b>	Rwy Idg <b>8743 8236</b> TDZE <b>504 499</b> Apt Elev <b>508 508</b>
--	------------------------	---

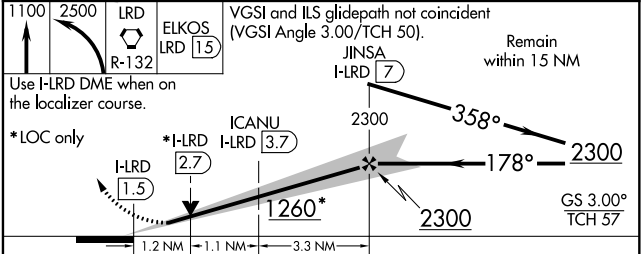
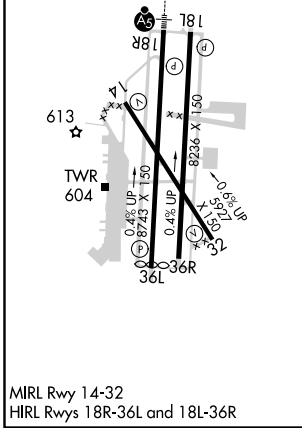
# ILS or LOC RWY 18R

LAREDO INTL (L.R.D)

<p>Circling NA west of Rwy 14 and 36L. DME required. For inop ALS, increase S-ILS 18R Cat E visibility to 3/4 SM and increase S-LOC 18R Cat C/D/E visibility to 1 1/2 SM.</p>	<p>MALSR</p>	<p>MISSED APPROACH: Climb to 1100 then climbing left turn to 2500 direct LRD VORTAC and on LRD VORTAC R-132 to ELKOS/LRD 15 DME and hold.</p>		
			<p>ATIS <b>125.775</b></p>	<p>HOUSTON CENTER <b>127.8 307.2</b></p>



ELEV 508	<b>D</b>	TDZE 18R 504
178° 5.5 NM from FAF		TDZE 18L 499



CATEGORY	A	B	C	D	E
S-ILS 18R	704-1/2		200 (200-1/2)		
S-LOC 18R	920-1/2	416 (500-1/2)	920-3/4		416 (500-3/4)
SIDESTEP 18L	920-1	421 (500-1)	920-1 1/2 421 (500-1 1/2)	920-2	421 (500-2)
<b>C</b> CIRCLING	940-1 432 (500-1)	980-1 472 (500-1)	1100-1 1/2 592 (600-1 1/2)	1200-2 1/4 692 (700-2 1/4)	1200-2 1/2 692 (700-2 1/2)

SC-3, 25 MAR 2021 to 22 APR 2021

SC-3, 25 MAR 2021 to 22 APR 2021