

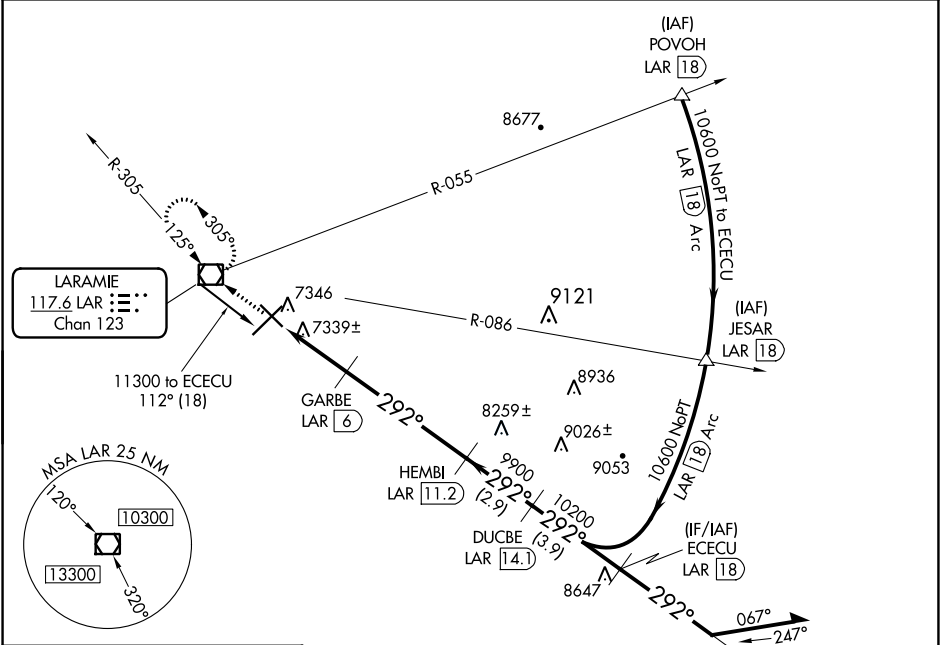
VOR/DME LAR 117.6 Chan 123	APP CRS 292°	Rwy Idg TDZE 6300 7278 Apt Elev 7284
--	------------------------	---

VOR/DME RWY 30

LARAMIE RGNL (L.A.R.)

-35°C	ODALS 	MISSED APPROACH: Climb to 9600 direct LAR VOR/DME and hold, continue climb-in-hold to 9600.
-------	-----------	---

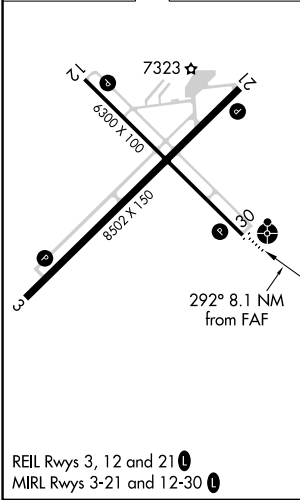
ASOS 135.475	DENVER CENTER 125.9 284.7	UNICOM 123.05 (CTAF)
------------------------	-------------------------------------	--------------------------------



NW-1, 25 MAR 2021 to 22 APR 2021

NW-1, 25 MAR 2021 to 22 APR 2021

ELEV 7284	D	TDZE 7278
-----------	----------	-----------



9600	LAR	ECECU LAR 18	Remain within 10 NM
	GARBE LAR 6 HEMBI LAR 11.2 DUCBE LAR 14.1	292° 10200 10600	112° 10600
	LAR 3.1 LAR 4 LAR 6	3.00° TCH 41	
	8220 9900 10200		
	0.9	2 NM	5.2 NM
			2.9 NM
			3.9 NM
CATEGORY	A	B	C
S-30	7600-¾ 322 (400-¾)		7600-1 322 (400-1)
CIRCLING	7660-1 376 (400-1)	7740-1 456 (500-1)	7740-1½ 456 (500-1½) 7840-2 556 (600-2)