

WAAS CH 70600 W12A	APP CRS 122°	Rwy Idg TDZE Apt Elev	6300 7275 7284
--	------------------------	-----------------------------	---

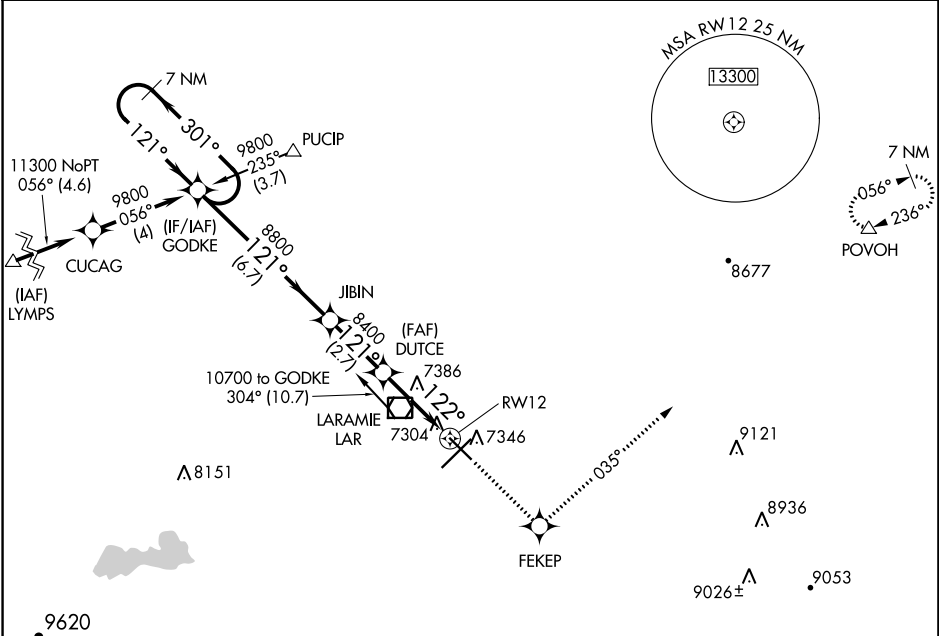
RNAV (GPS) RWY 12

LARAMIE RGNL (L.A.R.)

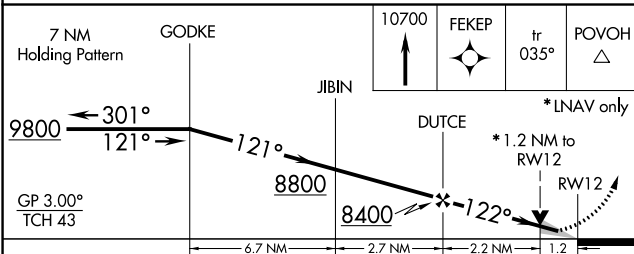
▼ DME/DME RNP-0.3 NA.
⊠ -35°C For uncompensated Baro-VNAV systems, LNAV/VNAV NA below -29°C (-20°F) or above 34°C (93°F).

MISSED APPROACH: Climb to 10700 direct FEKEP and via 035° track to POVOH and hold.

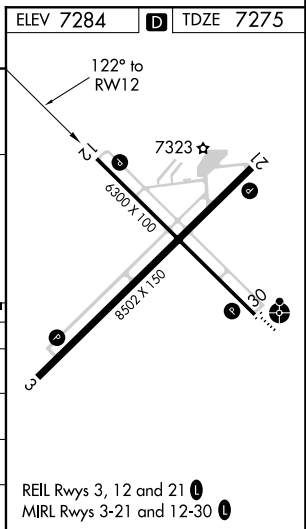
ASOS 135.475	DENVER CENTER 125.9 284.7	UNICOM 123.05 (CTAF) 📻
------------------------	-------------------------------------	---



ELEV 7284	D TDZE 7275
-----------	--------------------



CATEGORY	A	B	C	D
LPV DA	7525-1		250 (300-1)	
LNAV/VNAV DA	7622-1¼		347 (400-1¼)	
LNAV MDA	7700-1	425 (500-1)	7700-1¼	425 (500-1¼)
CIRCLING	7700-1¼ 416 (500-1¼)	7740-1¼ 456 (500-1¼)	7740-1½ 456 (500-1½)	7840-2 556 (600-2)



NW-1, 25 MAR 2021 to 22 APR 2021

NW-1, 25 MAR 2021 to 22 APR 2021