

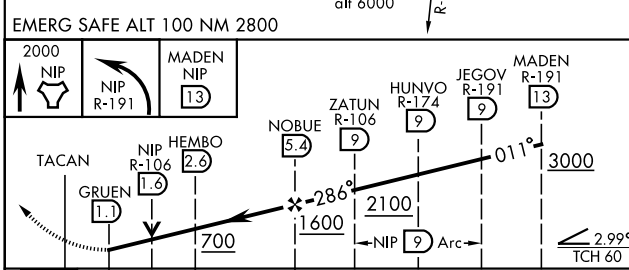
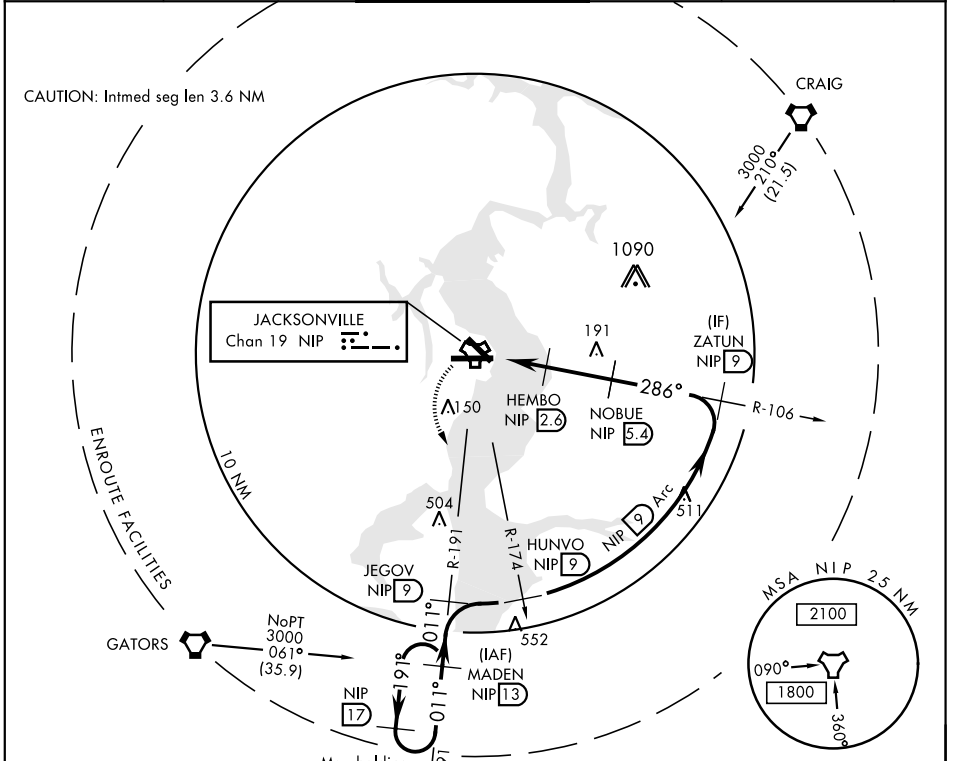
# TACAN RWY 28

TACAN Chan <b>19</b>	NIP	APCH CRS <b>286°</b>	Rwy ldg TDZE Arprt Elev <b>9003 13 23</b>
----------------------	-----	----------------------	---

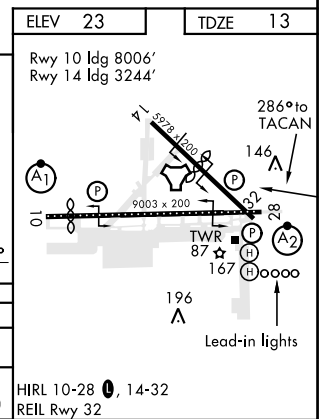
AL-209 [USN] JACKSONVILLE NAS (TOWERS FIELD) (KNIP)

<p>▼ *When ALS inop, increase CAT AB vis to 1 mile, CAT CD vis to 1½ miles.</p>	<p>SALSF </p>	<p>MISSED APPROACH: Climb to 2000 direct NIP TACAN and turn left outbound R-191 to MADEN and hold.</p>
---	---------------	--

<p>ATIS <b>124.35 290.425</b></p>	<p>JACKSONVILLE APP CON <b>127.775 377.075</b></p>	<p>NAVY JACKSONVILLE TOWER <b>125.15 (CTAF) 340.2</b></p>	<p>GND CON <b>128.6 336.4</b></p>	<p>CLNC DEL <b>134.775 353.675</b></p>	<p>ASR/PAR</p>
-----------------------------------	--	---	-----------------------------------	--	----------------



CATEGORY	A	B	C	D
S-28*	400-¾ 387 (400-¾)		400-⅞ 387 (400-⅞)	
CIRCLING	500-1 477 (500-1)		560-1½ 537 (600-1½)	800-2½ 777 (800-2½)



JACKSONVILLE, FLORIDA 30°14'N-81°41'W JACKSONVILLE NAS (TOWERS FIELD) (KNIP)

Amdt 2 10OCT19

# TACAN RWY 28

SE-3, 25 MAR 2021 to 22 APR 2021

SE-3, 25 MAR 2021 to 22 APR 2021