

HI-TACAN RWY 28

TACAN Chan 19	NIP 286°	APCH CRS 286°	Rwy ldg TDZE Arprt Elev 9003 13 23
----------------------	-----------------	----------------------	---

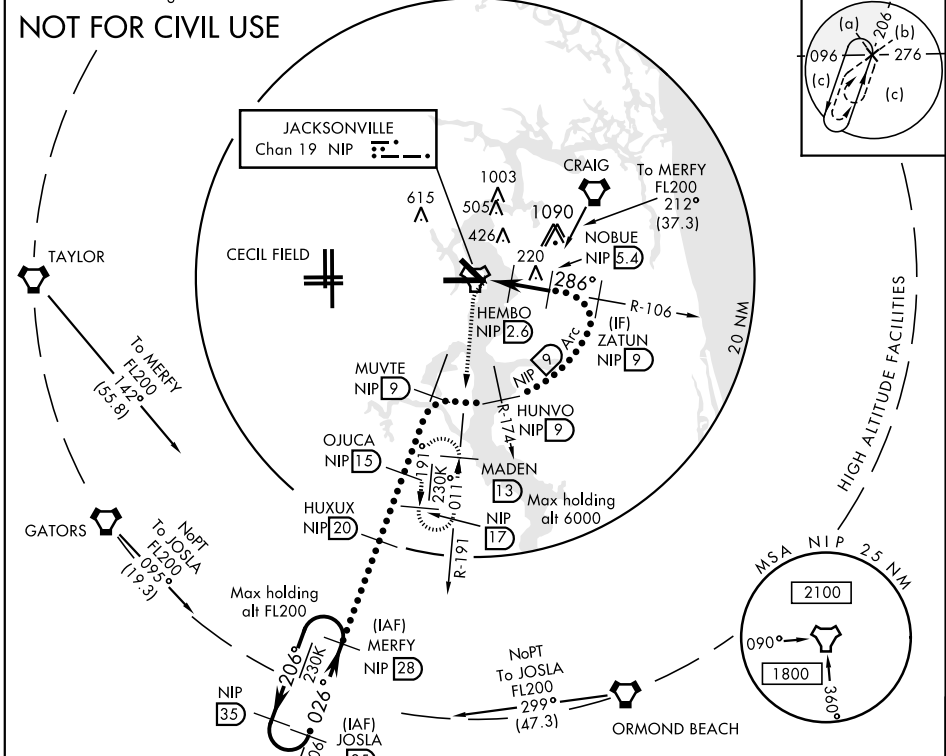
JAL-209 [USN] JACKSONVILLE NAS (TOWERS FIELD) (KNIP)

<p>▼ * When ALS inop, increase CAT CDE vis to 1 1/8 miles.</p> <p>SALSF </p>	<p>MISSED APPROACH: Climb to 2000 direct NIP TACAN and turn left outbound R-191 to MADEN and hold.</p>		
	<p>ASR/ PAR</p>		

ATIS 124.35 290.425	JACKSONVILLE APP CON 127.775 377.075	NAVY JACKSONVILLE TOWER 125.15 (CTAF) 340.2	GND CON 128.6 336.4	CLNC DEL 134.775 353.675	ASR/ PAR
----------------------------	---	--	----------------------------	---------------------------------	----------

CAUTION: Intmed seg len 3.6 NM

NOT FOR CIVIL USE



EMERG SAFE ALT 100 NM 2800			
<p>2000 NIP</p> <p>↑</p>	<p>MADEN NIP 13</p>	<p>MERYF R-206</p> <p>FL200</p>	<p>2000 NIP</p> <p>↑</p>
<p>TACAN</p> <p>GRUEN NIP 1.1</p> <p>HEMBO NIP 2.3</p> <p>NOBUE NIP 5.4</p> <p>ZATUN R-106 NIP 9</p> <p>HUNVO R-174 NIP 9</p> <p>MUVTE R-206 NIP 9</p> <p>OJUCA NIP 15</p> <p>HUXUX R-206 NIP 20</p> <p>MADEN NIP 17</p> <p>MERYF NIP 28</p> <p>JOSLA NIP 33</p>	<p>286°</p> <p>2100</p> <p>2800</p> <p>4000</p> <p>8000</p> <p>13,000</p> <p>FL200</p> <p>026°</p> <p>2.99°</p> <p>TCH 60</p>	<p>286° to TACAN</p> <p>153</p> <p>146</p> <p>28</p> <p>1038</p> <p>138</p> <p>167</p> <p>10</p> <p>1038</p>	<p>Lead-in lights</p>
CATEGORY	C	D	E
S-28 *		400-7/8	387 (400-7/8)
CIRCLING	560-1 1/2 537 (600-1 1/2)	800-2 1/2 777 (800-2 1/2)	980-3 957 (1000-3)

ELEV 23	TDZE 13
Rwy 10 ldg 8006' Rwy 14 ldg 3244'	
HIRL 10-28 14-32 REIL Rwy 32	

HI-TACAN RWY 28

SE-3, 25 MAR 2021 to 22 APR 2021

SE-3, 25 MAR 2021 to 22 APR 2021