

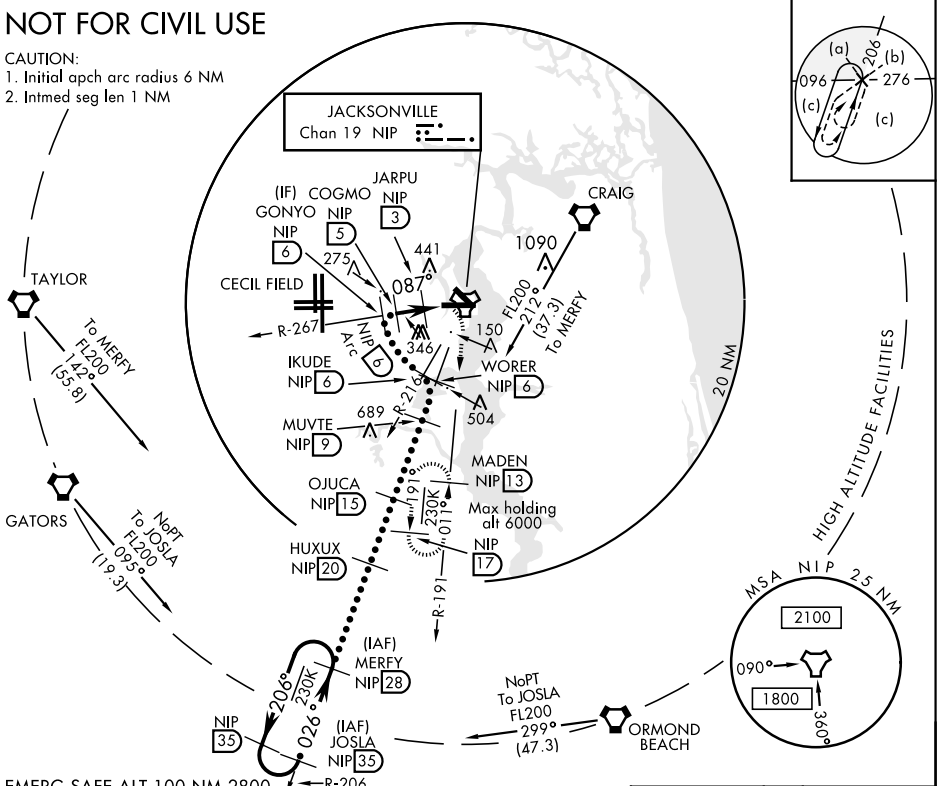
# HI-TACAN RWY 10

TACAN Chan <b>19</b>	NIP <b>087°</b>	APCH CRS <b>087°</b>	Rwy ldg <b>8006</b>	TDZE <b>21</b>	Arpt Elev <b>23</b>	JAL-209 [USN]	JACKSONVILLE NAS (TOWERS FIELD)	(KNIP)
-------------------------	--------------------	-------------------------	------------------------	-------------------	------------------------	---------------	---------------------------------	--------

<p>▼ * When ALS inop, increase CAT CDE vis to 1½ miles.</p> <p>ALSF-1 A1</p>		<p>MISSED APPROACH: Climb to 2000 direct NIP TACAN, outbound R-191 to MADEN and hold.</p>						
ATIS <b>124.35 290.425</b>	JACKSONVILLE APP CON <b>127.775 377.075</b>	NAVY JACKSONVILLE TOWER <b>125.15 (CTAF) 340.2</b>	GND CON <b>128.6 336.4</b>	CLNC DEL <b>134.775 0353.675</b>	ASR/ PAR			

## NOT FOR CIVIL USE

- CAUTION:
1. Initial apch arc radius 6 NM
  2. Intmed seg len 1 NM



EMERG SAFE ALT 100 NM 2800			<p>2000 NIP</p> <p>NIP R-191</p> <p>MADEN NIP 13</p>		ELEV 23	TDZE 21	
<p>MERFY R-206 HUXUX NIP 20 OJUVA NIP 15 WORER R-206 IKUDE R-216 GONYO R-267 COGMO NIP 5 JARPU NIP 3 TACAN NIP 1.9</p> <p>FL200 13,000 8000 4000 1700 1600 1500 1400 760</p> <p>↑2.97° TCH 51</p>			<p>↑ COGMO to MAP</p> <p>087° to TACAN</p>		<p>Rwy 10 ldg 8006'</p> <p>Rwy 14 ldg 3244'</p>		
CATEGORY	C	D	E				
S-10 *	420-¾ 399 (400-¾)					<p>HIRL 10-28 0, 14-32</p> <p>REIL Rwy 32</p>	
CIRCLING	560-1½ 537 (600-1½)	800-2½ 777 (800-2½)	920-3 897 (900-3)		<p>Lead-in lights</p>		

## HI-TACAN RWY 10



SE-3, 25 MAR 2021 to 22 APR 2021

SE-3, 25 MAR 2021 to 22 APR 2021