

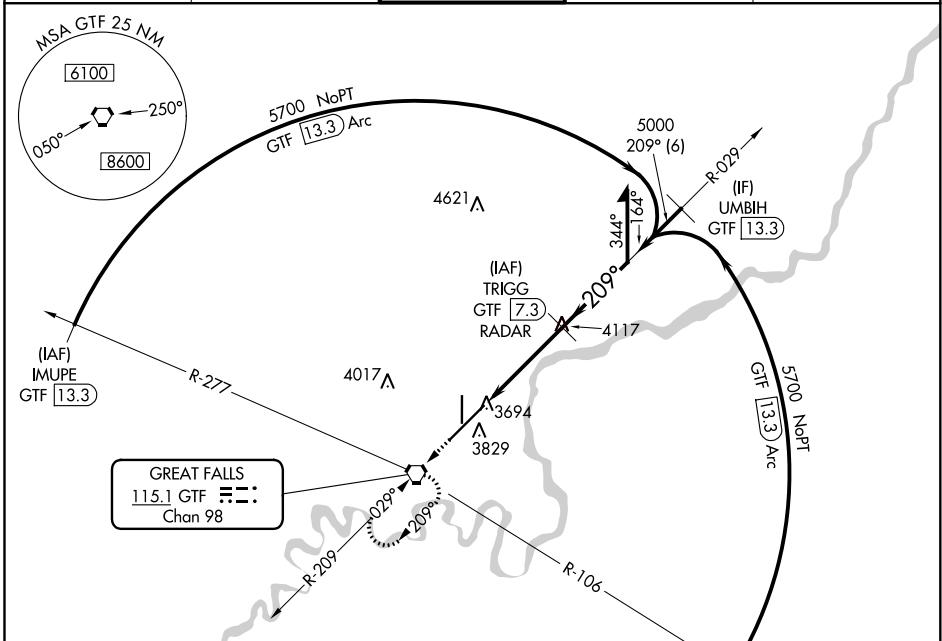
VORTAC GTF <b>115.1</b> Chan <b>98</b>	APP CRS <b>209°</b>	Rwy Idg <b>10502</b> TDZE <b>3669</b> Apt Elev <b>3680</b>
--	------------------------	--

# VOR RWY 21

GREAT FALLS INTL (GTF)

<b>V</b> <b>A</b> <b>-33°C</b>	DME or RADAR required.	MISSED APPROACH: Climb to 8000 direct GTF VORTAC, continue climb-in-hold to 8000.
--------------------------------------	------------------------	---

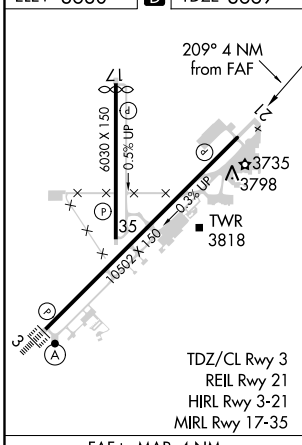
ATIS <b>126.6 269.0</b>	GREAT FALLS APP CON <b>128.6 379.175</b>	GREAT FALLS TOWER <b>118.7 282.2</b>	GND CON <b>121.7 348.6</b>	CLNC DEL <b>121.7 348.6</b>
----------------------------	---	---	-------------------------------	--------------------------------



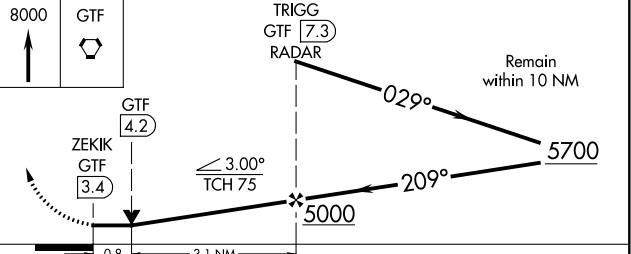
NW-1, 25 MAR 2021 to 22 APR 2021

NW-1, 25 MAR 2021 to 22 APR 2021

ELEV 3680	<b>D</b>	TDZE 3669
-----------	----------	-----------



## DME or RADAR REQUIRED



Knots	60	90	120	150	180
Min:Sec	4:00	2:40	2:00	1:36	1:20

CATEGORY	A	B	C	D
S-21	4000/55 331 (400-1)			
<b>C</b> CIRCLING	4120-1 440 (500-1)	4140-1 460 (500-1)	4320-1¾ 640 (700-1¾)	4420-2¼ 740 (800-2¼)