

RNAV (RNP) Z RWY 21

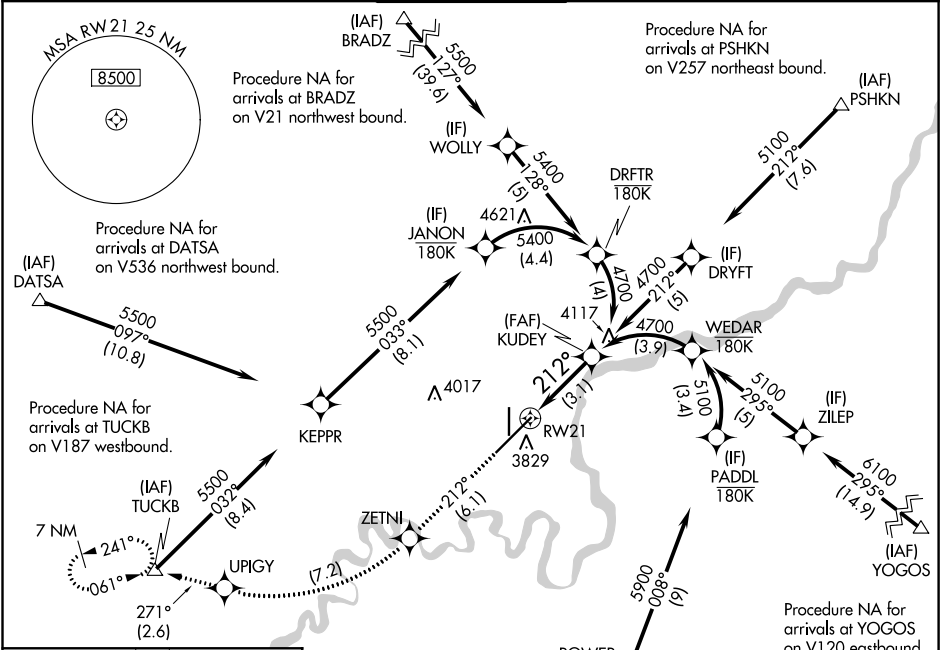
GREAT FALLS INTL (GTF)

APP CRS	Rwy Idg	10502
212°	TDZE	3669
	Apt Elev	3680

RF required. GPS required. For uncompensated Baro-VNAV systems, procedure NA below -24°C (-11°F) or above 49°C (121°F).

MISSED APPROACH: Climb to 8000 on track 212° to ZETNI, right turn to UPIGY and on track 271° to TUCKB and hold, continue climb-in-hold to 8000.

ATIS 126.6 269.0	GREAT FALLS APP CON 128.6 379.175	GREAT FALLS TOWER 118.7 282.2	GND CON 121.7 348.6	CLNC DEL 121.7 348.6
----------------------------	---	---	-------------------------------	--------------------------------



NW-1, 25 MAR 2021 to 22 APR 2021

NW-1, 25 MAR 2021 to 22 APR 2021

ELEV 3680	D	TDZE 3669
-----------	----------	-----------

212° to RWY 21

6030 X 150
0.5% UP
3735
3798
TWR 3818
1092 X 150
0.3% UP

TDZ/CL Rwy 3
REIL Rwy 21
HIRL Rwy 3-21
MIRL Rwy 17-35

Procedure NA for arrivals at URELE on V536 southbound.

(IAF) URELE

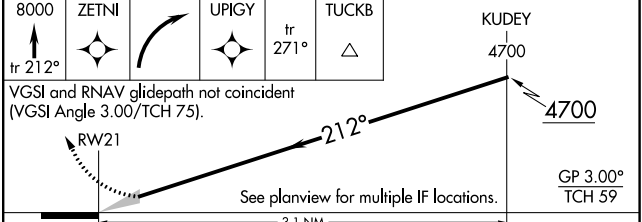
8000 ZETNI

UPIGY tr 271°

TUCKB

4949

4700 KUDEY



CATEGORY	A	B	C	D
RNP 0.10 DA		3942/45	273 (300-7%)	
RNP 0.30 DA		3992/50	323 (400-1)	

AUTHORIZATION REQUIRED