


# JOE POOL TWO DEPARTURE

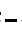
FORT WORTH NAS JRB (CARSWELL FIELD) (NF'W)  
AL-160 (FAA) FORT WORTH, TEXAS

ATIS★  
351.675  
CLNC DEL  
126.4 254.325  
GND CON  
121.675 279.575  
NAVY FORT WORTH TOWER★  
120.95 269.325  
REGIONAL DEP CON  
125.8 257.95

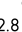
### TAKEOFF MINIMUMS

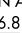
Refer to appropriate military service directives.

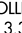
MAVERICK  
113.1 TTT   
Chan 78  
N32°52.15'  
W97°02.43'

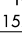
WACO  
115.3 ACT   
Chan 100  
N31°39.73'  
W97°16.14'  
L-19, H-6

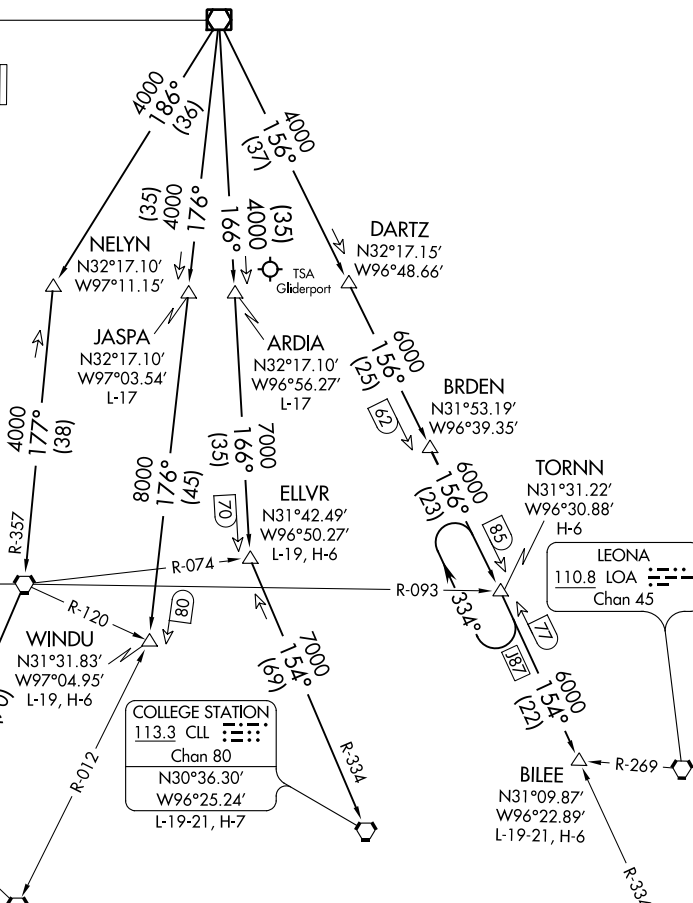
HOARY  
N30°34.63'  
W97°46.52'  
L-19-21, H-7

CENTEX  
112.8 CWK   
Chan 75

SAN ANTONIO  
116.8 SAT   
Chan 115  
N29°38.64'-W98°27.68'  
L-19, H-7

COLLEGE STATION  
113.3 CLL   
Chan 80  
N30°36.30'  
W96°25.24'  
L-19-21, H-7

NAVASOTA  
115.9 TNV   
Chan 106



NOTE: RADAR and DME required.

(NARRATIVE ON FOLLOWING PAGE)

NOTE: Chart not to scale.

SC-2, 25 MAR 2021 to 22 APR 2021

SC-2, 25 MAR 2021 to 22 APR 2021

# JOE POOL TWO DEPARTURE