

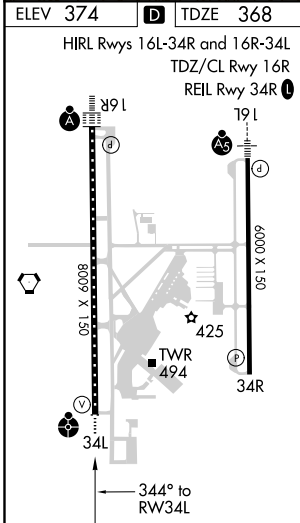
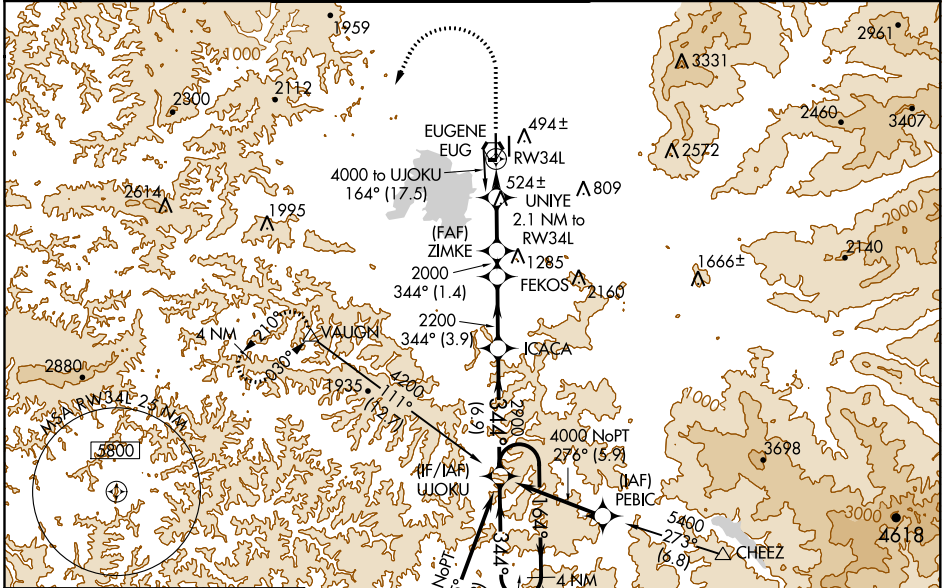
WAAS CH 45600 W34A	APP CRS 344°	Rwy Idg TDZE Apt Elev	8009 368 374
--	------------------------	-----------------------------	---

RNAV (GPS) Y RWY 34L

MAHLON SWEET FIELD (EUG)

RNP APCH.		EUGENE TOWER *		GND CON	CLNC DEL	UNICOM
<p>Simultaneous approach authorized. LNAV procedure NA during simultaneous operations. Use of FD or AP providing RNAV track guidance required during simultaneous operations. For uncompensated Baro-VNAV systems, LNAV/VNAV NA below -10°C or above 54°C. For inop ALS increase LNAV/VNAV visibility Cats A-B to RVR 4500. Inop table does not apply to LPV minimums.</p>		<p>118.9 (CTAF) 0 371.9 (Rwy 16R/34L) 124.15 371.9 (Rwy 16L/34R)</p>		121.7 269.5	121.7 269.5	122.95

ATIS	CASCADE APP CON *	EUGENE TOWER *	GND CON	CLNC DEL	UNICOM
125.225	119.6 348.7	118.9 (CTAF) 0 371.9 (Rwy 16R/34L) 124.15 371.9 (Rwy 16L/34R)	121.7 269.5	121.7 269.5	122.95



1500	4000	VAUGHN	UJOKU	4 NM Holding Pattern
*LNAV only		ZIMKE	FEKOS	ICACA
UNIYE 2.1 NM to RW34L		2000	2200	2900
1.1 NM to RW34L		1080	2000	344
1.1 NM		1 NM	2.9 NM	1.4 NM
3.9 NM		6.9 NM		6000
344		344		4000
GP 3.00°		TCH 53		
CATEGORY	A	B	C	D
LPV DA	568/40		200 (200-3/4)	
LNAV/VNAV DA	657/40		289 (300-3/4)	
LNAV MDA	760/40		392 (400-3/4)	
CIRCLING	820-1		1140-2 1/2	
	446 (500-1)		626 (700-1 3/4)	
	840-1		766 (800-2 1/2)	

NW-1, 25 MAR 2021 to 22 APR 2021

NW-1, 25 MAR 2021 to 22 APR 2021