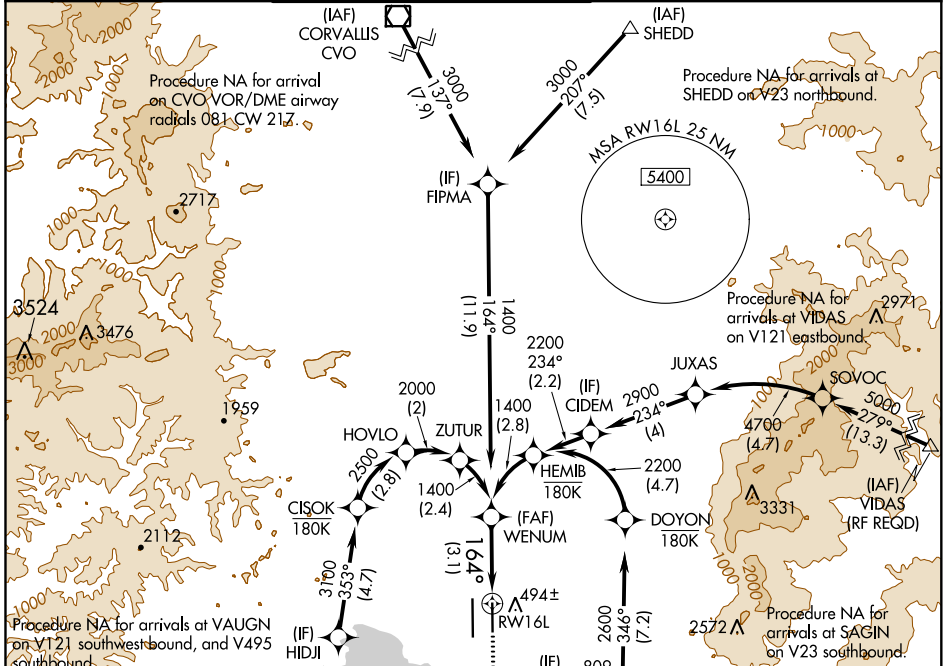


APP CRS 164°	Rwy Idg TDZE Apt Elev	6000 369 374
------------------------	-----------------------------	---

RNAV (RNP) Z RWY 16L

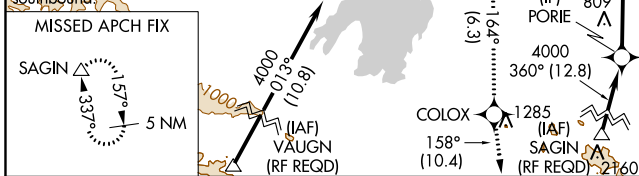
MAHLON SWEET FIELD (EUG)

RNP AR APCH.		MALSR	MISSED APPROACH: Climb to 5500 on track 164° to COLOX and on track 158° to SAGIN and hold, continue climb-in-hold to 5500.					
<p>▼ For uncompensated Baro-VNAV systems, procedure NA below -9°C or above 54°C. Simultaneous approach authorized. For inop ALS, increase RNP 0.30 all Cats visibility to 1 SM.</p>			ATIS 125.225	CASCADE APP CON ★ 119.6 348.7	EUGENE TOWER ★ 118.9 (CTAF) 0 371.9 (Rwy 16R/34L) 124.15 371.9 (Rwy 16L/34R)	GND CON 121.7 269.5	CLNC DEL 121.7 269.5	UNICOM 122.95

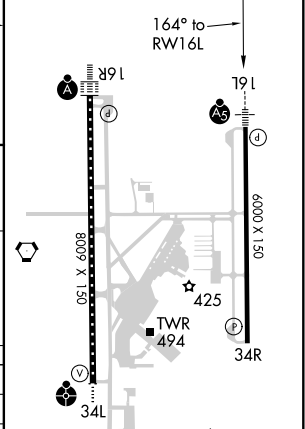
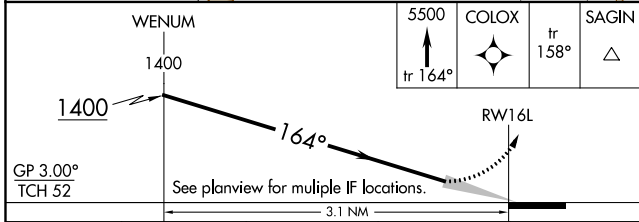


NW-1, 25 MAR 2021 to 22 APR 2021

NW-1, 25 MAR 2021 to 22 APR 2021



ELEV 374	TDZE 369
----------	----------



CATEGORY	A	B	C	D
RNP 0.10 DA		699-½	330 (400-½)	
RNP 0.30 DA		749-⅝	380 (400-⅝)	

AUTHORIZATION REQUIRED