

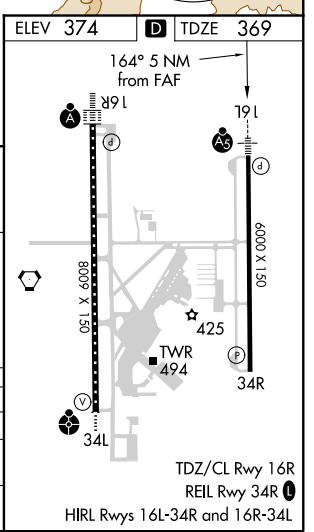
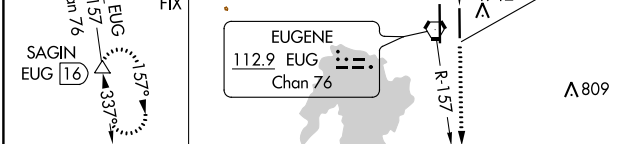
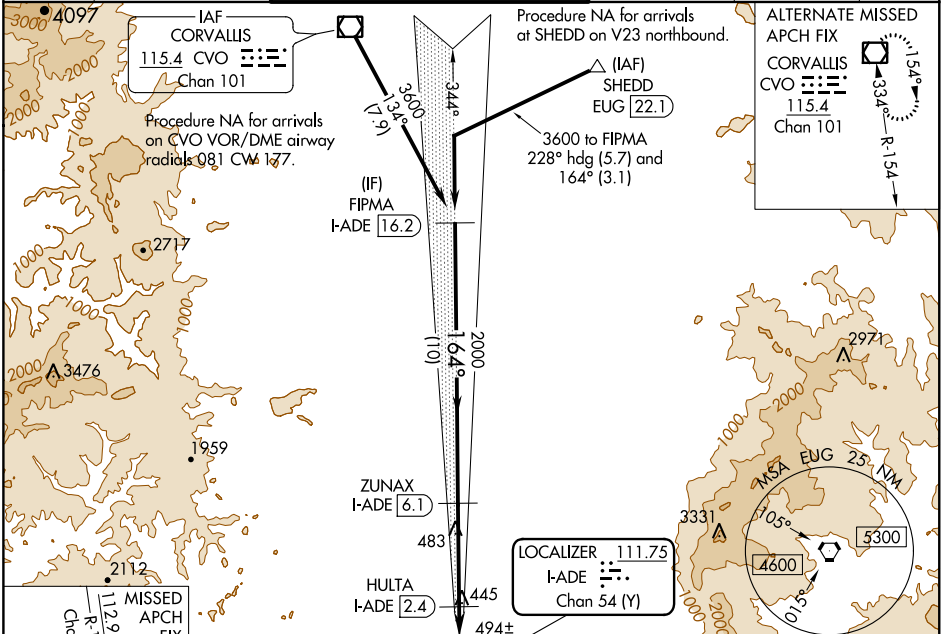
LOC/DME I-ADE 111.75 Chan 54 (Y)	APP CRS 164°	Rwy Idg TDZE Apt Elev 6000 369 374
---	------------------------	--

ILS or LOC RWY 16L

MAHLON SWEET FIELD (EUG)

DME required.		MALS R	MISSED APPROACH: Climb to 5500 on heading 164° and EUG VORTAC R-157 to SAGIN/EUG 16 DME and hold, continue climb-in-hold to 5500.
Simultaneous approach authorized.			

ATIS 125.225	CASCADE APP CON ★ 119.6 348.7	EUGENE TOWER ★ EUGENE (CTAF) 0 371.9 (Rwy 16R/34L) 124.15 371.9 (Rwy 16L/34R)	GND CON 121.7 269.5	CLNC DEL 121.7 269.5	UNICOM 122.95
------------------------	---	---	-------------------------------	--------------------------------	-------------------------



CATEGORY	A	B	C	D
S-ILS 16L		569-1/2	200 (200-1/2)	
S-LOC 16L		700-1/2	331 (400-1/2)	
CIRCLING	820-1 446 (500-1)	840-1 466 (500-1)	1000-1 3/4 626 (700-1 3/4)	1140-2 1/2 766 (800-2 1/2)

NW-1, 25 MAR 2021 to 22 APR 2021

NW-1, 25 MAR 2021 to 22 APR 2021