

LOC I-UEK 109.1	APP CRS 062°	Rwy ldg TDZE Apt Elev	7401 944 955
---------------------------	------------------------	-----------------------------	---

ILS or LOC RWY 6

ELMIRA/CORNING RGNL (ELM)


RADAR required to define JOKEN, CONAC. RNAV 1-GPS required for procedure entry. RNAV 1-GPS required from MAP to IREKE.

⚠ Inop table does not apply to S-LOC 6 Cats C/D. Circling NA to Rwy 5 and 23. Circling NA for Cat D south of Rwy 10 and 28. Circling Rwy 10 NA at night. For inop ALS, increase S-LOC 6 CONAC fix minimums Cats C/D visibility to 2½ SM.

❄ -17°C

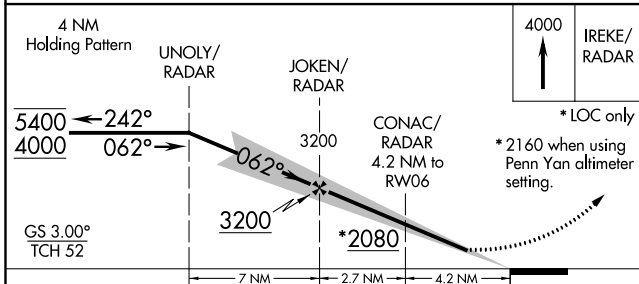
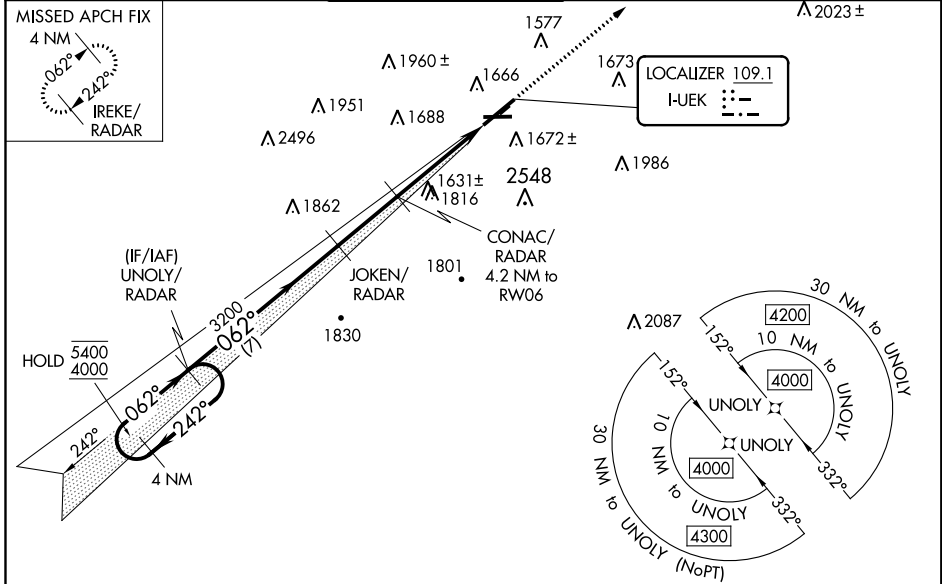
** RVR 1800 authorized with use of FD or AP or HUD to DA.

MALSRL



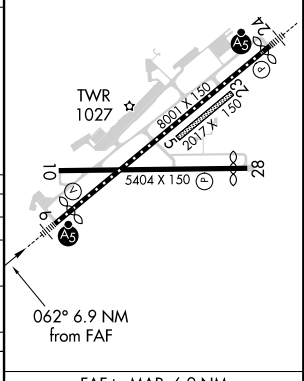
MISSED APPROACH:
Climb to 4000 direct IREKE/RADAR and hold.

ATIS 125.475	ELMIRA APP CON * 128.425 257.8	ELMIRA TOWER * 121.1 (CTAF) 0 257.8	GND CON 121.9	CLNC DEL 121.9	UNICOM 122.95
------------------------	--	---	-------------------------	--------------------------	-------------------------



ELEV 955	D TDZE 944
----------	-------------------

HIRL Rwy 6-24
MIRL Rwy 10-28



CATEGORY	A	B	C	D
S-ILS 6**	1144/24 200 (200-½)			
S-LOC 6	2080/40 1136 (1200-¾)	2080/55 1136 (1200-1)	2080-3	1136 (1200-3)
C CIRCLING	2080-1¼ 1125 (1200-1¼)	2080-1½	2100-3 1145 (1200-3)	2340-3 1385 (1400-3)
CONAC FIX MINIMUMS				
S-LOC 6	1740/24 796 (800-½)	1740/40 796 (800-¾)	1740-1¾	796 (800-1¼)
C CIRCLING	2020-1¼ 1065 (1100-1¼)	2080-1½	2100-3 1145 (1200-3)	2340-3 1385 (1400-3)

FAF to MAP 6.9 NM					
Knots	60	90	120	150	180
Min:Sec	6:54	4:36	3:27	2:46	2:18

NE-2, 25 MAR 2021 to 22 APR 2021

NE-2, 25 MAR 2021 to 22 APR 2021