

WAAS CH 93704 W32A	APP CRS 318°	Rwy Idg TDZE Apt Elev	8496 382 401
--	------------------------	-----------------------------	---

RNAV (GPS) RWY 32

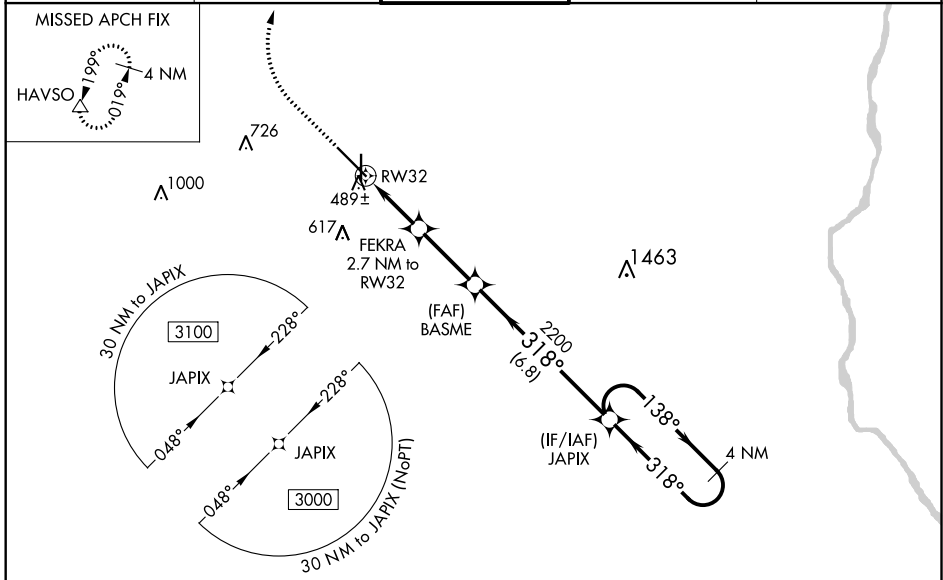
DOTHAN RGNL (DHN)

For uncompensated Baro-VNAV systems, LNAV/VNAV NA below -15°C (5°F) or above 41°C (105°F).
DME/DME RNP-0.3 NA.
**RVR 1800 authorized with use of FD or AP or HUD to DA.

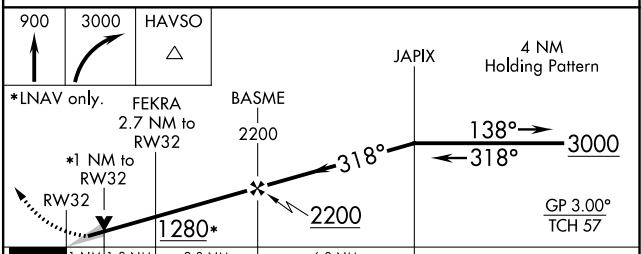
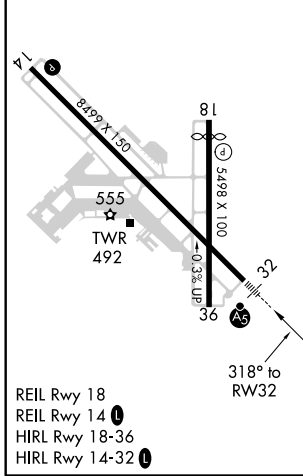
MALSRL

MISSED APPROACH: Climb to 900 then climbing right turn to 3000 direct HAVSO and hold.

ATIS 135.725	CAIRNS APP CON * 125.4 327.125	DOTHAN TOWER* 118.4 (CTAF) 0 257.6	GND CON 121.7 348.6	UNICOM 122.95
------------------------	--	---	-------------------------------	-------------------------



ELEV 401	D	TDZE 382
----------	----------	----------



CATEGORY	A	B	C	D
LPV DA**	582/24 200 (200-½)			
LNAV/VNAV DA	670/24 288 (300-½)			
LNAV MDA	740/24	358 (400-½)	740/30	358 (400-¾)
C CIRCLING	860-1	459 (500-1)	920-1½ 519 (600-1½)	1040-2 639 (700-2)

SE-4, 25 MAR 2021 to 22 APR 2021

SE-4, 25 MAR 2021 to 22 APR 2021