

WAAS CH <b>86504</b> <b>W14A</b>	APP CRS <b>138°</b>	Rwy Idg <b>8496</b> TDZE <b>401</b> Apt Elev <b>401</b>
--	------------------------	---

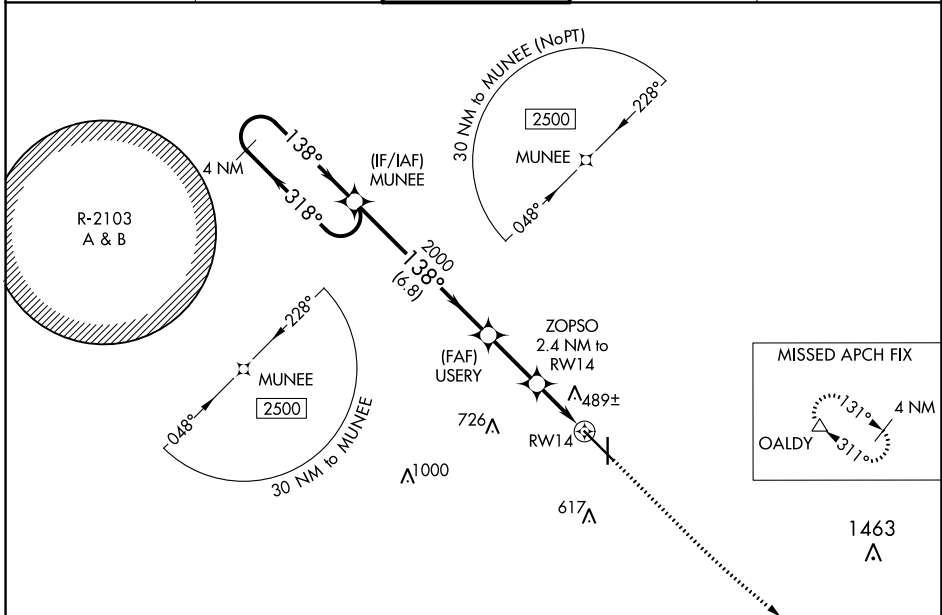
# RNAV (GPS) RWY 14

DOTHAN RGNL (DHN)

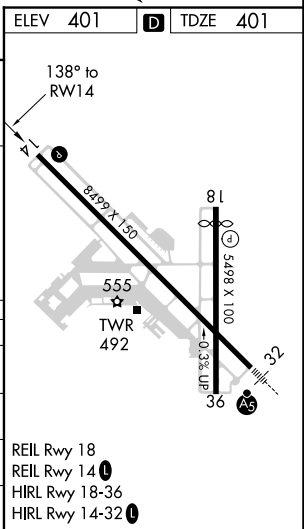
**▽** For uncompensated Baro-VNAV systems, LNAV/VNAV NA below -15°C (5°F) or above 41°C (105°F). DME/DME RNP-0.3 NA. Intense student helicopter pilot training in/ov airport.

**MISSED APPROACH:** Climb to 900 then climbing left turn to 3000 direct OALDY and hold.

ATIS <b>135.725</b>	CAIRNS APP CON * <b>125.4 327.125</b>	<b>DOTHAN TOWER *</b> <b>118.4 (CTAF) 0 257.6</b>	GND CON <b>121.7 348.6</b>	UNICOM <b>122.95</b>
------------------------	--	--	-------------------------------	-------------------------



4 NM Holding Pattern		VGSIs and RNAV glidepath not coincident (VGSi Angle 3.00/TCH 40).		900	3000	OALDY
MUNEE		USERY		*LNAV only.		
2500 ← 318°		2000		ZOPSO 2.4 NM to RWY 14		
138° →		138°		*0.9 NM to RWY 14		
GP 3.00° TCH 54		2000		RWY 14		
← 6.8 NM		← 2.5 NM		← 1.5 NM		
				← 0.9 NM		
CATEGORY	A	B	C	D		
LPV DA	601-¾		200 (200-¾)			
LNAV/VNAV DA	724-1		323 (400-1)			
LNAV MDA	820-1	419 (500-1)	820-1½	419 (500-1½)		
<b>C</b> CIRCLING	860-1	459 (500-1)	920-1½	1040-2		
			519 (600-1½)	639 (700-2)		



SE-4, 25 MAR 2021 to 22 APR 2021

SE-4, 25 MAR 2021 to 22 APR 2021