


WAAS CH <b>69202</b> <b>W05A</b>	APP CRS <b>053°</b>	Rwy Idg <b>9004</b> TDZE <b>931</b> Apt Elev <b>958</b>
--	------------------------	---

# RNAV (GPS) RWY 5

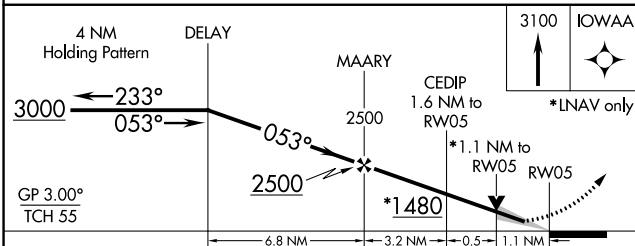
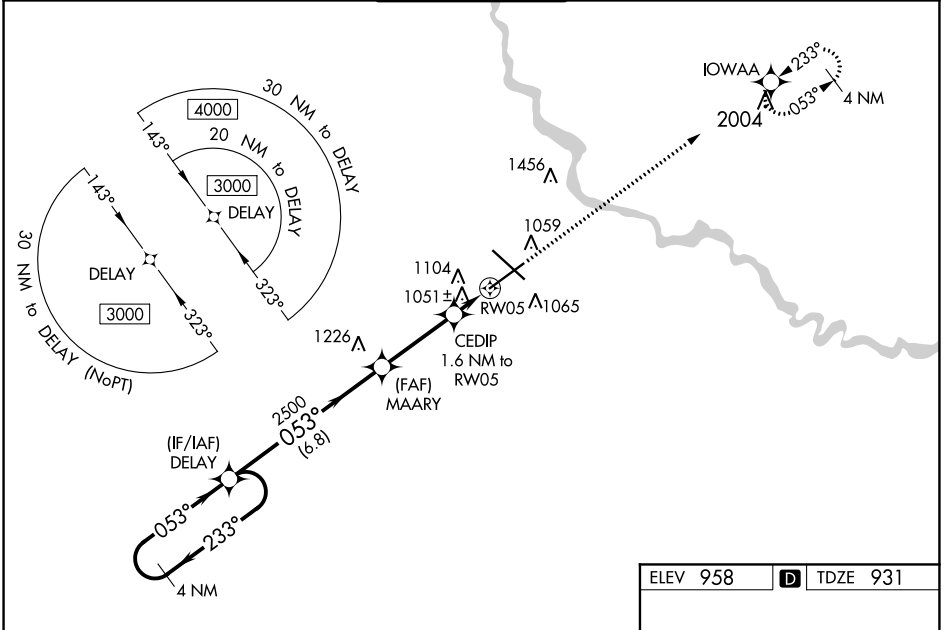
DES MOINES INTL (DSM)

**⚠** For uncompensated Baro-VNAV systems, LNAV/VNAV NA below -19°C (-2°F) or above 54°C (130°F). DME/DME RNP-0.3 NA.  
**⚠** For inop MALSR, increase LPV all Cats visibility to RVR 4000 feet, LNAV/VNAV all Cats visibility to 1 1/2 miles, LNAV Cats A and B visibilities to RVR 5500 feet, and LNAV Cats C and D visibilities to RVR 6000 feet.  
 # RVR 1800 authorized with use of FD or AP or HUD to DA.

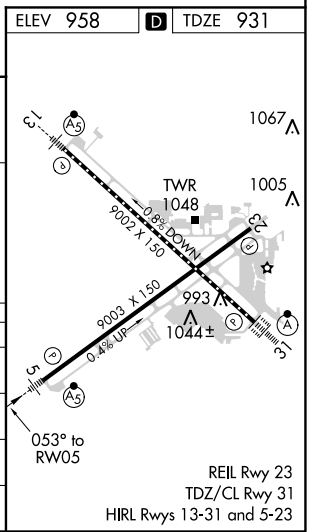
MALSR 

MISSED APPROACH: Climb to 3100 direct IOWAA and hold.

ATIS <b>119.55</b>	DES MOINES APP CON <b>123.9 307.15</b>	DES MOINES TOWER <b>118.3 257.8</b>	GND CON <b>121.9 348.6</b>	CLNC DEL <b>134.15 317.55</b>
-----------------------	---	--	-------------------------------	----------------------------------



CATEGORY	A	B	C	D
LPV DA #		1131/24	200 (200-1/2)	
LNAV/VNAV DA		1352/40	421 (400-3/4)	
LNAV MDA	1320/24	389 (400-1/2)	1320/35	389 (400-5/8)
<b>C</b> CIRCLING	1420-1	462 (500-1)	1600-1 3/4 642 (700-1 3/4)	1760-2 1/2 802 (900-2 1/2)



NC-3, 25 MAR 2021 to 22 APR 2021

NC-3, 25 MAR 2021 to 22 APR 2021