


WAAS CH 78002 W31A	APP CRS 311°	Rwy Idg TDZE 958 Apt Elev 958	9001
--	------------------------	---	-------------

RNAV (GPS) RWY 31

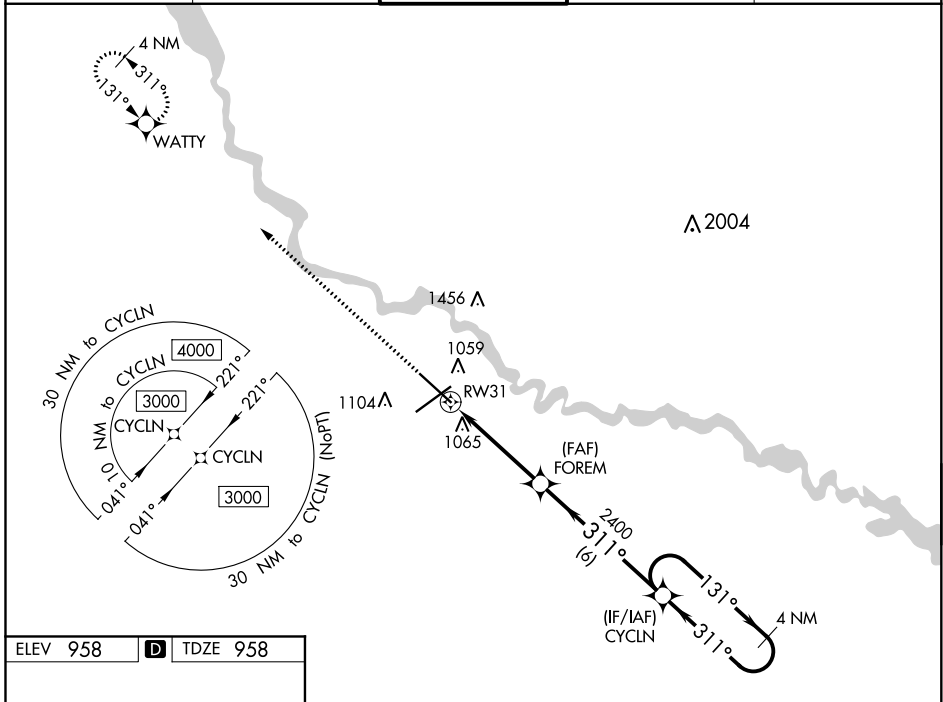
DES MOINES INTL (DSM)

⚠ For uncompensated Baro-VNAV systems, LNAV/VNAV NA below -20°C (-4°F) or above 54°C (130°F). DME/DME RNP-0.3 NA. For inop ALS, increase LNAV Cats C/D visibility to RVR 5500.

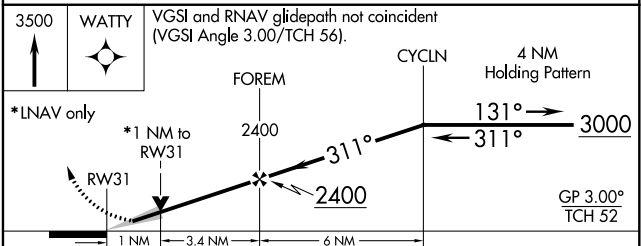
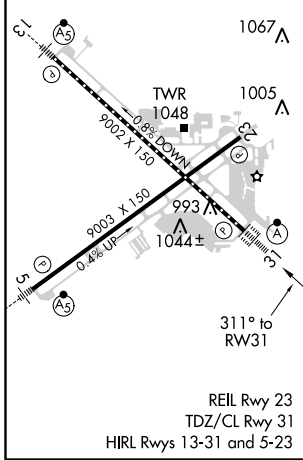
ALSF-2 

MISSED APPROACH: Climb to 3500 direct WATTY and hold.

ATIS 119.55	DES MOINES APP CON 123.9 307.15	DES MOINES TOWER 118.3 257.8	GND CON 121.9 348.6	CLNC DEL 134.15 317.55
-----------------------	---	--	-------------------------------	----------------------------------



ELEV 958	D	TDZE 958
----------	----------	----------



CATEGORY	A	B	C	D
LPV DA	1158/18 200 (200-½)			
LNAV/VNAV DA	1354/35 396 (400-⅝)			
LNAV MDA	1320/24	362 (400-½)	1320/35	362 (400-⅝)
C CIRCLING	1420-1	462 (500-1)	1600-1¾ 642 (700-1¾)	1760-2½ 802 (900-2½)

NC-3, 25 MAR 2021 to 22 APR 2021

NC-3, 25 MAR 2021 to 22 APR 2021