

WAAS CH <b>97541</b> <b>W23A</b>	APP CRS <b>233°</b>	Rwy Idg TDZE Apt Elev	<b>9004</b> <b>939</b> <b>958</b>
--	------------------------	-----------------------------	---

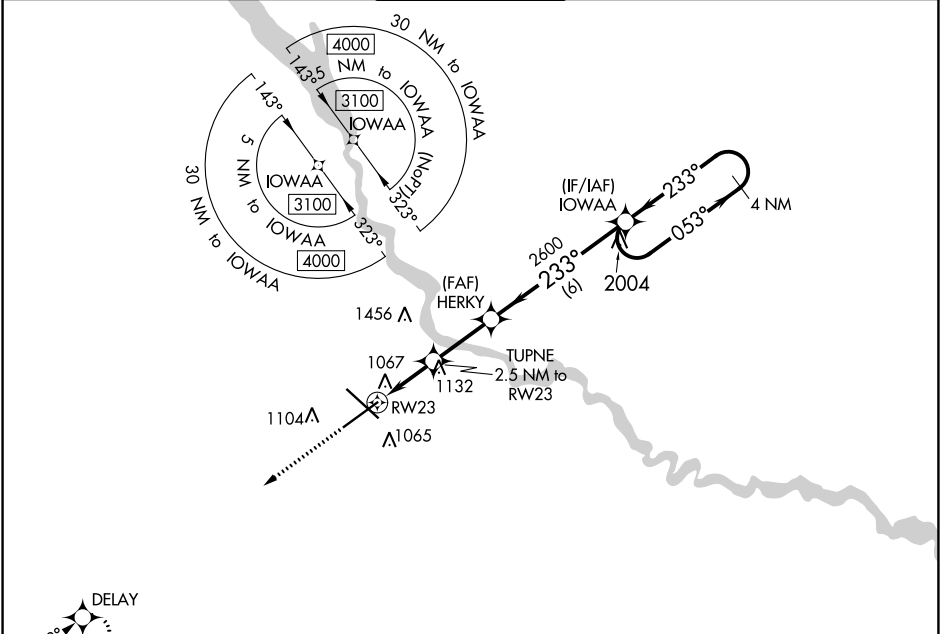
# RNAV (GPS) RWY 23

DES MOINES INTL (DSM)

**▼** For uncompensated Baro-VNAV systems, LNAV/VNAV NA below -19°C (-2°F) or above 54°C (130°F). Rwy 23 helicopter visibility reduction below ¾ SM NA. DME/DME RNP-0.3 NA.

**▲** MISSED APPROACH: Climb to 3000 direct DELAY and hold.

ATIS <b>119.55</b>	DES MOINES APP CON <b>123.9 307.15</b>	DES MOINES TOWER <b>118.3 257.8</b>	GND CON <b>121.9 348.6</b>	CLNC DEL <b>134.15 317.55</b>
-----------------------	---	--	-------------------------------	----------------------------------



NC-3, 25 MAR 2021 to 22 APR 2021

NC-3, 25 MAR 2021 to 22 APR 2021

**DELAY** 053° 233° 4 NM

**3000 DELAY**

**\*LNAV only**

RW23 1 NM to RW23 | 1.5 NM to RW23 | 2.6 NM to HERKY | 6 NM to TUPNE | 4 NM Holding Pattern to IOWAA

Altitudes: 1780\* (at 1.5 NM), 2600 (at 2.6 NM), 3100 (at 4 NM)

Headings: 233° (initial), 053° (holding)

GP 3.00° TCH 56

CATEGORY	A	B	C	D
LPV DA	1262-1 323 (400-1)			
LNAV/VNAV DA	1242-7/8 303 (300-7/8)			
LNAV MDA	1320-1 381 (400-1)		1320-1 1/8 381 (400-1 1/8)	
<b>C</b> CIRCLING	1420-1 462 (500-1)		1600-1 3/4 642 (700-1 3/4)	1760-2 1/2 802 (900-2 1/2)

