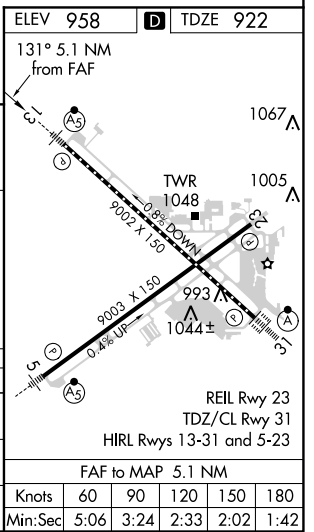
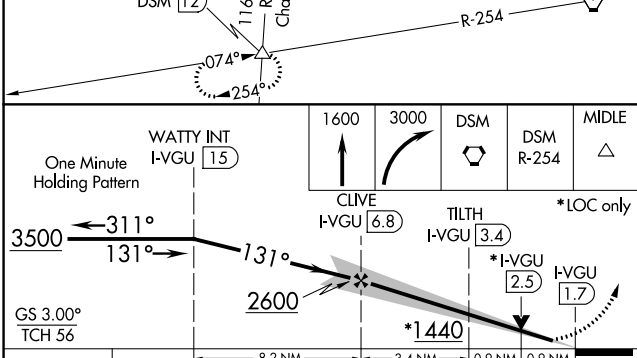
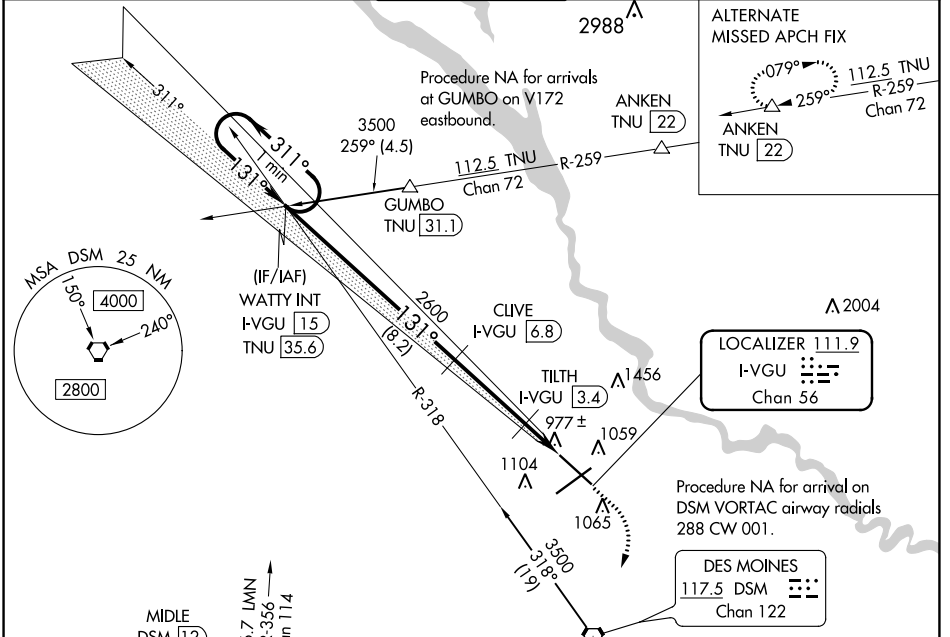


LOC/DME I-VGU <b>111.9</b> Chan <b>56</b>	APP CRS <b>131°</b>	Rwy Idg TDZE <b>922</b> Apt Elev <b>958</b>	<b>9001</b> <b>922</b> <b>958</b>
---	------------------------	---	---

**ILS or LOC RWY 13**  
DES MOINES INTL (DSM)

<p><b>V</b> DME required. For inop ALS, increase S-LOC 13 Cots C/D visibility to RVR 4500. #RVR 1800 authorized with use of FD or AP or HUD to DA.</p>	<p>MALSR </p>	<p>MISSED APPROACH: Climb to 1600 then climbing right turn to 3000 direct DSM VORTAC then on DSM VORTAC R-254 to MIDDLE INT/DSM 12 DME and hold.</p>
--	-------------------	--

ATIS <b>119.55</b>	DES MOINES APP CON <b>123.9 307.15</b>	DES MOINES TOWER <b>118.3 257.8</b>	GND CON <b>121.9 348.6</b>	CLNC DEL <b>134.15 317.55</b>
-----------------------	---	--	-------------------------------	----------------------------------



CATEGORY	A	B	C	D
S-ILS 13#	1122/24		200 (200-½)	
S-LOC 13	1240/24		318 (300-½)	
<b>C</b> CIRCLING	1420-1	462 (500-1)	1600-1¾ 642 (700-1¾)	1760-2½ 802 (900-2½)

NC-3, 25 MAR 2021 to 22 APR 2021

NC-3, 25 MAR 2021 to 22 APR 2021