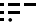
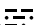



LAMMA SEVEN DEPARTURE

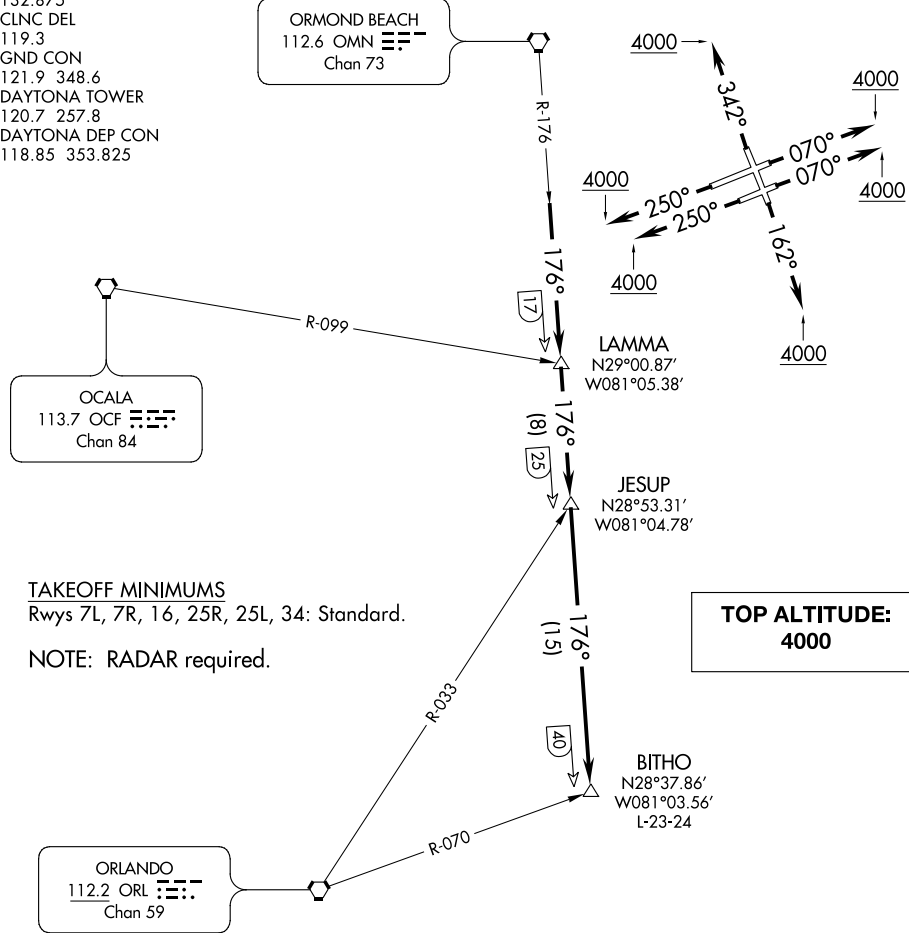
ATIS
132.875
CLNC DEL
119.3
GND CON
121.9 348.6
DAYTONA TOWER
120.7 257.8
DAYTONA DEP CON
118.85 353.825

ORMOND BEACH
112.6 OMN 
Chan 73

OCALA
113.7 OCF 
Chan 84

TAKEOFF MINIMUMS
Rwys 7L, 7R, 16, 25R, 25L, 34: Standard.
NOTE: RADAR required.

ORLANDO
112.2 ORL 
Chan 59



NOTE: Chart not to scale.

DEPARTURE ROUTE DESCRIPTION

- TAKEOFF RUNWAY 7L:** Climb heading 070° to 4000 or as assigned by ATC, thence . . .
- TAKEOFF RUNWAY 7R:** Climb heading 070° to 4000 or as assigned by ATC, thence . . .
- TAKEOFF RUNWAY 16:** Climb heading 162° to 4000 or as assigned by ATC, thence . . .
- TAKEOFF RUNWAY 25R:** Climb heading 250° to 4000 or as assigned by ATC, thence . . .
- TAKEOFF RUNWAY 25L:** Climb heading 250° to 4000 or as assigned by ATC, thence . . .
- TAKEOFF RUNWAY 34:** Climb heading 342° to 4000 or as assigned by ATC, thence . . .

. . . Expect vectors to intercept OMN R-176 to BITHO INT/OMN 40 DME, then via assigned route. Expect clearance to filed altitude. Flight level ten (10) minutes after departure.

LAMMA SEVEN DEPARTURE

SE-3, 25 MAR 2021 to 22 APR 2021

SE-3, 25 MAR 2021 to 22 APR 2021