

LOC I-DAB	APP CRS	Rwy Idg	<b>9810</b>
<b>109.7</b>	<b>070°</b>	TDZE	<b>30</b>
		Apt Elev	<b>34</b>

# ILS or LOC RWY 7L

## DAYTONA BEACH INTL (DAB)

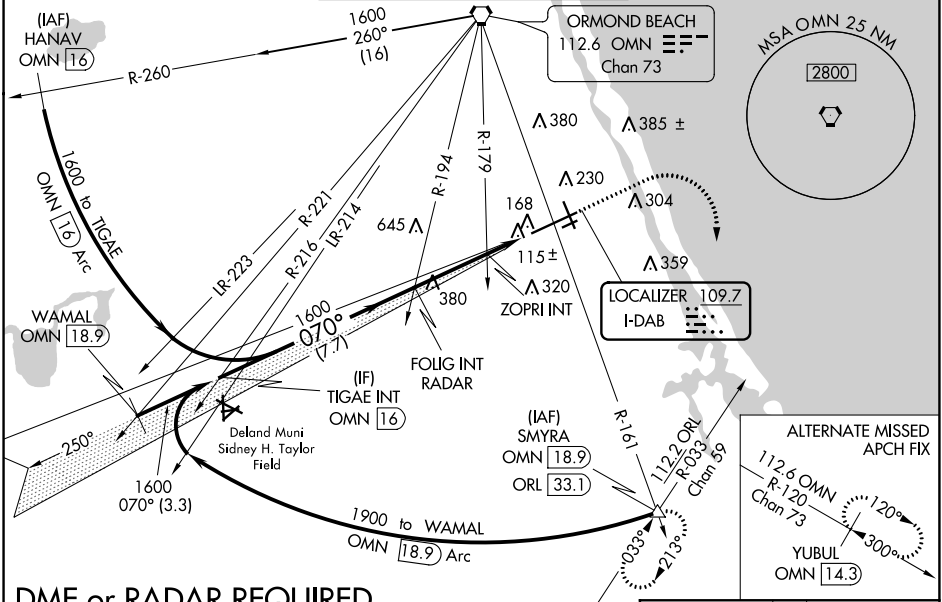
**⚠** Inoperative table does not apply to S-ILS 07L. Helicopter visibility reduction below RVR 4000 NA. For inop MALSR, increase S-LOC 07L Cat A and B and ZOPRI fix minimums S-LOC 07L all Cats visibility to RVR 5500. Autopilot coupled approach NA below 535.

MALSR



**MISSED APPROACH:** Climb to 700 then climbing right turn to 3000 on heading 175° and ORL VORTAC R-033 to SMYRA/ORL 33.1 DME and hold.

ATIS	DAYTONA APP CON	DAYTONA TOWER	GND CON	CLNC DEL
<b>132.875</b>	<b>125.8 269.075</b>	<b>118.1 257.8</b> (Rwy 7R-25L) <b>120.7 257.8</b> (Rwys 7L-25R, 16-34)	<b>121.9 348.6</b>	<b>119.3</b>



SE-3, 25 MAR 2021 to 22 APR 2021

SE-3, 25 MAR 2021 to 22 APR 2021

**DME or RADAR REQUIRED**

ELEV 34		TDZE 30	
WAMAL OMN 18.9		*LOC only.	
TIGAE INT OMN 16		FOLIG INT RADAR	
1900 070°		ZOPRI INT	
GS 3.00° TCH 57		*680	
3.3 NM		7.7 NM	
2.9 NM		1.9 NM	
CATEGORY	A	B	C
S-ILS 07L	230/40		200 (200-¾)
S-LOC 07L	680/40	650 (700-¾)	680-1⅞ 650 (700-1⅞)
CIRCLING	680-1	646 (700-1)	646 (700-1⅞) 666 (700-2)
ZOPRI FIX MINIMUMS (DUAL VOR RECEIVERS REQUIRED)			
S-LOC 07L	380/40		350 (400-¾)
CIRCLING	540-1	506 (600-1)	680-1¼ 666 (700-2)

ORL R-033 SMYRA INT

hdg 175°

TWR 149

3195 X 100

070° 4.8 NM from FAF

TDZ/CL Rwy 7L HIRL Rwy 7L-25R MIRL Rwys 7R-25L and 16-34 REIL Rwys 7R, 16, 25L and 34

FAF to MAP 4.8 NM

Knots	60	90	120	150	180
Min:Sec	4:48	3:12	2:24	1:55	1:36