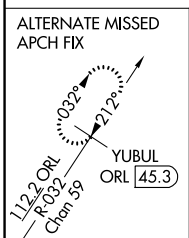
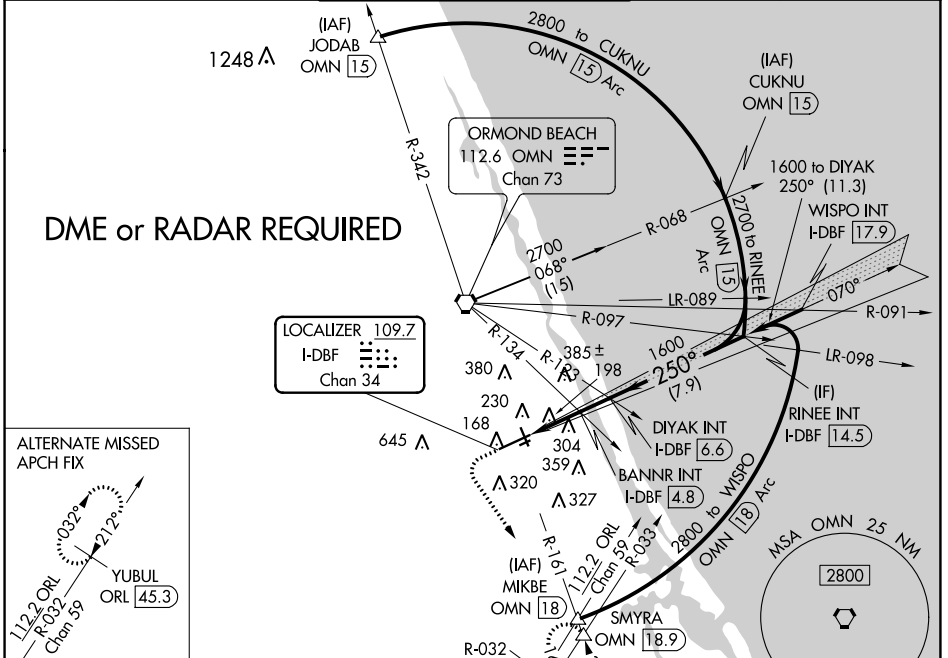


LOC/DME I-DBF 109.7 Chan 34	APP CRS 250°	Rwy Idg TDZE Apt Elev	10293 34 34
--	------------------------	-----------------------------	--

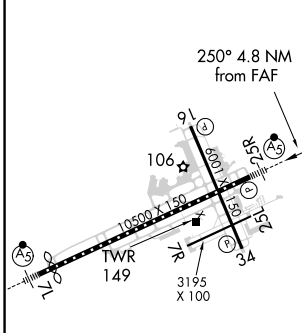
ILS or LOC RWY 25R

DAYTONA BEACH INTL (DAB)

A	MALSR	MISSED APPROACH: Climb to 500 then climbing left turn to 3000 on heading 150° and OMN VORTAC R-161 to SMYRA INT/OMN 18.9 DME and hold, continue climb-in-hold to 3000.	
	ATIS 132.875	DAYTONA APP CON 125.8 269.075	DAYTONA TOWER 118.1 257.8 (Rwy 7R-25L) 120.7 257.8 (Rwys 7L-25R, 16-34)
GND CON 121.9 348.6		CLNC DEL 119.3	



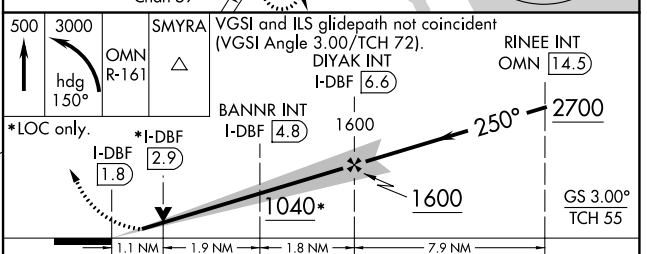
ELEV 34	D	TDZE 34
---------	----------	---------



TDZ/CL Rwy 7L
HIRL Rwy 7L-25R
MIRL Rwys 7R-25L and 16-34
REIL Rwys 7R, 16, 25L and 34

FAF to MAP 4.8 NM

Knots	60	90	120	150	180
Min:Sec	4:48	3:12	2:24	1:55	1:36



CATEGORY	A	B	C	D
S-ILS 25R	234-1/2		200 (200-1/2)	
S-LOC 25R	1040-3/4 1006 (1100-3/4)	1040-1 1006 (1100-1)	1040-2 1/2	1006 (1100-2 1/2)
C CIRCLING	1040-1 1/4 1006 (1100-1 1/4)	1040-1 1/2 1006 (1100-1 1/2)	1040-3	1006 (1100-3)
BANNR FIX MINIMUMS (DUAL VOR RECEIVERS or DME REQUIRED)				
S-LOC 25R	440-1/2	406 (500-1/2)	440-3/4	406 (500-3/4)
C CIRCLING	540-1	506 (600-1)	680-1 1/4 646 (700-1 1/4)	700-2 666 (600-2)

SE-3, 25 MAR 2021 to 22 APR 2021

SE-3, 25 MAR 2021 to 22 APR 2021