

DAYTON, OHIO

TACAN RWY 5L

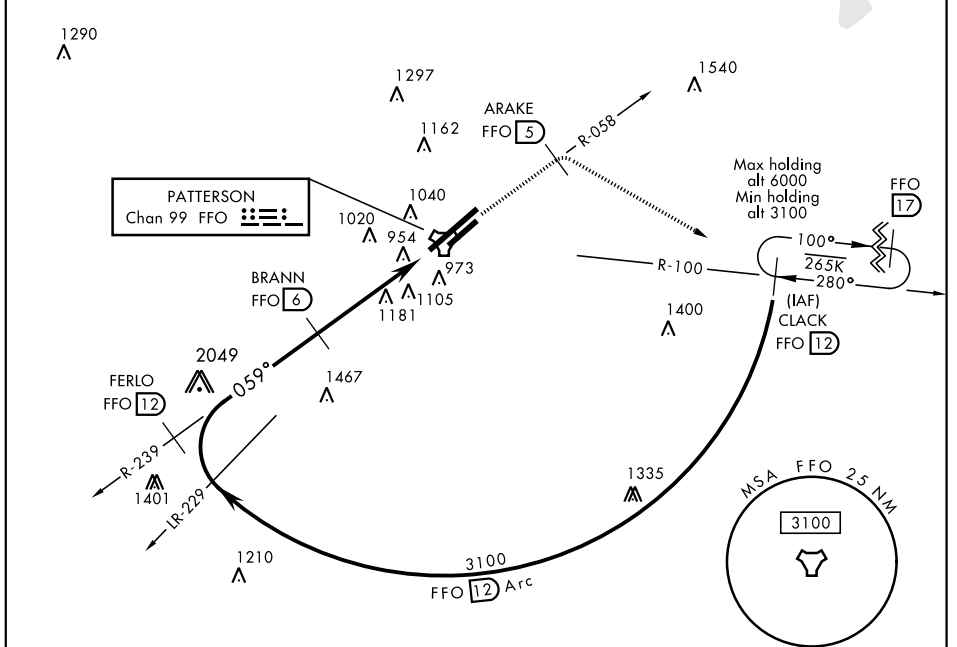
TACAN FFO Chan 99	APCH CRS 059°	Rwy ldg 12,600 TDZE 803 Arprt Elev 823	AL-108 [USAF]	WRIGHT-PATTERSON AFB (KFFO)
-----------------------------	-------------------------	---	---------------	-----------------------------

▼ * When ALS inop, increase RVR CAT AB to 55 and vis to 1 mile, CAT CDE vis to 1¾ miles.
** When Rwy 23R VGSI inop, circling to Rwy 23R NA at night.

ALSF-1
† MISSED APPROACH: Climb to 2000 via FFO R-058 to 5 DME, turn right direct CLACK climbing to 3100 and hold.

ATIS 124.475 269.9	COLUMBUS APP CON 118.85 269.275	PATTERSON TOWER 126.9 281.45	GND CON 121.8 335.8
------------------------------	---	--	-------------------------------

† Missed approach requires use of RNAV or ATC radar monitoring.



EC-2, 25 MAR 2021 to 22 APR 2021

EC-2, 25 MAR 2021 to 22 APR 2021

EMERG SAFE ALT 100 NM 3700

	2000 FFO R-058 ARAKE FFO 5 3100 CLACK FFO 12	ELEV 823	TDZE 803			
	BRANN 6 2.2 BOXEY 1 TACAN BRANN to RW5L 3.00° TCH 51					
CATEGORY	A	B	C	D	E	
S-5L *	1400/24	597 (600-½)	1400-1¼	597 (600-1¼)		
CIRCLING **	1400-1 577 (600-1)	1440-1 617 (700-1)	1560-2 737 (800-2)	1620-2½ 797 (800-2½)	1620-2¾ 797 (800-2¾)	HIRL Rwy 5L-23R MIRL Rwy 5R-23L

DAYTON, OHIO
Amdt 7 05JAN17

39° 50'N-84° 03'W

WRIGHT-PATTERSON AFB (KFFO)

TACAN RWY 5L