

ILS or LOC RWY 23R

LOC I-FFO 109.7	APCH CRS 233°	Rwy Ldg THRE 12,600 823 Arprt Elev 823	AL-108 [USAF]	WRIGHT-PATTERSON AFB (KFFO)
---------------------------	-------------------------	--	---------------	-----------------------------

▼ *When ALS inop, increase RVR to 40 and vis to $\frac{3}{8}$ mile.
** When ALS inop, increase CAT AB RVR to 55 and vis to 1 mile, CAT CDE vis to $\frac{1}{8}$ miles.

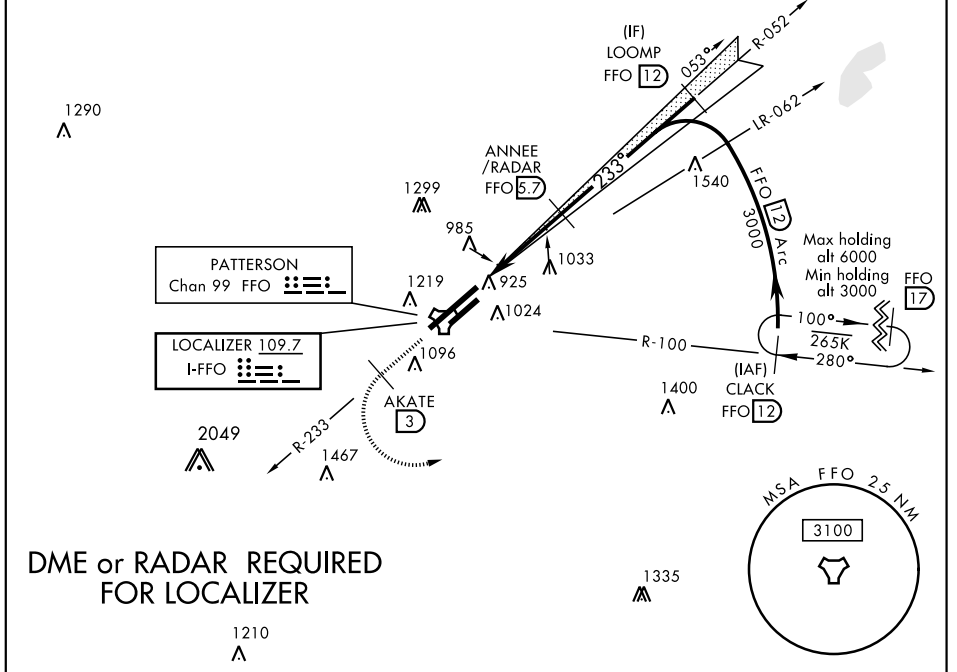


† MISSED APPROACH: Climb via FFO R-233 to 2000, at 3 DME turn left direct CLACK to 3000 and hold.

ATIS 124.475 269.9	COLUMBUS APP CON 118.85 269.275	PATTERSON TOWER 126.9 281.45	GND CON 121.8 335.8
------------------------------	---	--	-------------------------------

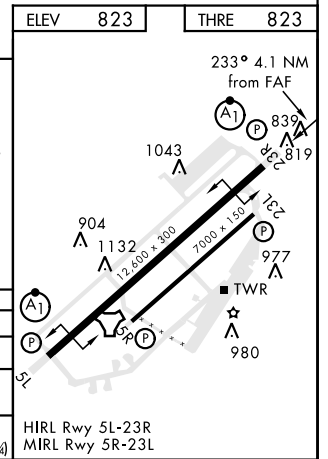
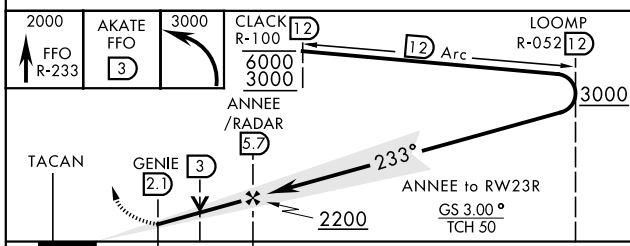
*** When Rwy 23R VGSi inop, circling to Rwy 23R NA at night.

† Missed approach requires use of RNAV or ATC radar monitoring.



DME or RADAR REQUIRED FOR LOCALIZER

EMERG SAFE ALT 100 NM 3700



CATEGORY	A	B	C	D	E
S-ILS 23R *	1023/24		200	(200-1/2)	
S-LOC 23R **	1320/24 497 (500-1/2)		1320/50 497 (500-1)		
CIRCLING ***	1380-1 557 (600-1)	1440-1 617 (600-1)	1560-2 737 (800-2)	1620-2 1/2 797 (800-2 1/2)	1620-2 3/4 797 (800-2 3/4)

HIRL Rwy 5L-23R
 MIRL Rwy 5R-23L

ILS or LOC RWY 23R

EC-2, 25 MAR 2021 to 22 APR 2021

EC-2, 25 MAR 2021 to 22 APR 2021