

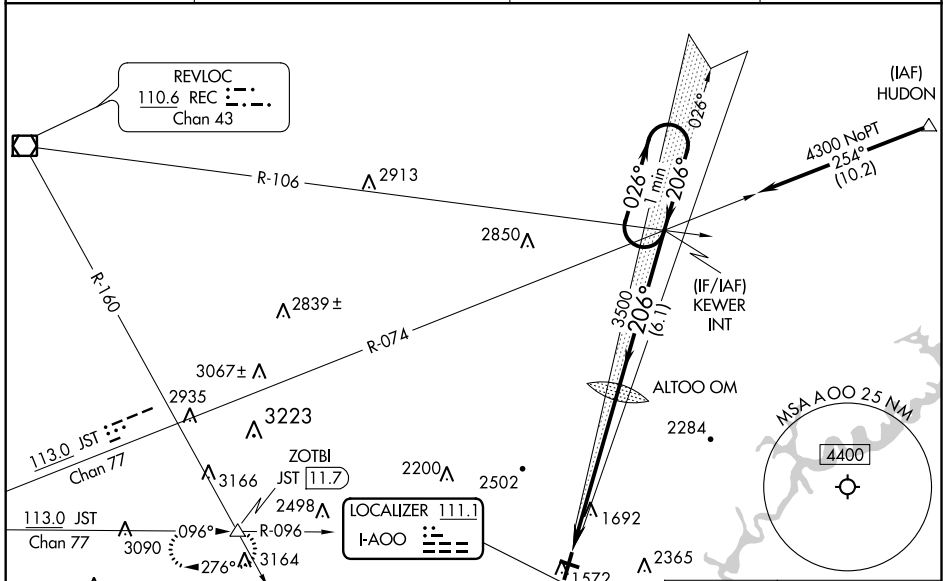
LOC I-AOO 111.1	APP CRS 206°	Rwy ldg TDZE Apt Elev	5465 1486 1503
---------------------------	------------------------	-----------------------------	---

ILS or LOC RWY 21

ALTOONA-BLAIR COUNTY (A00)

<p>⚠ Circling NA for Cats C, D northwest of Rwy 12 and 21. For inoperative ALS increase S-LOC 21 visibility Cats C and D to 2½ miles. Circling Rwy 3, 12, 30 NA at night.</p>	<p>MALSR</p>	<p>MISSED APPROACH: Climb to 2100, then climbing right turn to 5000 on heading 295° and JST R-096 to ZOTBI INT/JST 11.7 DME and hold, continue climb-in-hold to 5000.</p>	
			<p>ASOS 127.125</p>

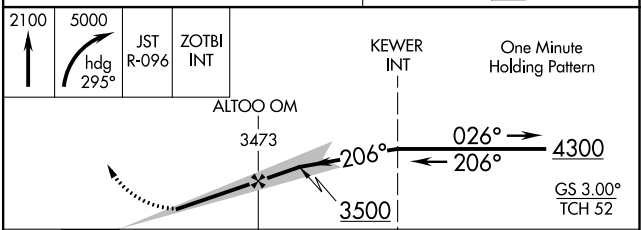
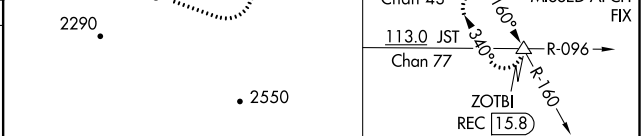
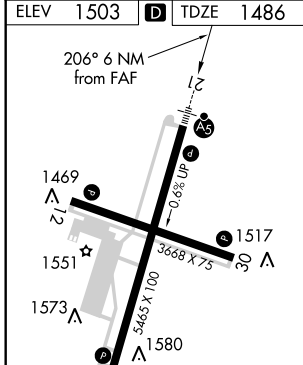
ASOS 127.125	JOHNSTOWN APP CON * 121.2 299.2	CTAF 123.60	UNICOM 123.0
------------------------	---	-----------------------	------------------------



NE-4, 25 MAR 2021 to 22 APR 2021

NE-4, 25 MAR 2021 to 22 APR 2021

ELEV 1503	D	TDZE 1486
-----------	----------	-----------



FAF to MAP 6 NM	Knots	60	90	120	150	180
Min:Sec	6:00	4:00	3:00	2:24	2:00	

CATEGORY	A	B	C	D
S-ILS 21		1686-½	200 (200-½)	
S-LOC 21	2240-½ 754 (800-½)	2240-¾ 754 (800-¾)	2240-1¼ 754 (800-1¼)	2840-3 1337 (1400-3)
C CIRCLING	2240-1 737 (800-1)	2240-1¼ 737 (800-1¼)	2800-3 1297 (1300-3)	2840-3 1337 (1400-3)