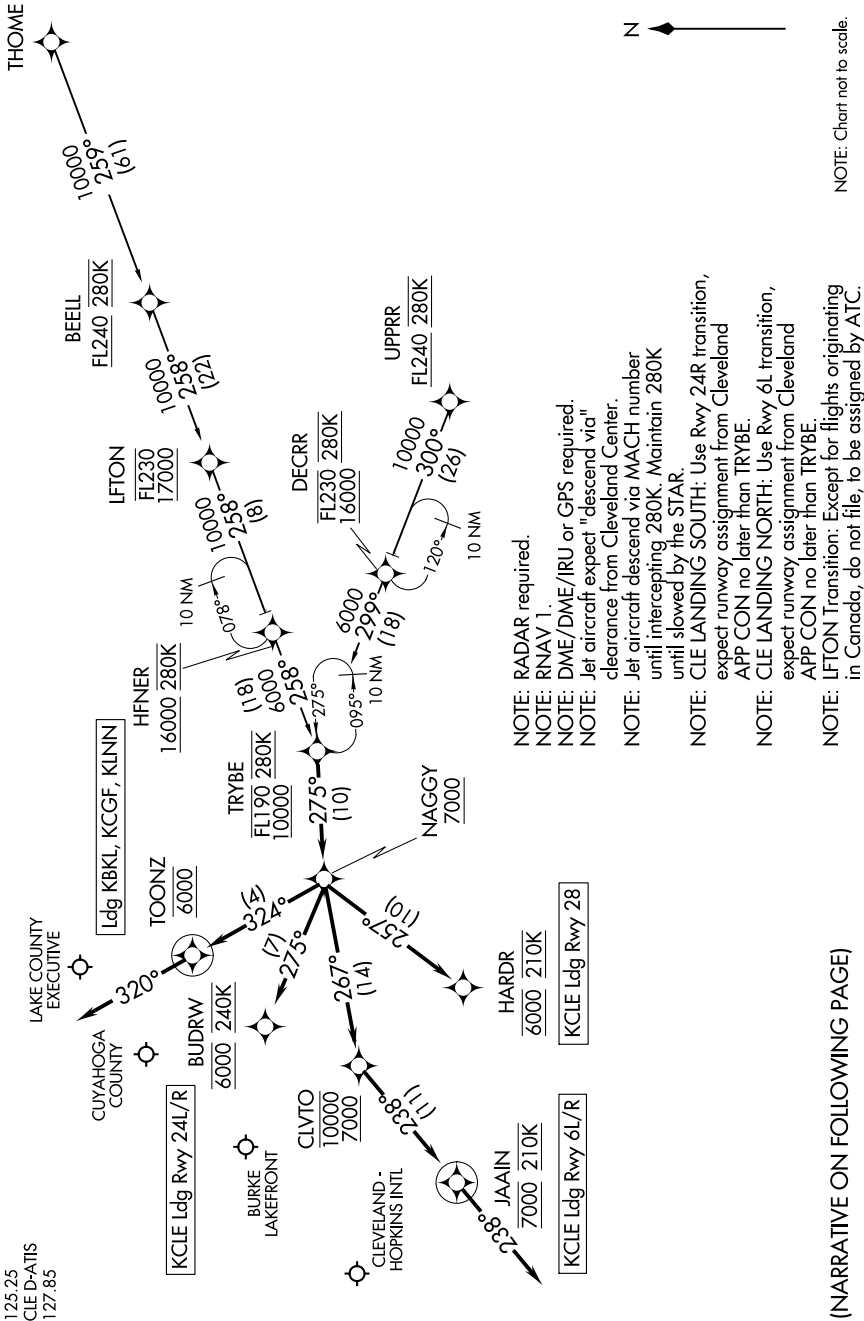


# TRYBE FOUR ARRIVAL (RNAV)

CLEVELAND, OHIO

EC-2, 25 MAR 2021 to 22 APR 2021

CLEVELAND APP CON  
 124.0 346.325  
 BKL ATIS  
 125.25  
 CLE D-ATIS  
 127.85



- NOTE: RADAR required.
- NOTE: RNAV 1.
- NOTE: DME/DME/IRU or GPS required.
- NOTE: Jet aircraft expect "descend via" clearance from Cleveland Center.
- NOTE: Jet aircraft descend via MACH number until intercepting 280K. Maintain 280K until slowed by the STAR.
- NOTE: CLE LANDING SOUTH: Use Rwy 24R transition, expect runway assignment from Cleveland APP CON no later than TRYBE.
- NOTE: CLE LANDING NORTH: Use Rwy 6L transition, expect runway assignment from Cleveland APP CON no later than TRYBE.
- NOTE: LFTON Transition: Except for flights originating in Canada, do not file, to be assigned by ATC.

(NARRATIVE ON FOLLOWING PAGE)

NOTE: Chart not to scale.

# TRYBE FOUR ARRIVAL (RNAV)

(TRYBE.TRYBE4) 26MAR20

CLEVELAND, OHIO

EC-2, 25 MAR 2021 to 22 APR 2021