

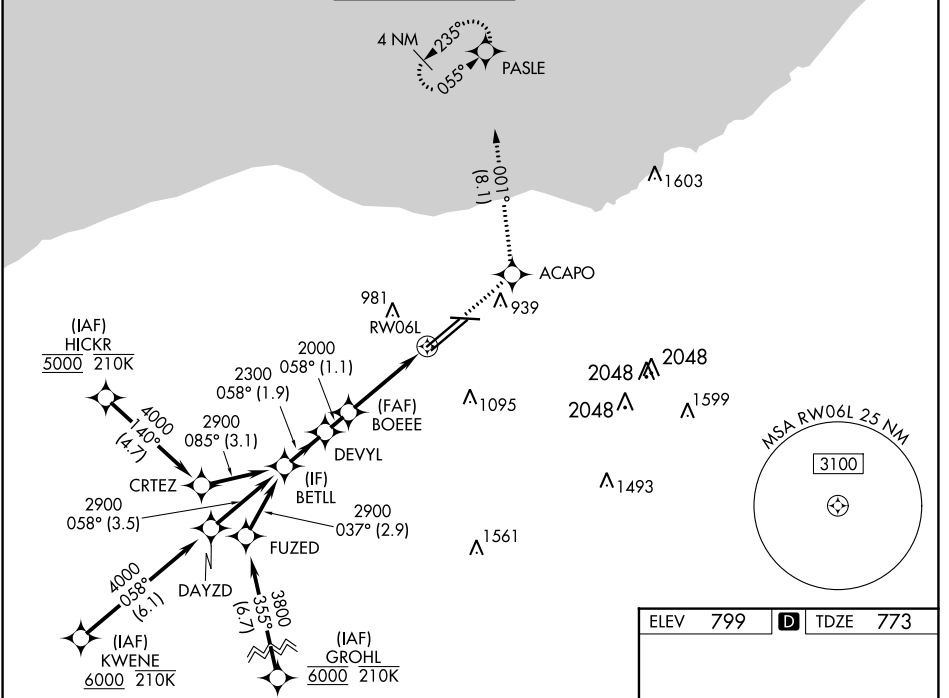
WAAS CH 56204 W06A	APP CRS 058°	Rwy Idg TDZE 773 Apt Elev 799
--	------------------------	---

RNAV (GPS) Y RWY 6L

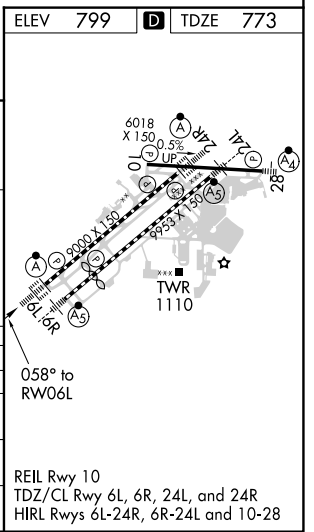
CLEVELAND-HOPKINS INTL (CLE)

RNP APCH.	ALSF-2 	MISSED APPROACH: Climb to 3000 direct ACAPO and on track 001° to PASLE and hold.
<p>▼ For uncompensated Baro-VNAV systems, LNAV/VNAV NA below -18°C (0°F) or above 54°C (130°F). Circling Rwy 10 NA at night. For inop ALS, increase LNAV/VNAV all Cats visibility to RVR 5500 and increase LNAV Cats C/D visibility to 1 3/8 SM.</p>		

D-ATIS ARR 127.85 DEP 132.375	CLEVELAND APP CON 124.0 346.325	CLEVELAND TOWER 124.5 273.45	GND CON 121.7 273.45	CLNC DEL 125.05 273.45	CPDLC
---	---	--	--------------------------------	----------------------------------	-------



VGSi and RNAV glidepath not coincident (VGSi Angle 3.00/TCH 69).		3000	ACAPO	PASLE
		↑		tr 001°
BETLL	DEVYL	BOEEE	*LNAV only.	
2900	2300	2000	*1.3 NM to RW06L	
GP 3.00° TCH 55		2000	RW06L	
1.9 NM		1.1 NM	2.4 NM	1.3 NM
CATEGORY	A	B	C	D
LPV DA	973/18		200 (200-1/2)	
LNAV/VNAV DA	1120/30		347 (400-5/8)	
LNAV MDA	1260/24 487 (500-1/2)		1260/50 487 (500-1)	
C CIRCLING	1420-1 621 (700-1)		1420-1 3/4 621 (700-1 3/4) 1420-2 621 (700-2)	



EC-2, 25 MAR 2021 to 22 APR 2021

EC-2, 25 MAR 2021 to 22 APR 2021