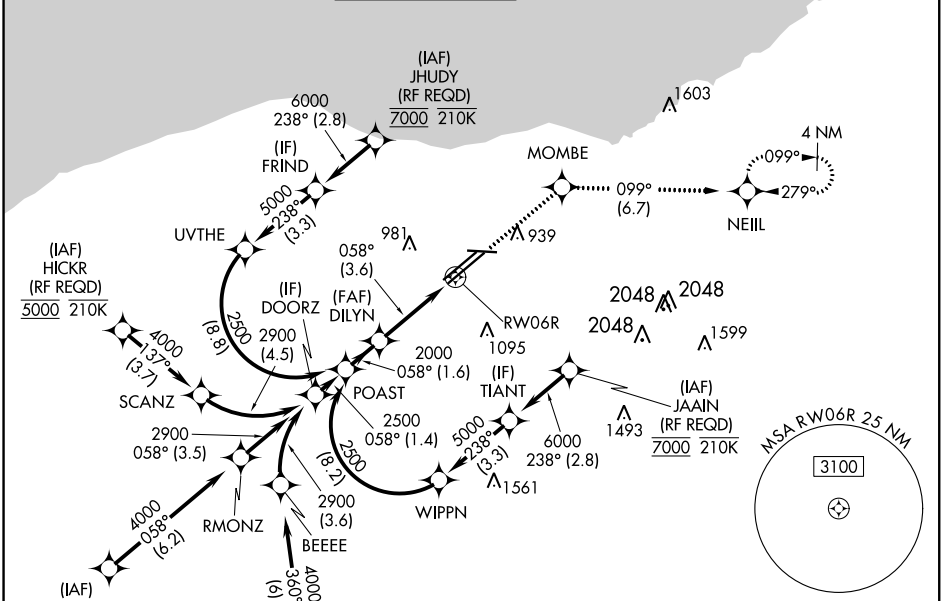


APP CRS	Rwy Idg	8029
058°	TDZE	777
	Apt Elev	799

RNAV (RNP) Z RWY 6R

CLEVELAND-HOPKINS INTL (CLE)

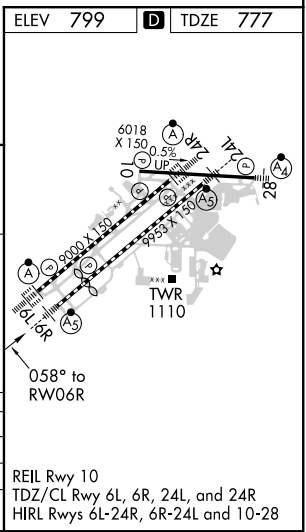
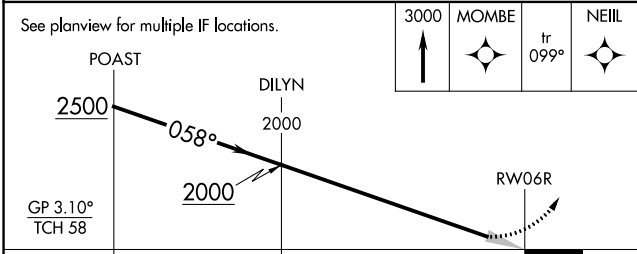
RNP AR APCH.		MALSR		MISSED APPROACH: Climb to 3000 direct MOMBE and on track 099° to NEILL and hold. * Missed approach requires minimum climb of 270 feet per NM to 1400.	
<p>▼ For uncompensated Baro-VNAV systems, procedure NA below -18°C (0°F) or above 46°C (114°F). For inop ALS, increase RNP 0.15 all Cots visibility to RVR 5500.</p>					
D-ATIS	CLEVELAND APP CON	CLEVELAND TOWER	GND CON	CLNC DEL	CPDLC
ARR 127.85 DEP 132.375	124.0 346.325	124.5 273.45	121.7 273.45	125.05 273.45	



EC-2, 25 MAR 2021 to 22 APR 2021

EC-2, 25 MAR 2021 to 22 APR 2021

ELEV 799	D TDZE 777
----------	-------------------



CATEGORY	A	B	C	D
RNP 0.15 DA*		1127/30	350 (400- ⁵ / ₈)	
RNP 0.30 DA		1229/45	452 (500- ⁷ / ₈)	

AUTHORIZATION REQUIRED

REIL Rwy 10
TDZ/CL Rwy 6L, 6R, 24L, and 24R
HIRL Rwy 6L-24R, 6R-24L and 10-28