

# RNAV (RNP) Z RWY 6L

CLEVELAND-HOPKINS INTL (CLE)

APP CRS <b>058°</b>	Rwy Idg <b>9000</b>
	TDZE <b>773</b>
	Apt Elev <b>799</b>

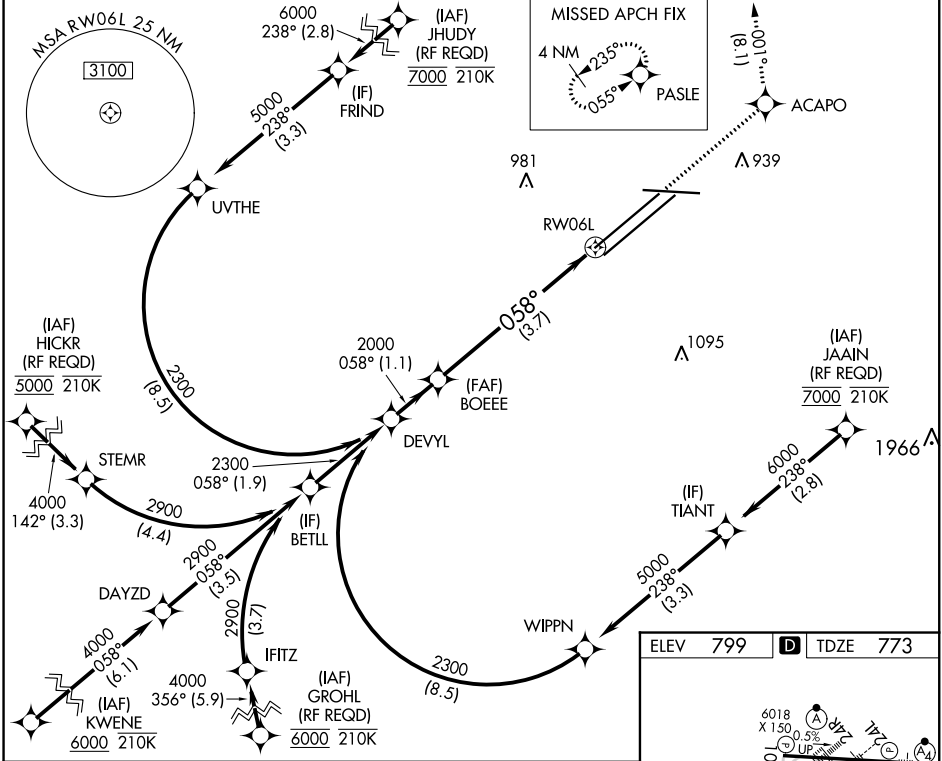
RNP AR APCH.

**▼** For uncompensated Baro-VNAV systems, procedure NA below -18°C (0°F) or above 54°C (130°F). For inop ALS, increase RNP 0.17 all Cats visibility to RVR 5500 and RNP 0.30 all Cats visibility to RVR 6000.

ALSIF-2

**MISSED APPROACH:** Climb to 3000 direct ACAPO and on track 001° to PASLE and hold.

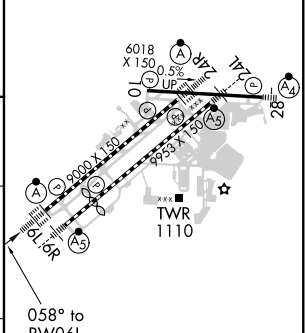
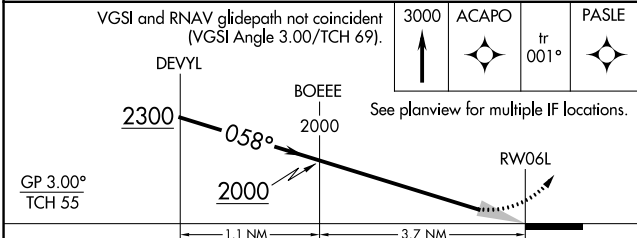
D-ATIS ARR <b>127.85</b> DEP <b>132.375</b>	CLEVELAND APP CON <b>124.0 346.325</b>	CLEVELAND TOWER <b>124.5 273.45</b>	GND CON <b>121.7 273.45</b>	CLNC DEL <b>125.05 273.45</b>	CPDLC
---	---	--	--------------------------------	----------------------------------	-------



EC-2, 25 MAR 2021 to 22 APR 2021

EC-2, 25 MAR 2021 to 22 APR 2021

ELEV 799	<b>D</b> TDZE 773
----------	-------------------



CATEGORY	A	B	C	D
RNP 0.17 DA		1123/30	350 (400- <sup>3</sup> / <sub>4</sub> )	
RNP 0.30 DA		1176/40	403 (400- <sup>3</sup> / <sub>4</sub> )	

## AUTHORIZATION REQUIRED

REIL Rwy 10  
TDZ/CL Rwy 6L, 6R, 24L, and 24R  
HIRL Rwy 6L-24R, 6R-24L and 10-28