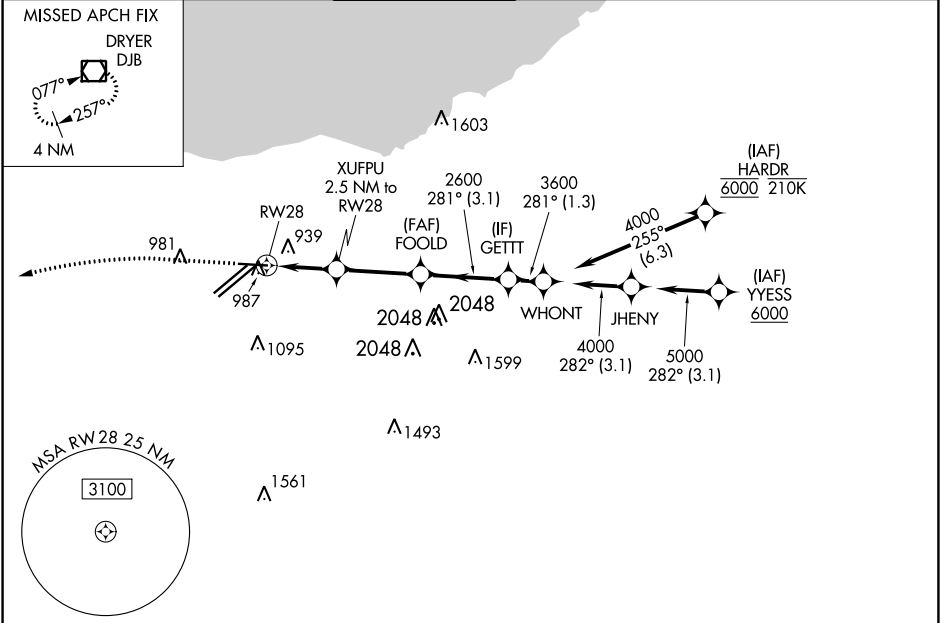


WAAS CH 40109 W28A	APP CRS 281°	Rwy Idg TDZE 799 Apt Elev 799	6018
--	------------------------	---	-------------

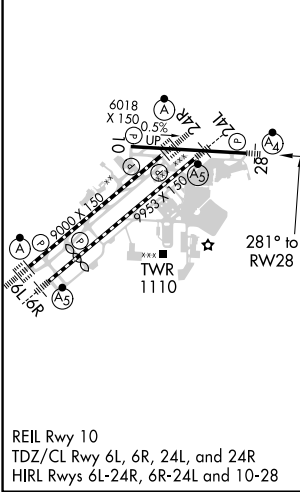
RNAV (GPS) RWY 28

CLEVELAND-HOPKINS INTL (CLE)

RNP APCH. For uncompensated Baro-VNAV systems, LNAV/VNAV NA below -18°C (0°F) or above 54°C (130°F). Circling Rwy 10 NA at night. Inop table does not apply to LPV.		MALSF 	MISSED APPROACH: Climb to 1400 then climbing left turn to 3000 direct DJB VOR/DME and hold.		
D-ATIS ARR 127.85 DEP 132.375	CLEVELAND APP CON 124.0 346.325	CLEVELAND TOWER 124.5 273.45	GND CON 121.7 273.45	CLNC DEL 125.05 273.45	CPDLC



ELEV 799	D	TDZE 799
----------	----------	----------



1400 3000 DJB *LNAV only.	XUFPU 2.5 NM to RWY 28 FOOLD 2600 GETT 3600 GP 3.00° TCH 46			
RWY 28 *1.3 NM to RWY 28 *1640	RWY 28 *1.3 NM 1.2 NM 3 NM 3.1 NM			
CATEGORY	A	B	C	D
LPV DA	999/40		200 (200-¾)	
LNAV/VNAV DA	1168/40		369 (400-¾)	
LNAV MDA	1260/40	461 (500-¾)	1260/60	461 (500-1¼)
C CIRCLING	1420-1	621 (700-1)	1420-1¾ 621 (700-1¾)	1420-2 621 (700-2)

EC-2, 25 MAR 2021 to 22 APR 2021

EC-2, 25 MAR 2021 to 22 APR 2021