

LOC/DME I-PVY <b>111.55</b> Chan 52 (Y)	APP CRS <b>238°</b>	Rwy Idg 24R 24L 9000 9956 TDZE 780 786 Apt Elev 799 799
---	------------------------	---

# ILS or LOC RWY 24R

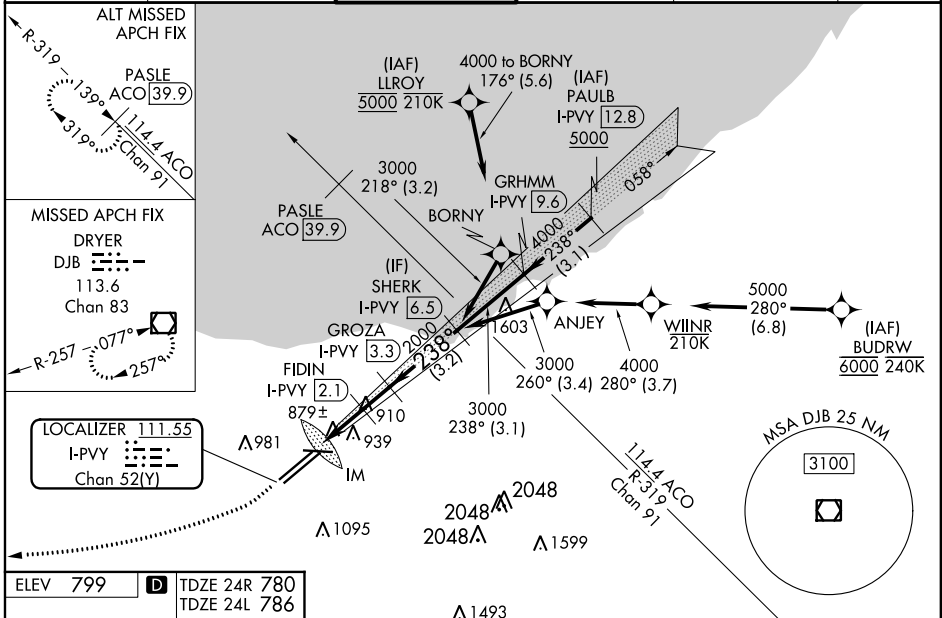
CLEVELAND-HOPKINS INTL (CLE)

DME required. Aircraft not DME/DME/IRU or GPS equipped - RADAR required for procedure entry. RNAV 1. From LLROY and BUDRW: RNAV 1-DME/DME/IRU or GPS required for procedure entry.

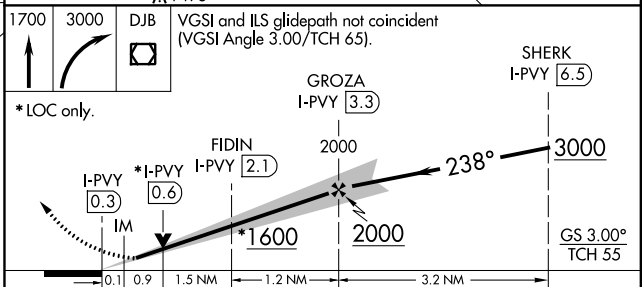
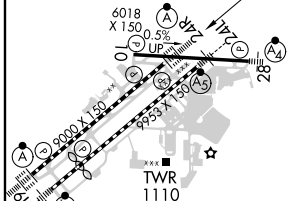
Rwy 24L MALSR 	Rwy 24R ALSF-2 	MISSED APPROACH: Climb to 1700 then climbing right turn to 3000 direct DJB VOR/DME and hold.
----------------------	-----------------------	--

**⚠** Circling Rwy 10 NA at night. Simultaneous approach authorized. Simultaneous operations require use of vertical guidance; maintain last assigned altitude until established on glide slope. Inop table does not apply to sidestep 24L. For inop ALS, increase S-LOC 24R Cats C/D visibility to RVR 5500.

D-ATIS ARR <b>127.85</b> DEP <b>132.375</b>	CLEVELAND APP CON <b>124.0 346.325</b>	CLEVELAND TOWER <b>124.5 273.45</b>	GND CON <b>121.7 273.45</b>	CLNC DEL <b>125.05 273.45</b>	CPDLC
---	---	--	--------------------------------	----------------------------------	-------



ELEV 799	<b>D</b> TDZE 24R 780 TDZE 24L 786
----------	---------------------------------------



CATEGORY	A	B	C	D
S-ILS 24R	980/18		200 (200-½)	
S-LOC 24R	1140/24	360 (400-½)	1140/30	360 (400-¾)
SIDESTEP 24L	1280/55	494 (500-1)	1280-1½ 494 (500-1½)	1280-2 494 (500-2)
<b>C</b> CIRCLING	1420-1	621 (700-1)	1420-1¾ 621 (700-1¾)	1420-2 621 (700-2)

REIL Rwy 10  
TDZ/CL Rwy 6L, 6R, 24L and 24R  
HIRL Rws 6L-24R, 6R-24L and 10-28

EC-2, 25 MAR 2021 to 22 APR 2021

EC-2, 25 MAR 2021 to 22 APR 2021